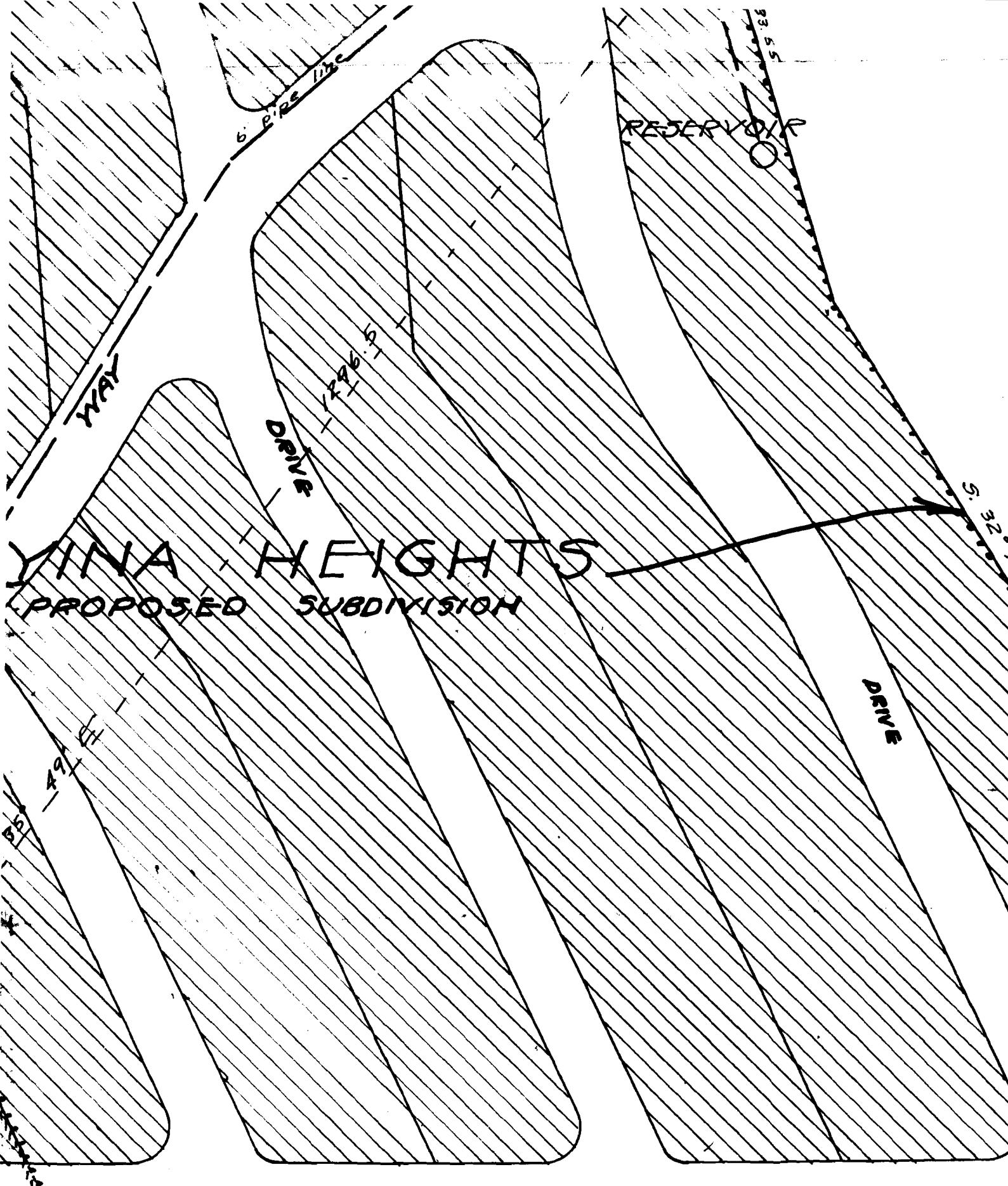


APPLICATION NO. G-470
PERMIT NO. G-349

PROPOSED DOMESTIC WATER SYSTEM IN MOYINA A PLATTED SUBDIVISION IN KLAMATH CO., ORE.		
SURVEYED FOR	MOYINA HEIGHTS CO.	
SURVEYED BY	FRANK Z. HOWARD	1956
DRAWN BY	FZH	6/56
SCALE	1" = 100'	

6-349



**YINA HEIGHTS
PROPOSED SUBDIVISION**

RESERVOIR

DRIVE

DRIVE

WAY.

N. 89° 42' E.

1301.5

6" PIPE

1226.10

5.32.13

93.55

49.1 E

85.1

SUNSET

WELL

RESERVOIR

PIPE LINE

DRIVE

HEIGHTS
SUBDIVISION

DRIVE

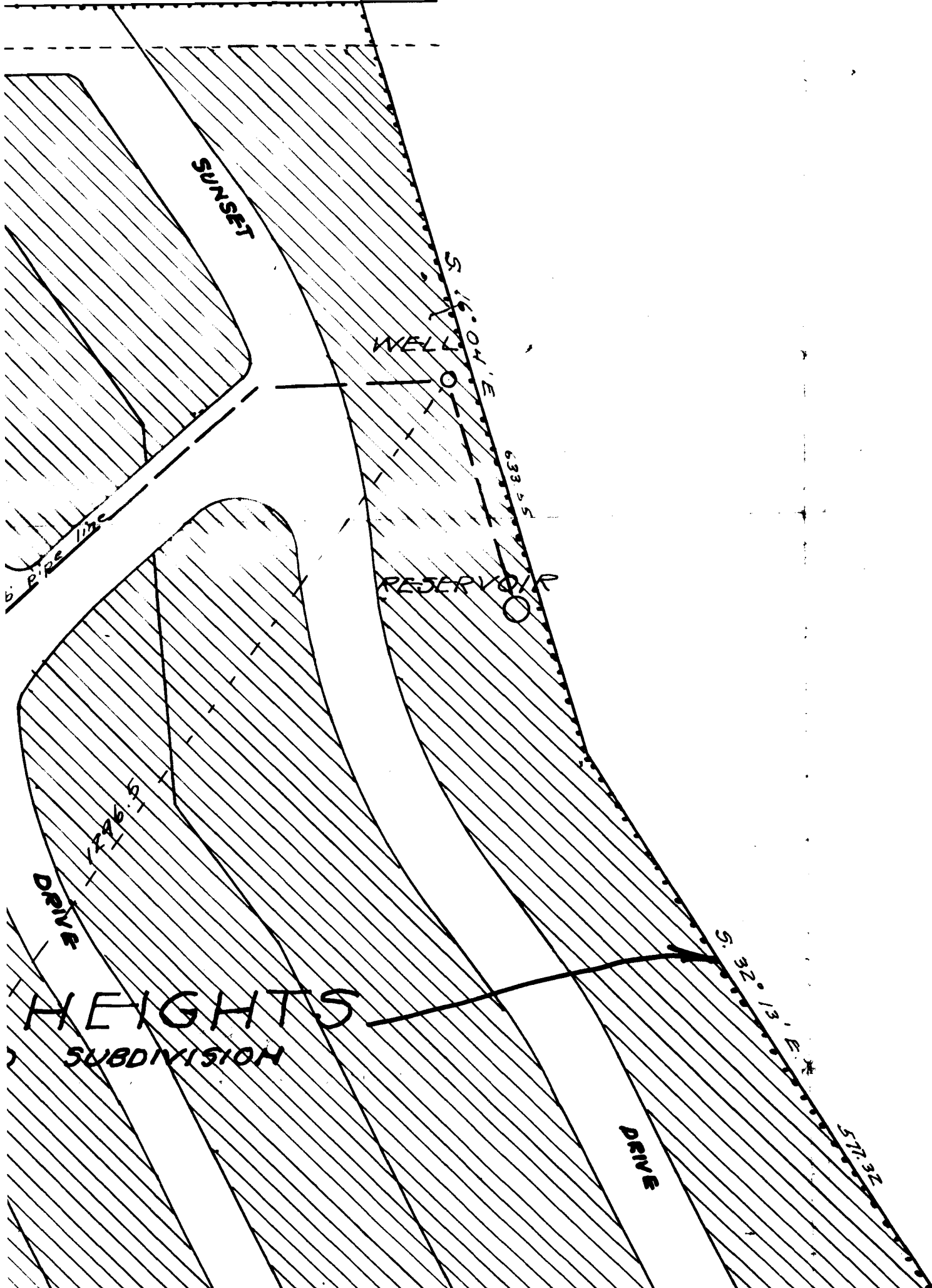
S. 16.04' E

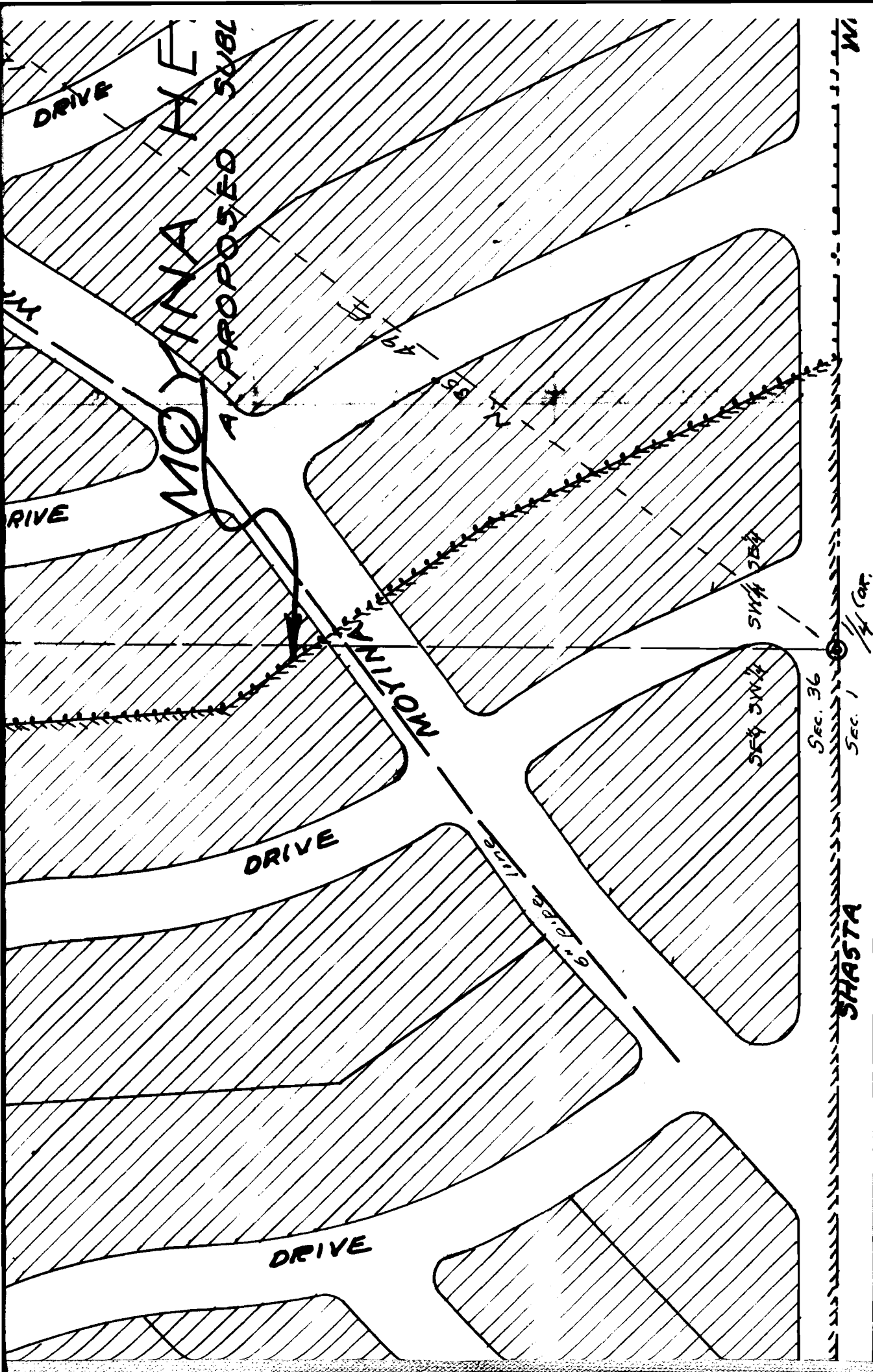
633.25

S. 32.13' E

571.32

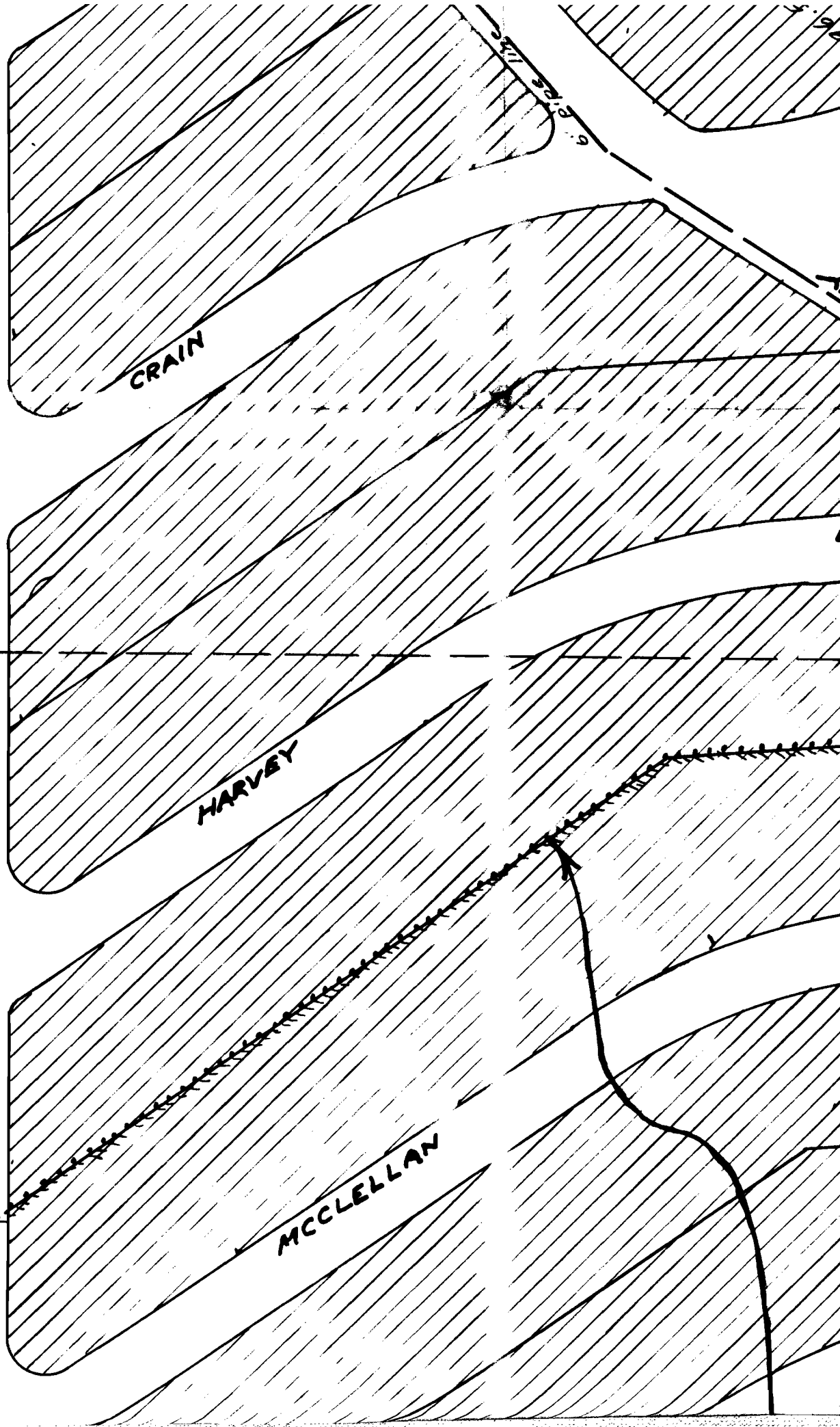
1226.50





N 89° 59' 1/2" E 2039.6

AVE



CRAIN

HARVEY

MCCLELLAN

9.872/2/17/20

EBERLENA

N 89° 59' E

MCCLELLAN

CARLSON

MOYINIA

A PLATTED SUBDIVISION

CHERRY WAY

SAGE WAY

SAGE WAY

1336

N. 91.0

PATTERSON

T. 38 S., R. 9 E., W.M.

Sacs. 1, 2, 35 & 36

51 E 1/4 W.M.

ST

N. 89° 55' E

339.8

