

LOT
LOT 9

To 1/4 Corner on N. Bdy
Sec. 32, T38S, R9E, W.M.

LOT 5
LOT 8

3000

Application No. G-861
Permit No. G-756

500

STATE ENGINEER
SALE, OREGON

H ST.
rhville

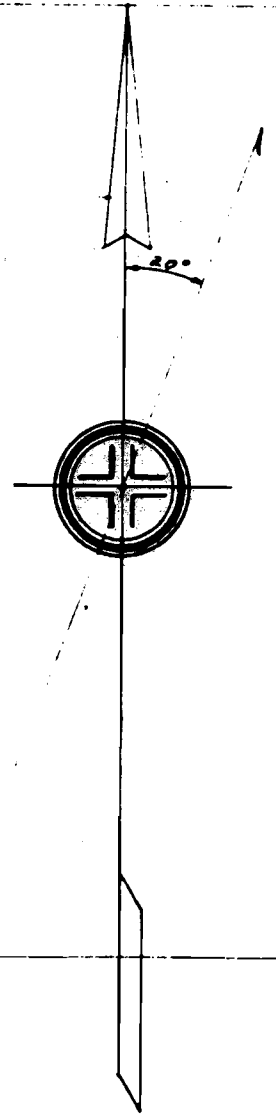
4				THE C.O.P. Co's PROPERTY ON CONGER AVE. KLAMATH FALLS				
3			THE CALIFORNIA OREGON POWER COMPANY					
2			DRAWN BY W.R. CHECKED BY TRACED BY W.R. APPROVED BY					
1	PLATTED - NURSE GARDEN TRACT TERWILLIGER TRACT AND SPOUS TRACT. ADDED BEARINGS AND DISTANCES. INSERT OF SEC 32, T38S, R9E, W.M.	5-5-25 <i>[Signature]</i>	DATE 5-5-25	DWG. LIST NO. C-2778	SCALE 100' to 1" 1000' to 1"	F-369		
	DESCRIPTION OF CHANGE	CHECKED	APPROVED					

Abstracts
? & 8004.

Line
Naum Plat

Center Line of

2000



To $\frac{1}{4}$ Corner N. B'dy
Sec. 32, T38S, R9E, W.M.

2500

A

1500

185

61.85' N 32° 14' W 201.1'

Mills Water Co Ditch

Water rights purchased in 1946 on J.C.K. 4417 from Geo C & Minnie L. Ulrich.

5.71° 50' W 225'

Monument established Klamath Falls City Ordinance No 139 Lat. N. 1769.2 Dep. E 1898.6 To 1/4 Corner on N. B'dy Sec. 32 T.38S, R.9E, W.M.

Water rights purchased from Howard & Maybell E. Bornhise on J.C.K. 4639-1947 Release recorded Vol. 206, Page 429, Klam. Co Records.

250' 44' W

S 48° 28' W 79.3'

Corner

Portion of parcel N-63 (Leavitt Tract) sold to Howard & Maybell Bornhise on J.C.K. 4638 1947

2000



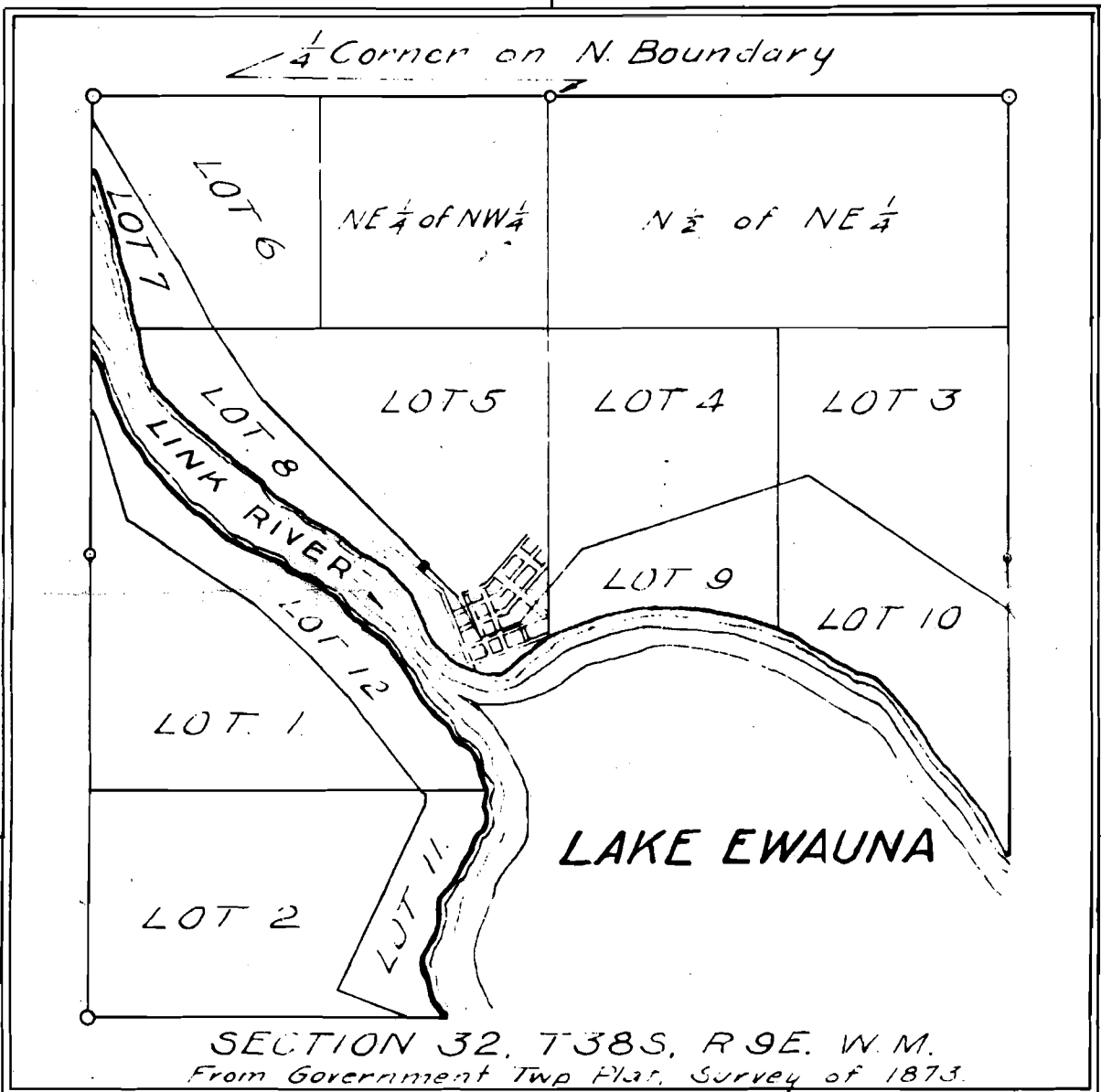
To 1/4 Corner on Sec 32 T.38S R.9E, W.M.

Deed of Mills to Terr

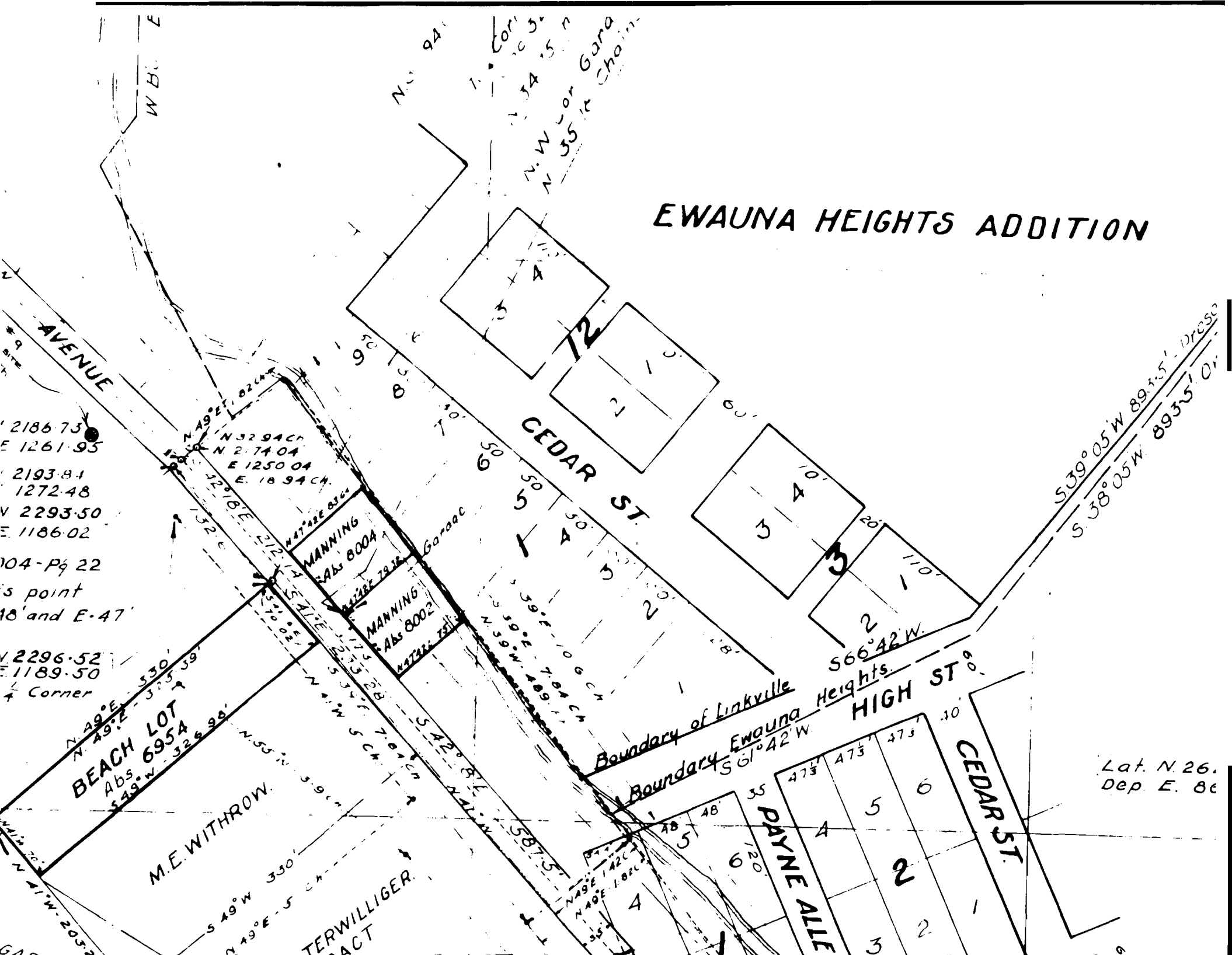
DESCRIPTION IN
Error in closure of

2500

3000



EWAUNA HEIGHTS ADDITION



AVENUE

CEDAR ST

HIGH ST

CEDAR ST

PAYNE ALLE

M.E. WITHROW

TERWILLIGER TRACT

Boundary of Linkville Heights

Boundary Ewauna Heights

2186.73
E 1261.95
2193.81
1272.48
N 2293.50
E 1186.02

04-Pg 22
is point
18' and E-47'

2296.52
E 1189.50
Corner

BEACH LOT
Abs 6954
S 49° W 328.98'

MANNING
Abs 8004
N 47° 22' E 83.64'

MANNING
Abs 8002
N 47° 22' E 73.12'

Lat. N. 26.
Dep. E. 86

S 39° 05' W 897.51' - Drive
S 38° 05' W 893.51' 01'

N 49° E 330'
N 49° E 375.39'
S 49° W 330'
N 55° W 319.14'

N 49° E 330'
S 49° W 330'
N 49° E 330'

GAS

N 94'

N 34° 55' W
N 55° W or 6000
55' Chain

Cor
10 35'

10 35'

10 35'

10 35'

10 35'

10 35'

10 35'

10 35'

10 35'

10 35'

10 35'

10 35'

10 35'

10 35'

10 35'

10 35'

10 35'

10 35'

10 35'

10 35'

10 35'

10 35'

10 35'

10 35'

10 35'

10 35'

10 35'

10 35'

10 35'

10 35'

10 35'

10 35'

10 35'

10 35'

10 35'

10 35'

10 35'

10 35'

10 35'

10 35'

10 35'

10 35'

10 35'

10 35'

10 35'

10 35'

10 35'

10 35'

10 35'

10 35'

10 35'

10 35'

10 35'

10 35'

10 35'

10 35'

10 35'

10 35'

10 35'

10 35'

10 35'

10 35'

10 35'

10 35'

10 35'

10 35'

10 35'

10 35'

10 35'

10 35'

10 35'

10 35'

10 35'

10 35'

10 35'

10 35'

10 35'

10 35'

10 35'

10 35'

10 35'

10 35'

10 35'

10 35'

10 35'

10 35'

10 35'

10 35'

10 35'

10 35'

10 35'

10 35'

10 35'

10 35'

10 35'

10 35'

10 35'

10 35'

10 35'

10 35'

10 35'

10 35'

10 35'

10 35'

10 35'

10 35'

10 35'

10 35'

10 35'

10 35'

10 35'

10 35'

10 35'

10 35'

10 35'

10 35'

10 35'

10 35'

10 35'

10 35'

10 35'

10 35'

10 35'

10 35'

10 35'

10 35'

10 35'

10 35'

10 35'

10 35'

10 35'

10 35'

10 35'

10 35'

10 35'

10 35'

10 35'

10 35'

10 35'

10 35'

10 35'

10 35'

10 35'

10 35'

10 35'

10 35'

10 35'

10 35'

10 35'

10 35'

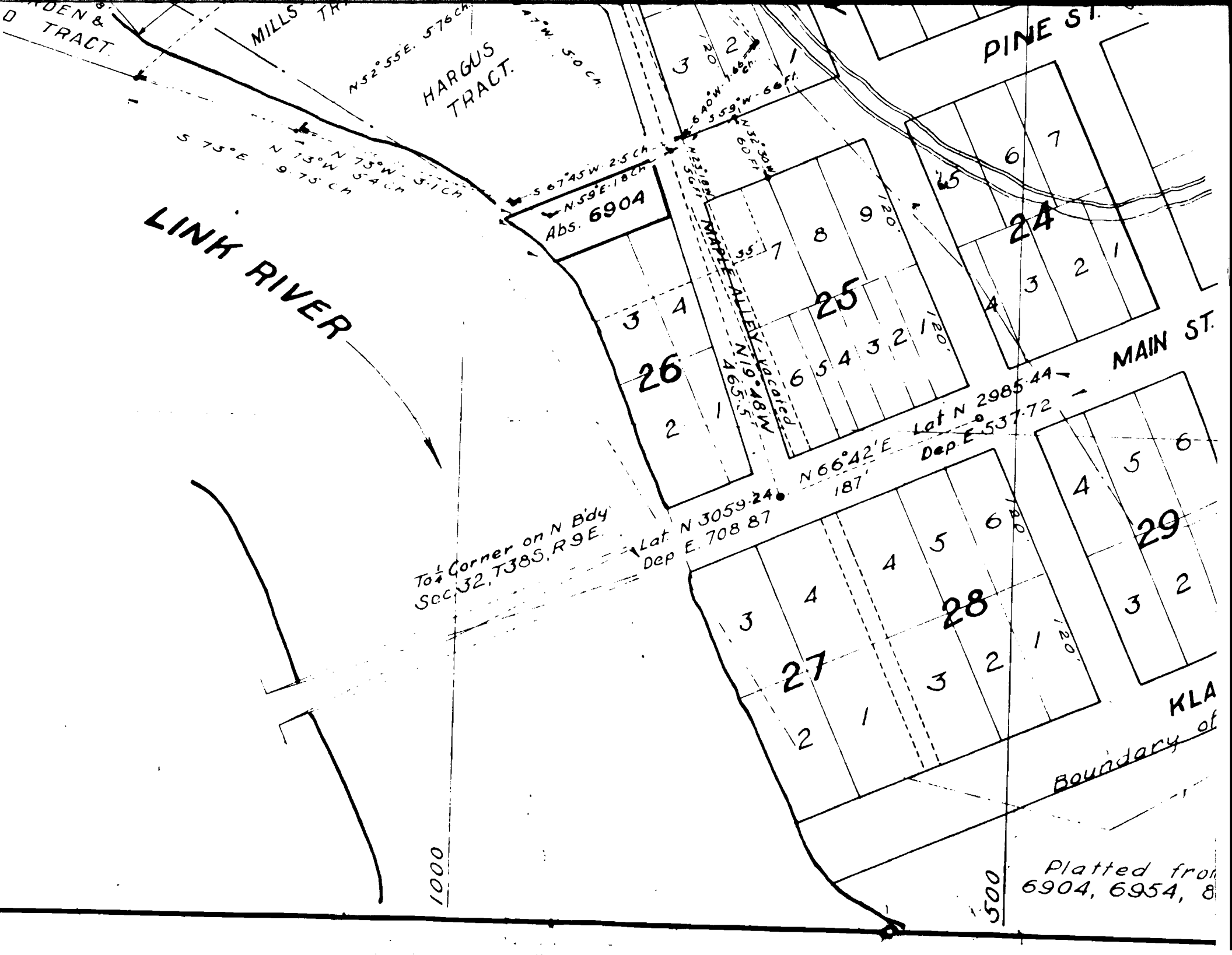
10 35'

10 35'

10 35'

10 35'

10 35'



RDEN & TRACT.

MILLS TRACT.

HARGUS TRACT.

PINE ST.

LINK RIVER

Abs. 6904

26

25

24

MAIN ST.

29

28

27

KLA

Boundary of

To 1/4 Corner on N Bdy
Sec. 32, T38S, R9E.

Lat. N 3059.24
Dep. E. 708.87

Lat. N 2985.44
Dep. E. 537.72

Platted from
6904, 6954, 8

1000

500

S 73° E 19.75 CH
N 73° W 54 CH
N 73° W 51 CH

N 52° 55' E. 576 CH

N 7° W 50 CH

N 69° 00' W 166 CH
N 55° 59' W 66 FT.

S 67° 45' W 25 CH
N 59° E 18 CH

N 53° 18' W 187 CH
N 52° 30' W 60 FT.

MAPLE ALLEY
N 19° 48' W 46.55 CH

N 66° 42' E 187

120'

120'

120'

120'

120'

120'

3 4

2 1

6 5 4 3 2 1

3 4

2 1

3 2 1

4 5 6

3 2 1

4 5 6

3 2 1

4 5 6

3 2 1

4 5 6

3 2 1

4 5 6

3 2 1

4 5 6

3 2 1

3 4

2 1

6 5 4 3 2 1

7 8 9

3 4

2 1

6 5 4 3 2 1

7 8 9

3 4

2 1

6 5 4 3 2 1

7 8 9

3 4

2 1

6 5 4 3 2 1

7 8 9

3 4

2 1

6 5 4 3 2 1

7 8 9

3 4

2 1

6 5 4 3 2 1

7 8 9

3 4

2 1

6 5 4 3 2 1

7 8 9

3 4

2 1

6 5 4 3 2 1

7 8 9

3 4

2 1

6 5 4 3 2 1

7 8 9