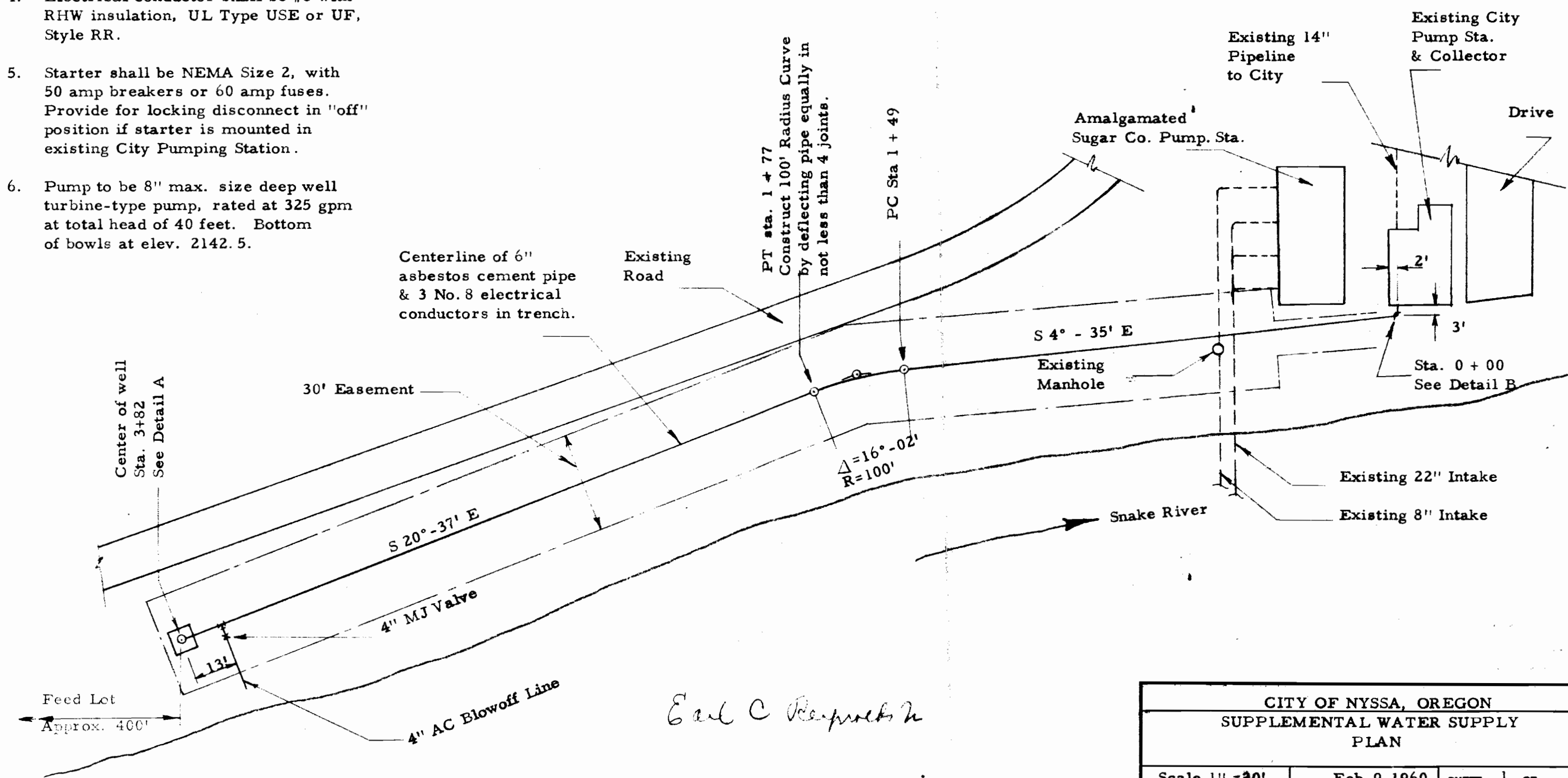
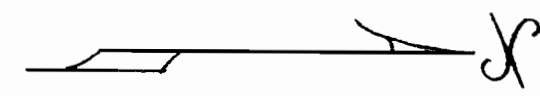


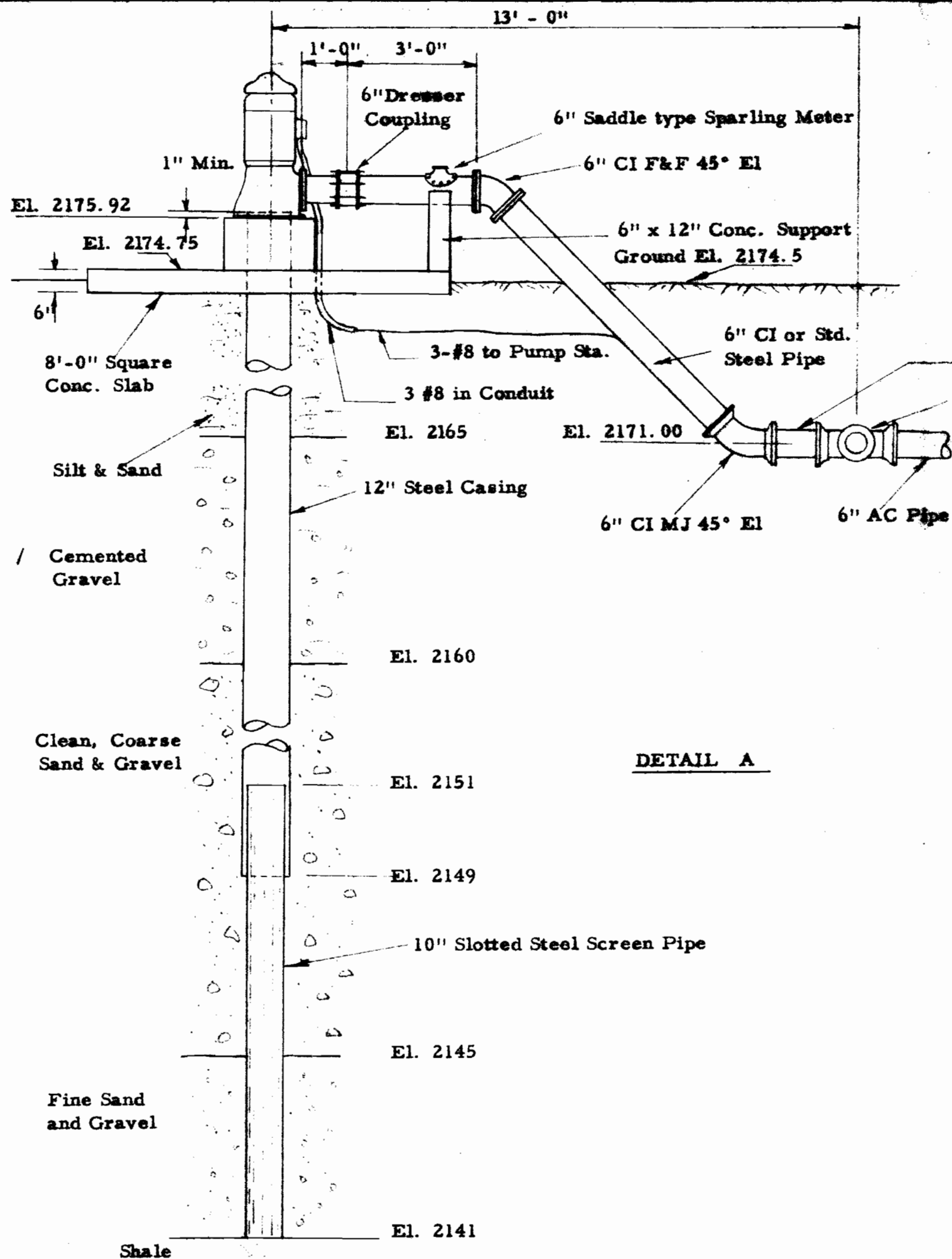
Notes:

1. Construct pipeline to uniform grade, draining to low point at blow off.
2. Minimum cover over pipe 2' - 0"
3. Construct blow off at elevation 2170 or higher.
4. Electrical conductor shall be #8 with RHW insulation, UL Type USE or UF, Style RR.
5. Starter shall be NEMA Size 2, with 50 amp breakers or 60 amp fuses. Provide for locking disconnect in "off" position if starter is mounted in existing City Pumping Station.
6. Pump to be 8" max. size deep well turbine-type pump, rated at 325 gpm at total head of 40 feet. Bottom of bowls at elev. 2142.5.

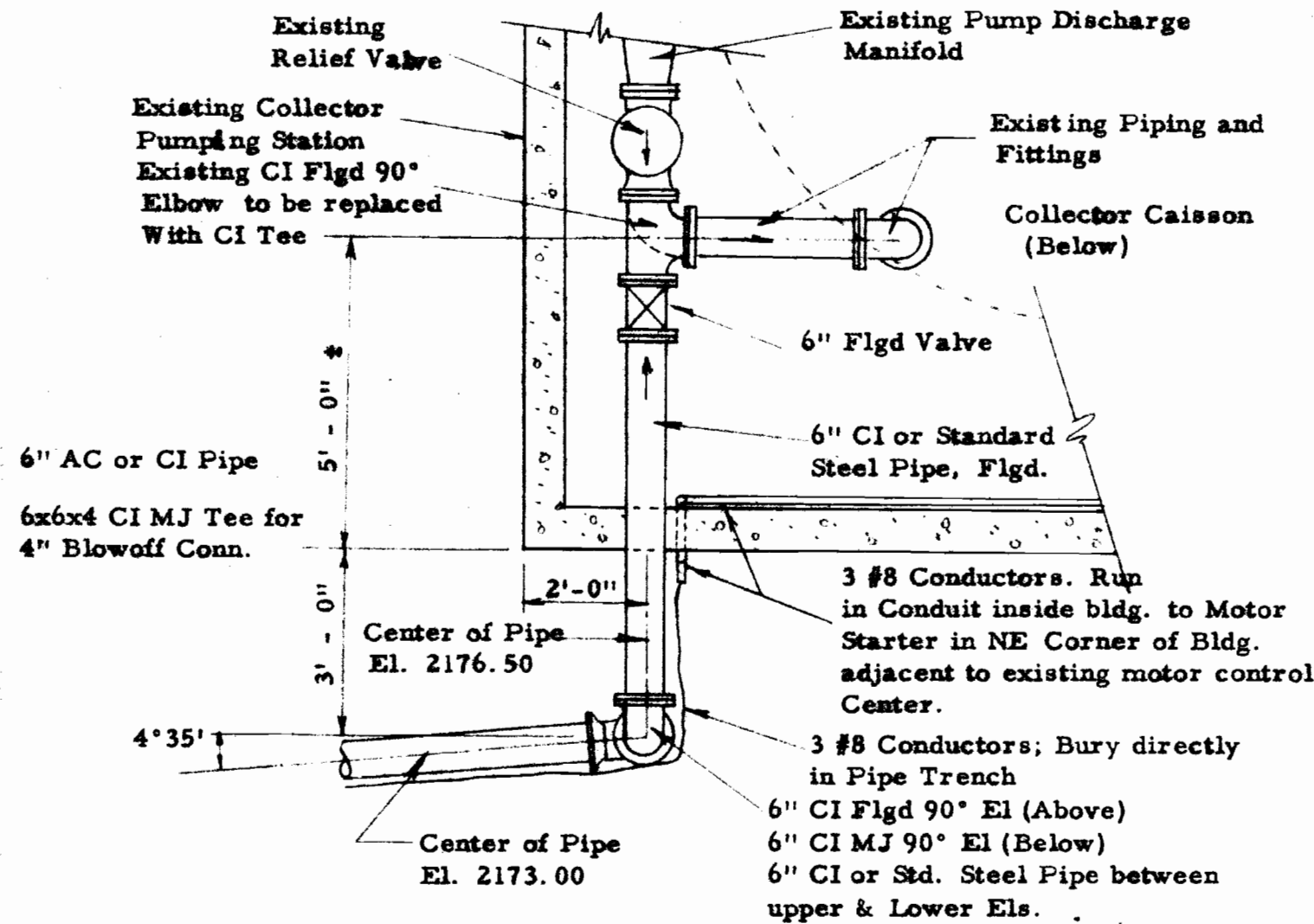


Earl C. Reynolds

| | | |
|--------------------------------|---|--------------------------|
| CITY OF NYSSA, OREGON | | |
| SUPPLEMENTAL WATER SUPPLY PLAN | | |
| Scale 1" = 20' | Feb. 9, 1960 | SHEET 1 of 2 |
| <i>CER</i> | CORNELL, HOWLAND, HAYES & MERRYFIELD CORVALLIS, OREGON | E 1835-1 BOISE, IDAHO |



DETAIL A



DETAIL B

Earl C Reynolds

| | | |
|---------------------------|---|-----------------------|
| CITY OF NYSSA, OREGON | | |
| SUPPLEMENTAL WATER SUPPLY | | |
| Scale: 3/8" = 1'-0" | Feb. 9, 1960 | SHEET 2 of 2 |
| <i>Earl C Reynolds</i> | CORNELL, HOWLAND, HAYES & MERRYFIELD CORVALLIS, OREGON | BOISE, IDAHO E-1835-1 |