

STA 2180 & DIME

48'

INVERT EL. 1060.25

POND OUTLET
10" CONC. PIPE

POND

HOR. SCALE 1 INCH = 10 FT.
VERT. SCALE 1 INCH = 10 FT.

SURFACE DRAIN
@ STA 2180



CREEK LBR. CO. POND
AT
PHY, ORE.

PIPELINE IN GOV'T LOTS 3,
TRACTS", IN SECTION 19,
7 3/4. R&B SW. WM.
RHINE COUNTY
OREGON

SALES: AS SHOWN

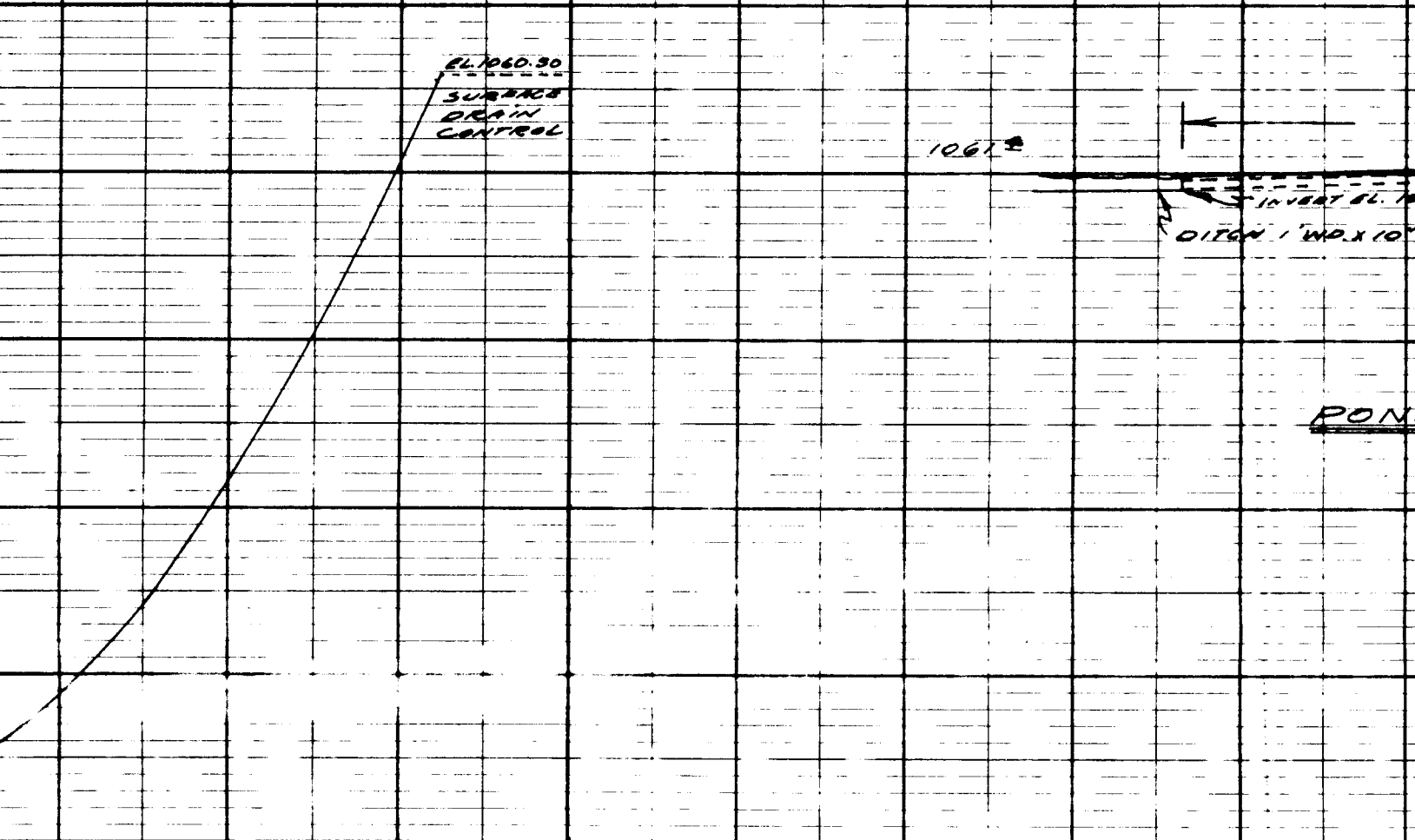
ROBT. M. THOMPSON P.E.

NO.	STRUCTURE NO. 1. 12. 12 CH. 1. 10	DATE
NO. 1	8' W. 12' 10' 10'	BY
NO. 2	GRADES CHECKED	
NO. 3	NOTED	
NO. 4	GRADES CHECKED	
NO. 5	NOTED	
NO. 6	GRADES CHECKED	
NO. 7	NOTED	
NO. 8	GRADES CHECKED	
NO. 9	NOTED	
NO. 10	GRADES CHECKED	
NO. 11	NOTED	
NO. 12	GRADES CHECKED	
NO. 13	NOTED	
NO. 14	GRADES CHECKED	
NO. 15	NOTED	
NO. 16	GRADES CHECKED	
NO. 17	NOTED	
NO. 18	GRADES CHECKED	
NO. 19	NOTED	
NO. 20	GRADES CHECKED	
NO. 21	NOTED	
NO. 22	GRADES CHECKED	
NO. 23	NOTED	
NO. 24	GRADES CHECKED	
NO. 25	NOTED	
NO. 26	GRADES CHECKED	
NO. 27	NOTED	
NO. 28	GRADES CHECKED	
NO. 29	NOTED	
NO. 30	GRADES CHECKED	
NO. 31	NOTED	
NO. 32	GRADES CHECKED	
NO. 33	NOTED	
NO. 34	GRADES CHECKED	
NO. 35	NOTED	
NO. 36	GRADES CHECKED	
NO. 37	NOTED	
NO. 38	GRADES CHECKED	
NO. 39	NOTED	
NO. 40	GRADES CHECKED	
NO. 41	NOTED	
NO. 42	GRADES CHECKED	
NO. 43	NOTED	
NO. 44	GRADES CHECKED	
NO. 45	NOTED	
NO. 46	GRADES CHECKED	
NO. 47	NOTED	
NO. 48	GRADES CHECKED	
NO. 49	NOTED	
NO. 50	GRADES CHECKED	
NO. 51	NOTED	
NO. 52	GRADES CHECKED	
NO. 53	NOTED	
NO. 54	GRADES CHECKED	
NO. 55	NOTED	
NO. 56	GRADES CHECKED	
NO. 57	NOTED	
NO. 58	GRADES CHECKED	
NO. 59	NOTED	
NO. 60	GRADES CHECKED	
NO. 61	NOTED	
NO. 62	GRADES CHECKED	
NO. 63	NOTED	
NO. 64	GRADES CHECKED	
NO. 65	NOTED	
NO. 66	GRADES CHECKED	
NO. 67	NOTED	
NO. 68	GRADES CHECKED	
NO. 69	NOTED	
NO. 70	GRADES CHECKED	
NO. 71	NOTED	
NO. 72	GRADES CHECKED	
NO. 73	NOTED	
NO. 74	GRADES CHECKED	
NO. 75	NOTED	
NO. 76	GRADES CHECKED	
NO. 77	NOTED	
NO. 78	GRADES CHECKED	
NO. 79	NOTED	
NO. 80	GRADES CHECKED	
NO. 81	NOTED	
NO. 82	GRADES CHECKED	
NO. 83	NOTED	
NO. 84	GRADES CHECKED	
NO. 85	NOTED	
NO. 86	GRADES CHECKED	
NO. 87	NOTED	
NO. 88	GRADES CHECKED	
NO. 89	NOTED	
NO. 90	GRADES CHECKED	
NO. 91	NOTED	
NO. 92	GRADES CHECKED	
NO. 93	NOTED	
NO. 94	GRADES CHECKED	
NO. 95	NOTED	
NO. 96	GRADES CHECKED	
NO. 97	NOTED	
NO. 98	GRADES CHECKED	
NO. 99	NOTED	
NO. 100	GRADES CHECKED	

A - CAPACITY CURVE

SURFACE ACRES

849 937 1.08



1056 1058 1060
ELEVATION

EXISTING MURPH
MUR
SHOWING LOC POND AT
4, 5 AND MADRONA
TWP 3
TOS
30
July 31, 1967



DIKE

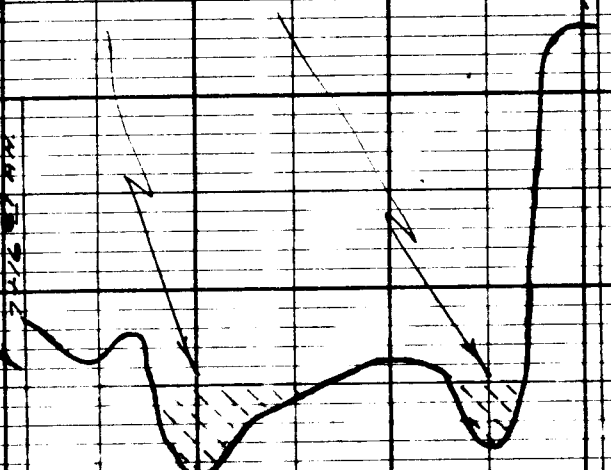
ARE

BM 1208 ORE STATE
HIGHWAY DATUM AT NO.
END APPLIANTS RIVER
BRIDGE. ELEV. 10545

4 291

TO ELEV. 10615

BASE
ELEV. 10500



CUT BY

10500

10500

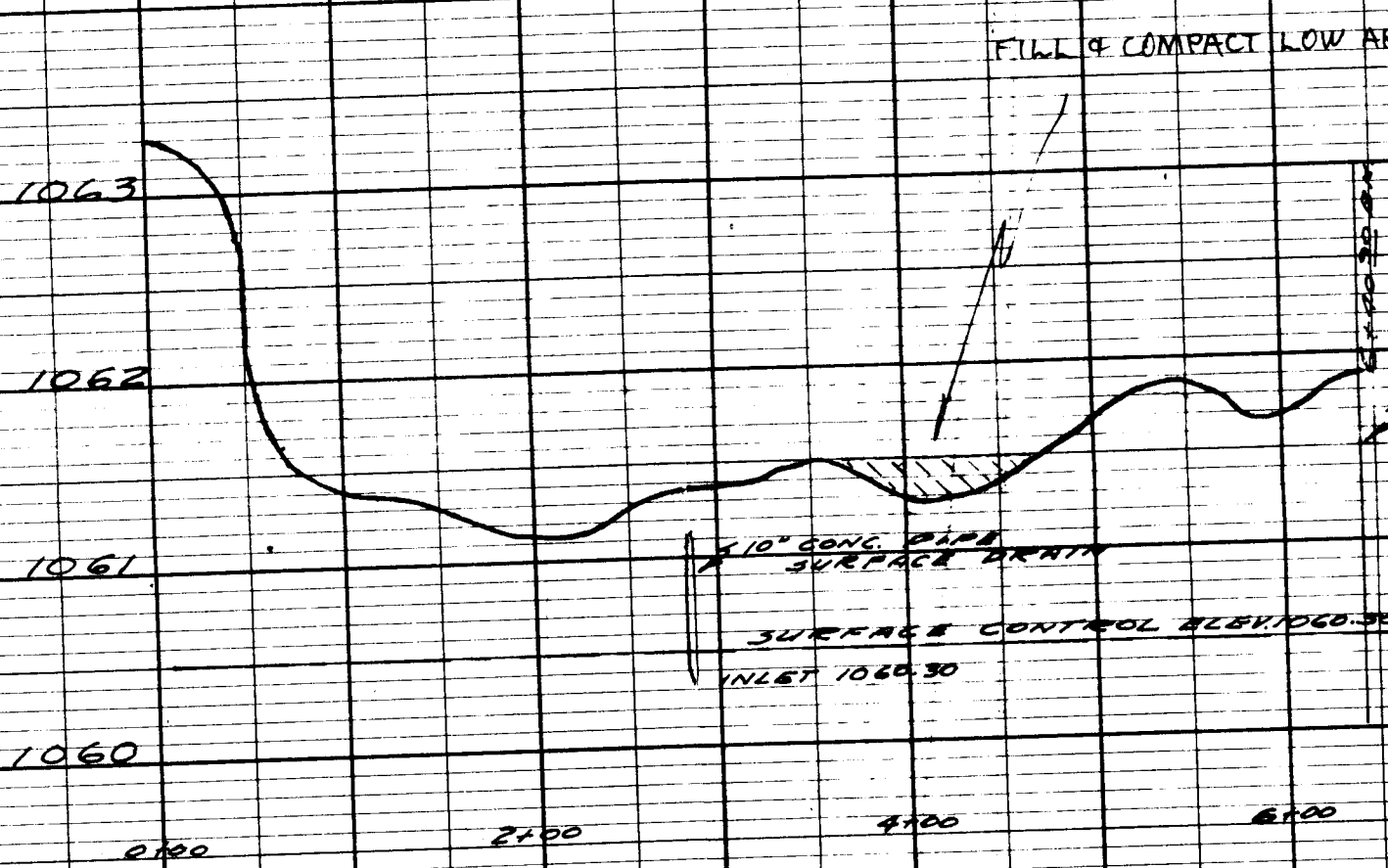
1054

PLAN-PROFILE OF R. E. STANBARD
PAPER MADE AND PRINTED IN U.S.A.
ENGINE DESIGN

PROFILE OF CREST OF EXIST.

HOR. SCALE 1 INCH = 100 FT.

VERT. SCALE 1 INCH = 1 FT.



MURPHY
AC



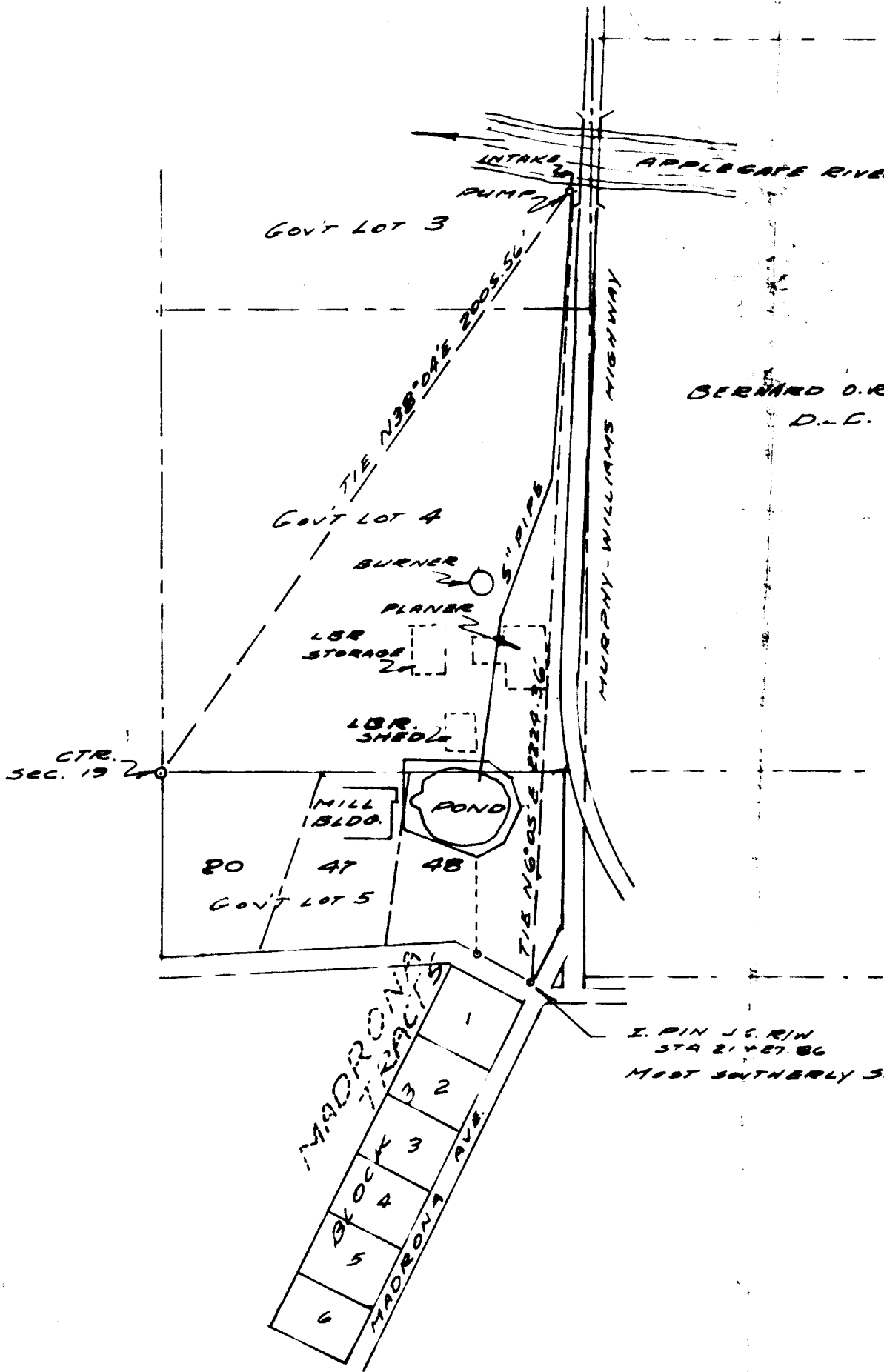
SCALE 1" = 400'

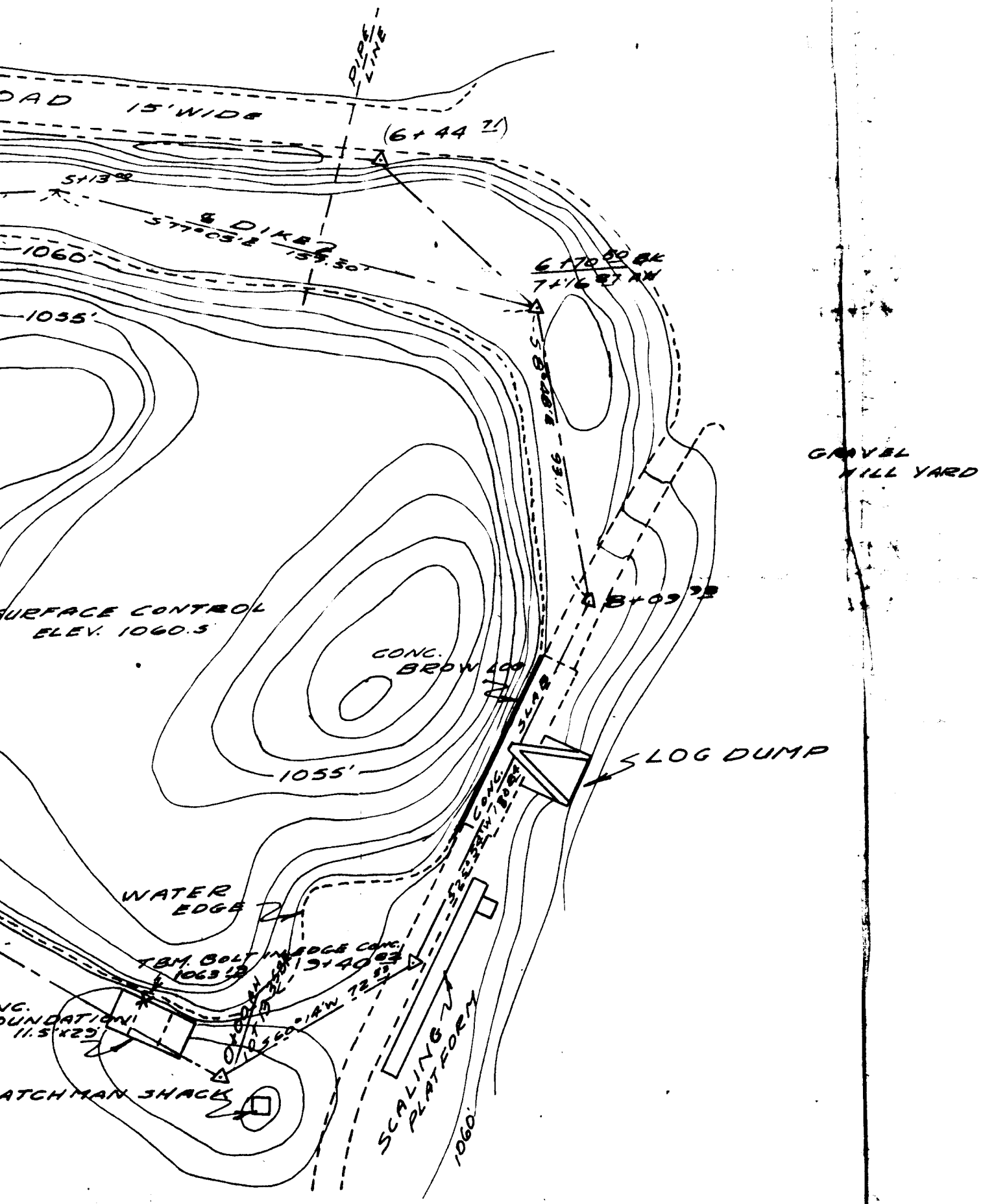
EAST 1/4 COR.
S 366.19
T. 37 S. R. 3 W. W. 4.

E. COR. TRACT 48

15.40.51
17.37.51
18.37.51

NO.	RT. OF WAY CHECKED	BY	DATE
	ALIGNMENT CHECKED		
MOLE BOOK	DATE		
6741	DATE		
	STOLLED		
	SURVEYED		





DAD 15' WIDE

PIPE LINE

(6+44.2)

5+13.8

6 DIKE

5+77.05

1060

1055

6+70.8

7+16.8

GRAVEL MILL YARD

SURFACE CONTROL
ELEV. 1060.5

CONC.
BRON

1055

LOG DUMP

WATER EDGE

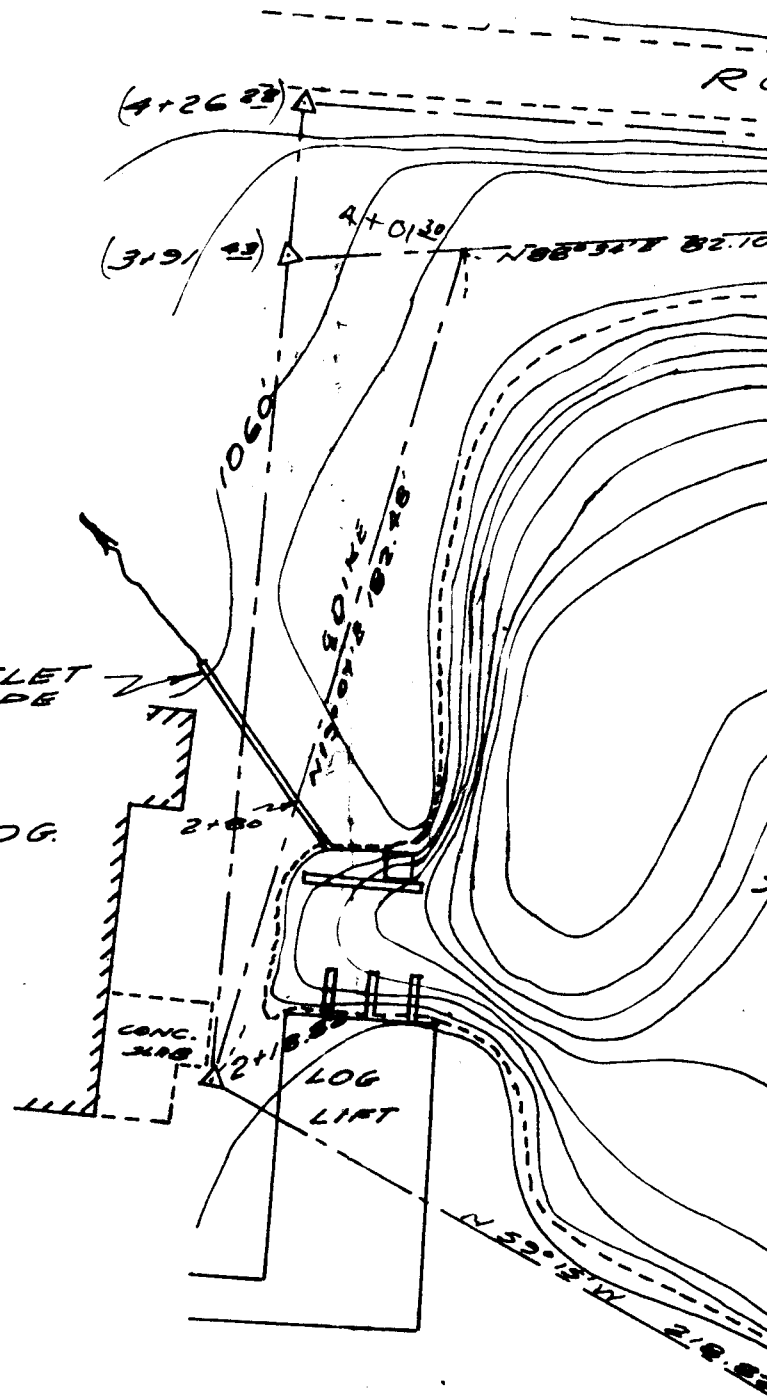
ATCHMAN SHACK

CONC. FOUNDATION
11.5' X 29'

SCALING PLATFORM

1060

ATCHMAN SHACK



POND OUTLET
10" CONG. PIPE

MILL
BLDG.

CONG.
3.00

LOG
LIFT

SCALE 1" = 40'
CONTOUR INTERVAL 1 FT.

5X40

CO
W