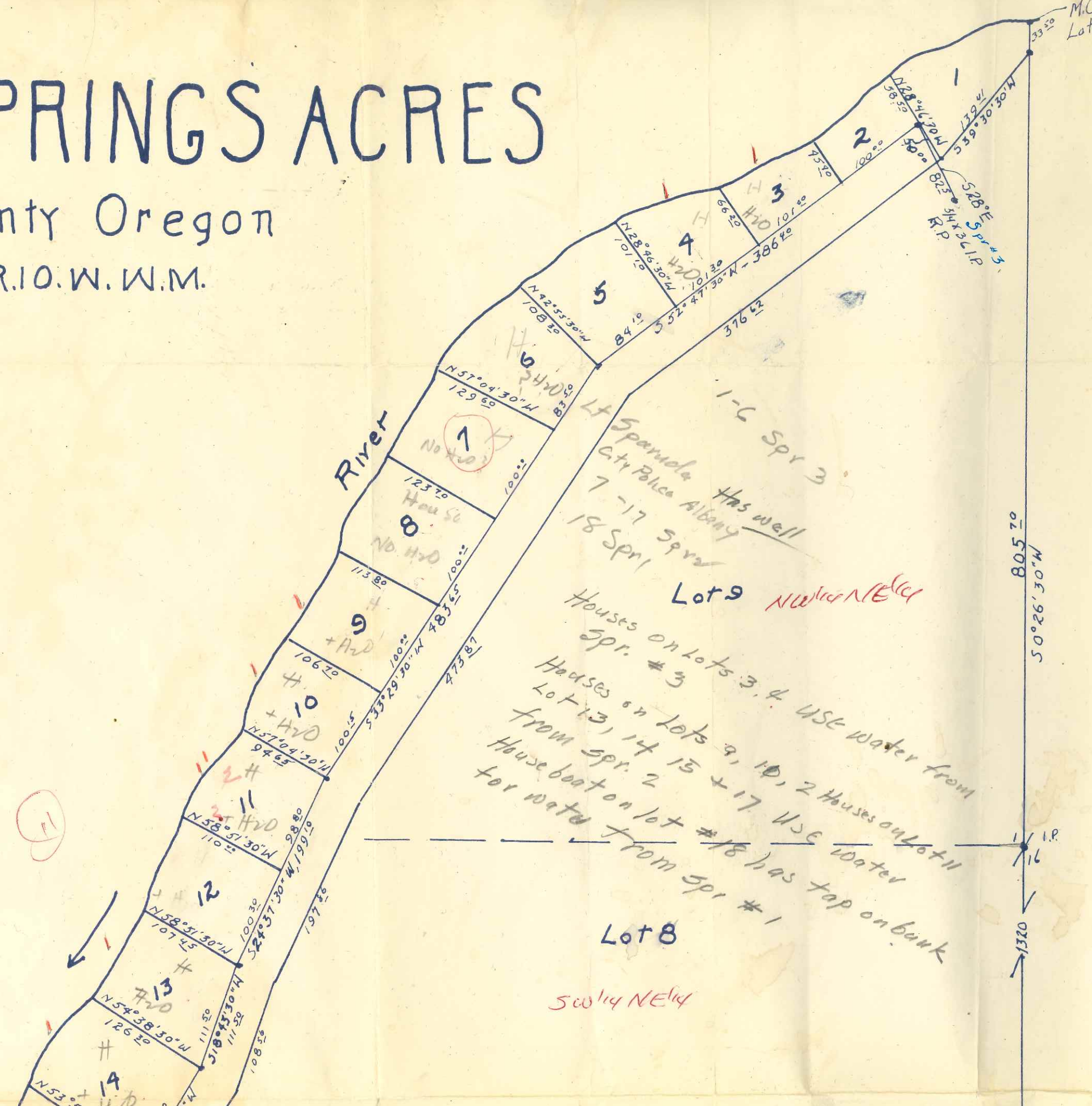


# DER SPRINGS ACRES

olm County Oregon  
32. T.13.S., R.10.W.W.M.

Cert 33080



Lot 9 NW 1/4 NE 1/4  
Houses on lots 3, 4 use water from  
spr. # 3  
Houses on lots 9, 10, 2 Houses on lot 11  
Lot 13, 14 15 + 17 use water  
from spr. 2  
House boat on lot # 18 has tap on bank  
for water from spr # 1

13 Cabins with H2O



(F)

SW 1/4 NE 1/4

200-



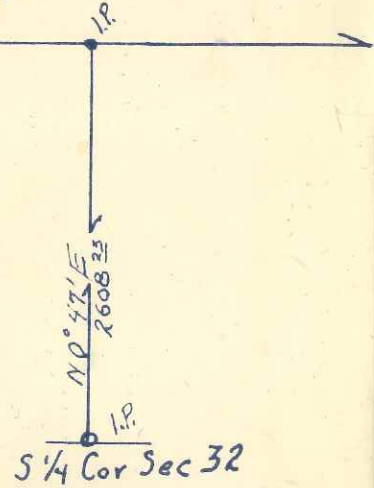
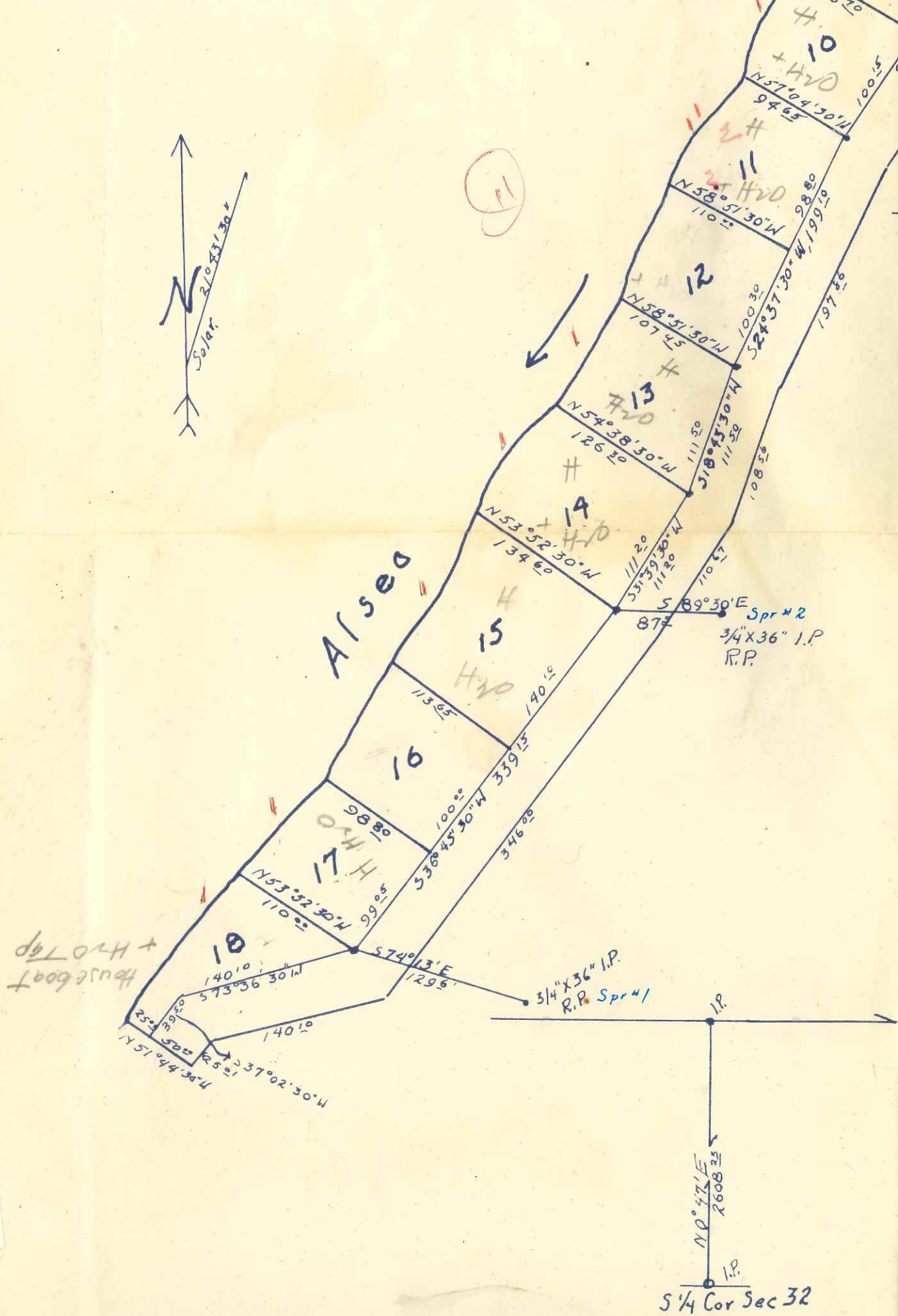


(1)

Houses on lots 9, 10, 2 Houses on Lot 11  
Lot 13, 14, 15 + 17 Use water from  
House boat on lot #18 has tap on bank  
for water from spr #1

Lot 8

SW 1/4 NE 1/4



Application No. 29556  
Permit No. 23284

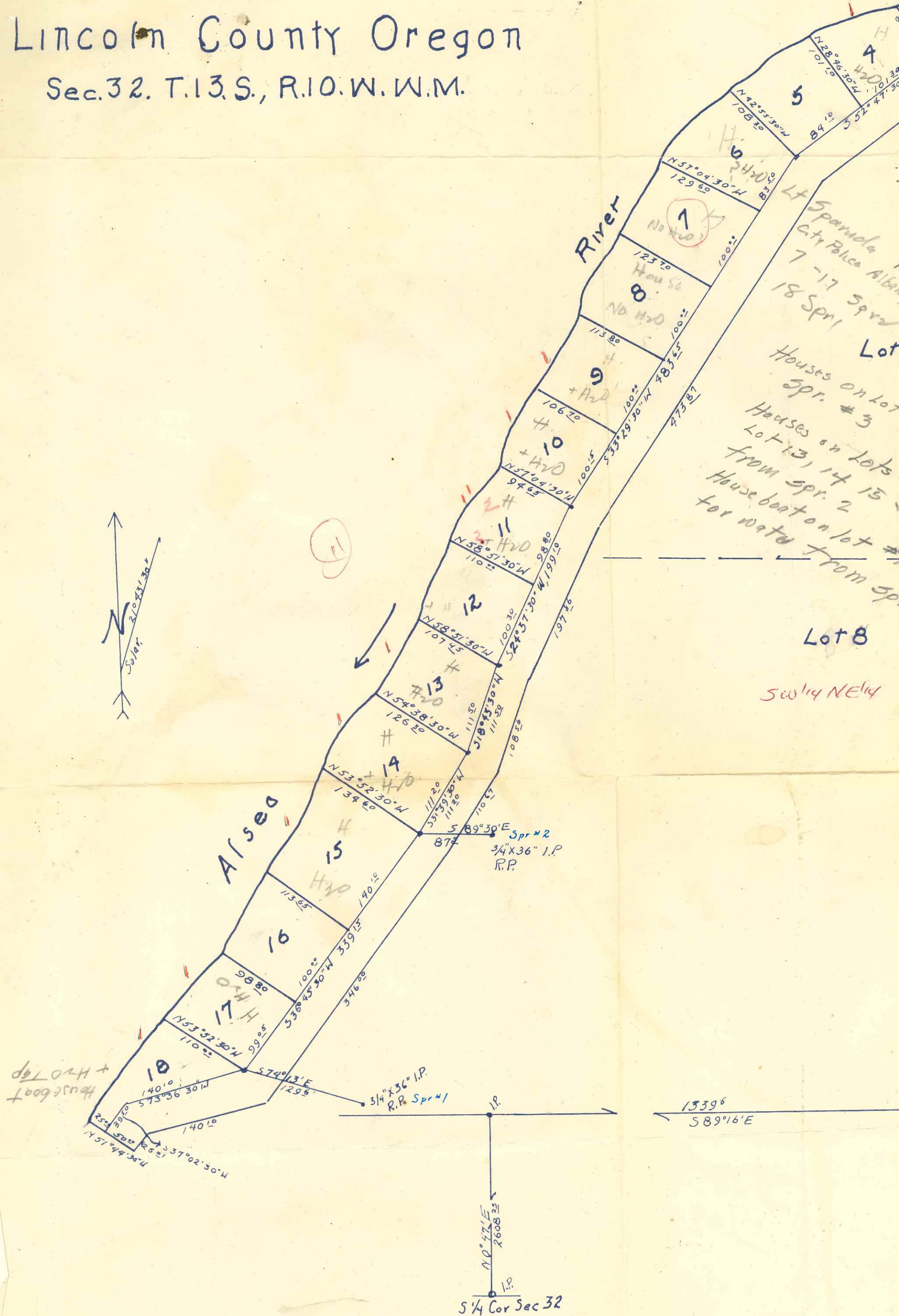
REGISTERED  
OREGON  
LAND SURVEYOR  
*L. Burl Smith*  
OCT 22 1954  
L. BURL SMITH  
336



# ALDER SPRINGS ACRES

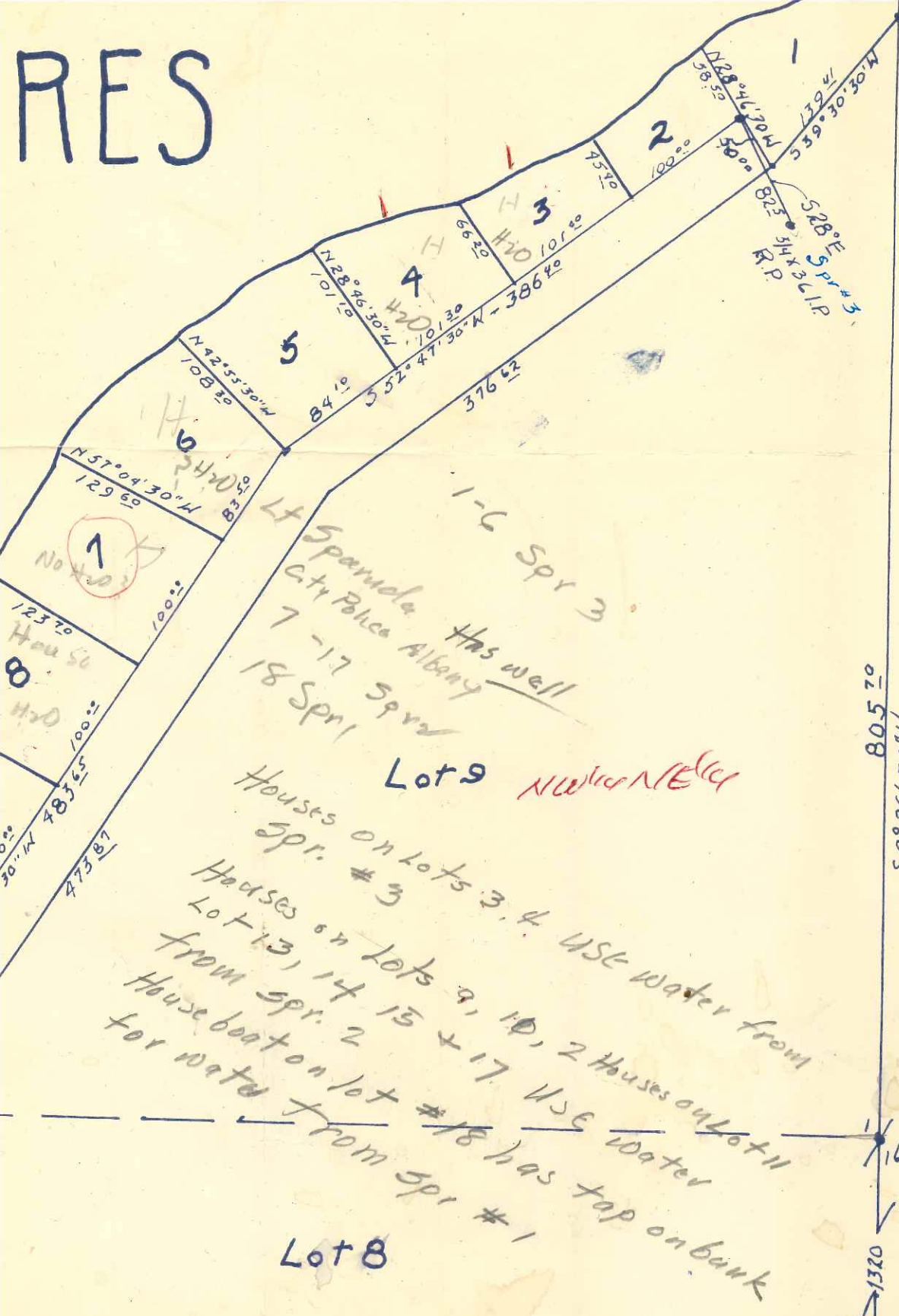
Lincoln County Oregon

Sec. 32. T. 13. S., R. 10. W. W. M.





RES



13 Cabins with H=O

1-6 Spr 3  
 Lt Spaulda Has well  
 City Police Albany  
 7-17 Spr  
 18 Spr  
 Lot 9 NW 1/4 NE 1/4  
 Houses on lots 3, 4 use water from  
 Spr. # 3  
 Houses on lots 9, 10, 2 Houses on Lot 11  
 Lot 13, 14 15 + 17 use water  
 from spr. 2  
 House boat on lot #18 has tap on bank  
 for water from spr # 1

Lot 8  
SW 1/4 NE 1/4

805.70  
50° 26' 30" W  
1320

1339.6  
S 89° 16' E

1339.6

1/4 Cor  
Sec 32.

Application No. 29556  
Permit No. 23284

REGISTERED  
 OREGON  
 LAND SURVEYOR  
 L. Burl Smith  
 OCT 22 1954  
 L. BURL SMITH  
 336

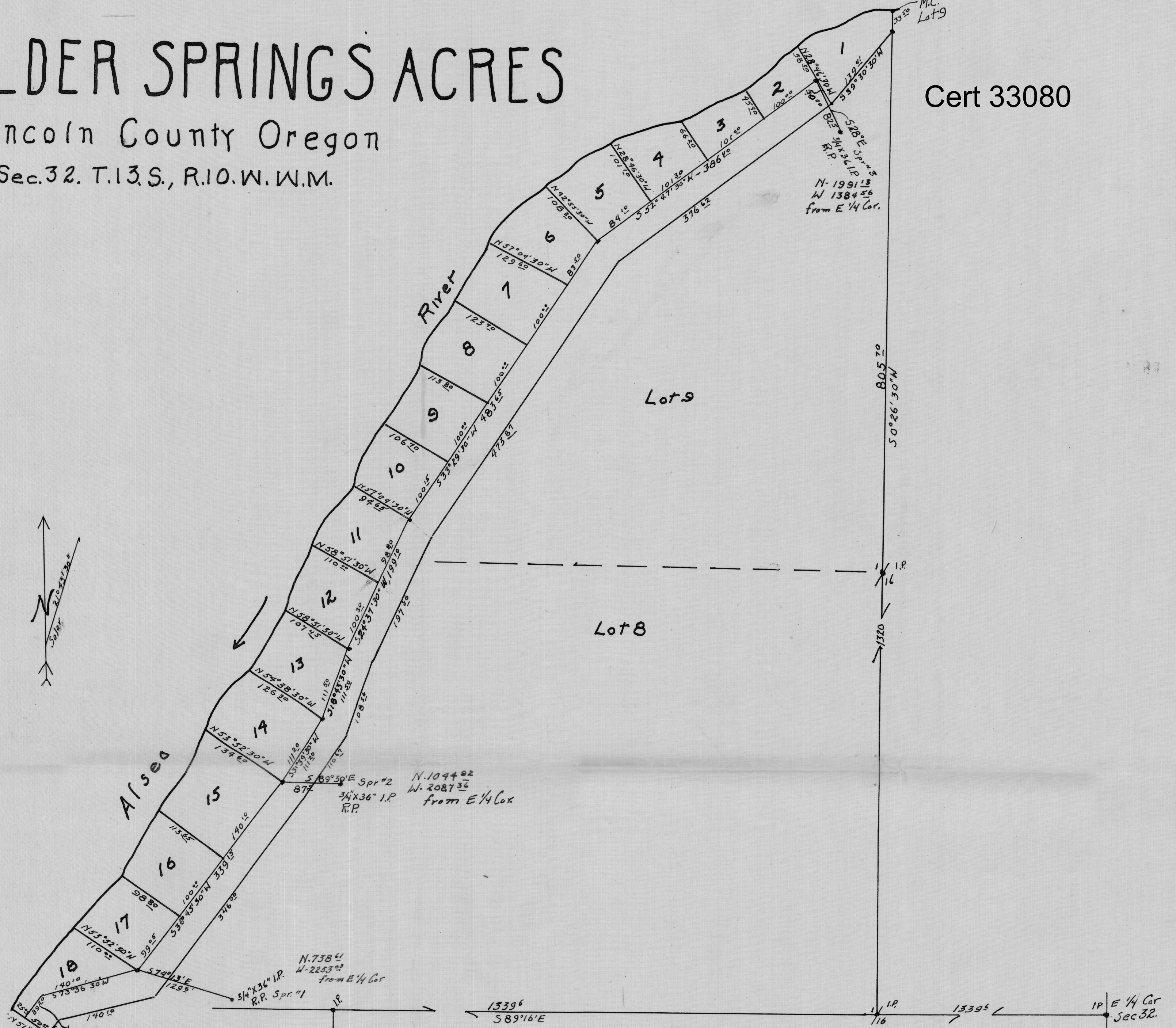


# ALDER SPRINGS ACRES

Lincoln County Oregon

Sec. 32. T. 13. S., R. 10. W. W.M.

Cert 33080



REGISTERED  
OREGON  
LAND SURVEYOR

*L. Burl Smith*

OCT. 22, 1954  
L. BURL SMITH  
336

Application No. 29556  
Permit No. 23284

29556