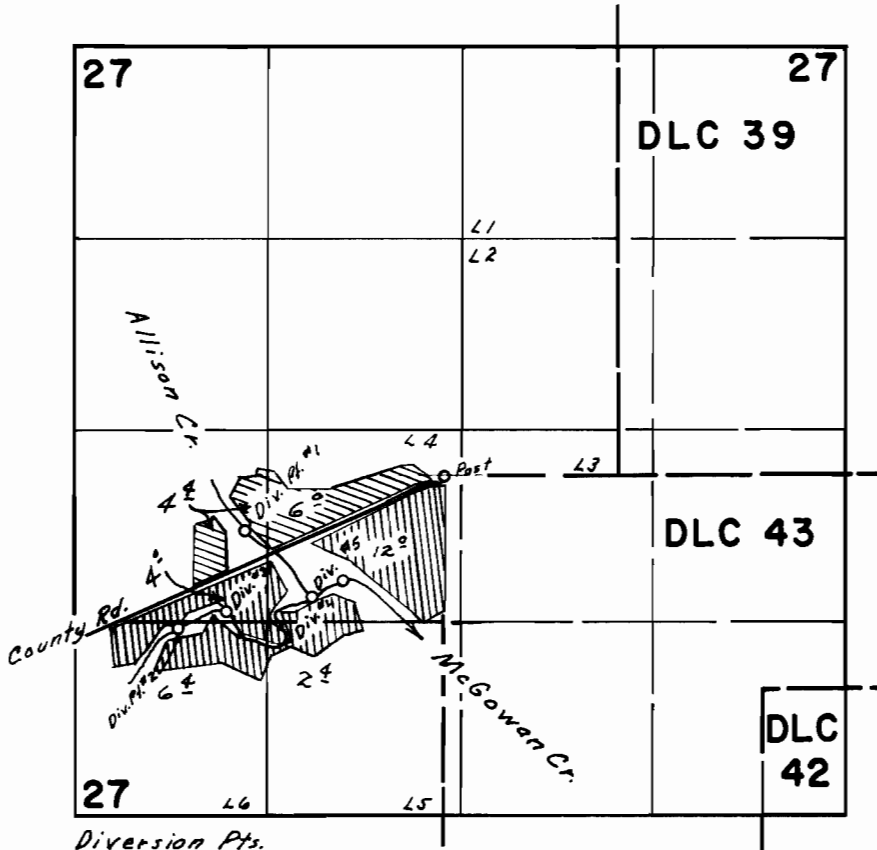


# T.16 S.R.2 W. W.M.



Diversion Pts.  
 No. 1 375 ft. S + 1370 ft. W,  
 No. 2 1050 ft. S + 1800 ft. W,  
 No. 3 925 ft. S + 1490 ft. W,  
 No. 4 825 ft. S + 915 ft. W,  
 No. 5 725 ft. S + 700 ft. W, All from the N.W. Corner of D.L.C. 43.

## FINAL PROOF SURVEY UNDER

Application No. 34226 Permit No. 26956  
 IN NAME OF

**HARRY F. & MYRTLE WILLIAMS**

Surveyed May 7, 1965, by *Clayton J. Barber*