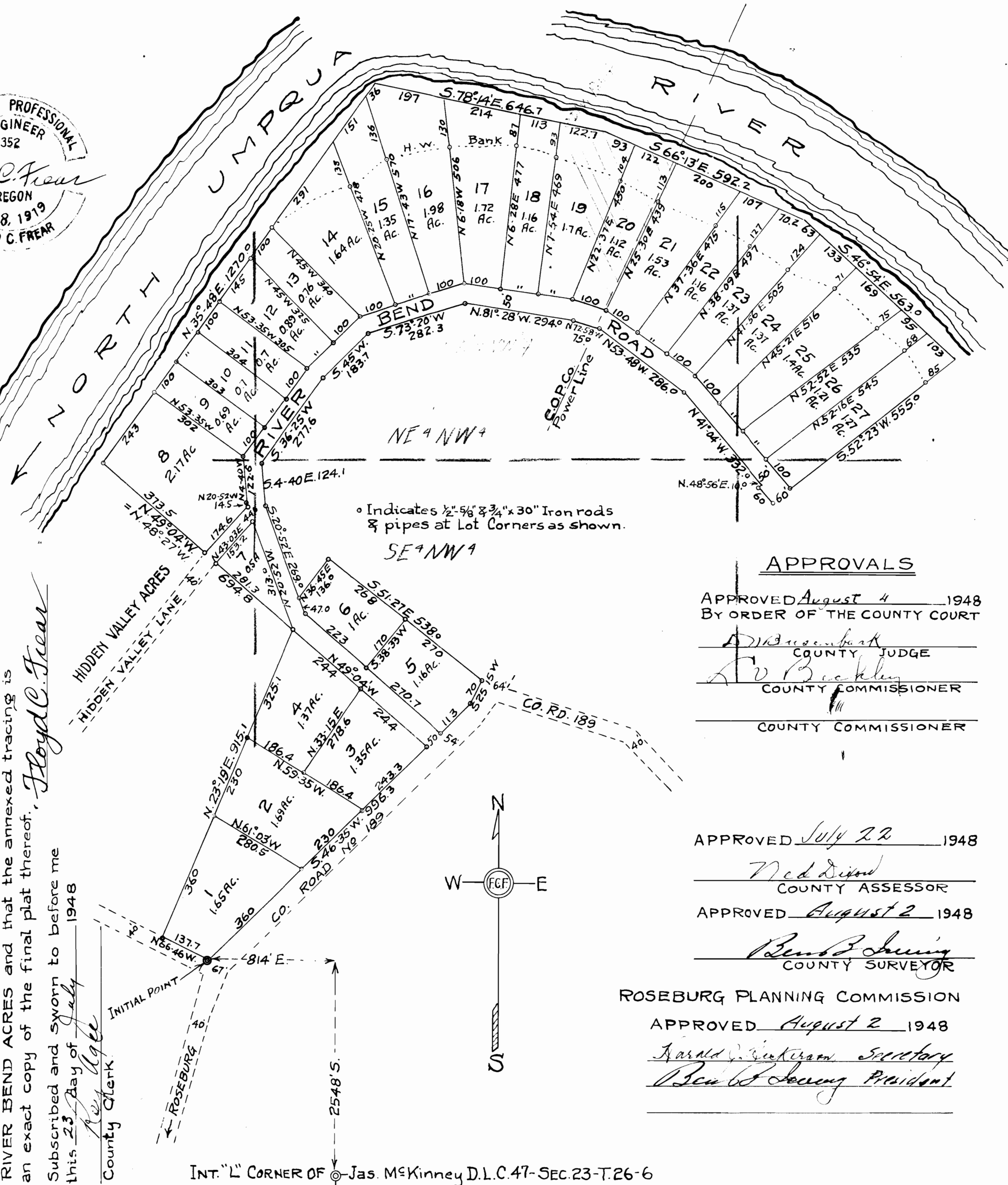


State of Oregon } ss
 County of Douglas }
 I, Floyd C. Frear being duly sworn depose and say that I am the surveyor who surveyed and prepared the plat of RIVER BEND ACRES and that the annexed tracing is an exact copy of the final plat thereof.
 Subscribed and sworn to before me this 23 day of July 1948
 Roy Agre
 County Clerk



o Indicates 1/2" x 5/8" & 3/4" x 30" Iron rods & pipes at Lot Corners as shown.

RIVER BEND ACRES

SECTION 23 - Twp. 26 S. - R. 6 W. - W. M.
 DOUGLAS COUNTY, OREGON
 Scale 1 inch = 200 ft.

CERTIFICATE OF SURVEYOR

I, Floyd C. Frear, being first duly sworn depose and say that I have surveyed and marked with proper monuments the lands shown on the annexed plat of which the following is a true and correct description to wit:-
 Beginning at a 2 inch by 36 inch iron pipe on the West right of way line of County Road No 189 and from which the Interior "L" Corner of James M^c Kinney D.L.C. No 47 in Section 23-T26S-R6W-W.M.-Douglas County, Oregon bears 814 feet East and 2548 ft. South, Thence N.66°46'W. 137.7ft. to a 1"x30" I. pipe, thence N.23°19'E. 915.1 ft. to a 1"x36" I. pipe, thence N.49°04'W. 694.8ft. to a 3/4"x30" I. pipe, thence N.35°48'E. 1270.0ft., thence S.78°14'E. 646.7 ft., thence S.66°13'E. 592.2 ft., thence S.46°54'E. 563.9ft., thence S.52°23'W. 615.0ft. to a 1"x36" I. Pipe, thence N.41°04'W. 60.0ft. to a 1"x36" I. Pipe, thence N.48°56'E. 10.0 ft., thence N.41°04'W. 332.0ft. to a 1"x36" I. pipe, thence N.53°48'W. 286.0 ft. to a 1"x30" I. pipe, thence N.72°58'W. 75.0 ft. to a 3/4"x30" I. Pipe, thence N.81°28'W. 294.0ft. to a 1"x30" I. pipe, thence S.73°20'W. 282.3 ft. to a 1"x30" I. pipe, thence S.45°00'W. 183.7ft. to a 1"x30" I. pipe, thence S.36°25'W. 277.6 ft. to a 1"x30" I. pipe, thence S.4°40'E. 124.1 ft. to a 1"x30" I. pipe, thence S.20°52'E. 269.0ft. to a 1"x30" I. pipe, thence N.36°45'E. 136.0ft. to a 1"x30" I. pipe, thence S.51°27'E. 538.0ft. to a 1"x30" I. pipe, thence S.25°15'W. 70.0ft. to a 1"x30" I. pipe thence S.46°35'W. 996.3 ft. to the place of beginning and containing 37.77 acres of land more or less.

APPROVALS

APPROVED August 4 1948
 BY ORDER OF THE COUNTY COURT

D. W. Busenbark
 COUNTY JUDGE
A. V. Buckley
 COUNTY COMMISSIONER
 COUNTY COMMISSIONER

APPROVED July 22 1948

Ned Dixon
 COUNTY ASSESSOR

APPROVED August 2 1948

Bert Schuyler
 COUNTY SURVEYOR

ROSEBURG PLANNING COMMISSION

APPROVED August 2 1948

Harold J. ... Secretary
Bert Schuyler President

ACKNOWLEDGEMENT

State of Oregon } ss
 County of Douglas }
 On the 19th day of July 1948
 appeared DORIS SALVEN a single woman to me personally known, who being duly sworn did say that she is the owner of the lands shown on the annexed plat and acknowledged the adjacent instrument was her free act and deed.

IN TESTIMONY WHEREOF I hereunto set my hand and seal the day and year above written.

Roy Agre
 COUNTY CLERK

DEDICATION

KNOW ALL MEN BY THESE PRESENTS: That I, DORIS SALVEN owner of the lands shown on the annexed plat, have caused the same to be surveyed and platted as and by the name of RIVER BEND ACRES and I do hereby dedicate to the public use forever the roads shown thereon.

Doris Salven

FILED August 4th 1948
Roy Agre
 COUNTY CLERK

INT. "L" CORNER OF Jas. M^c Kinney D.L.C. 47-SEC. 23-T. 26-6

Application No. 38922
 Permit No. 28863