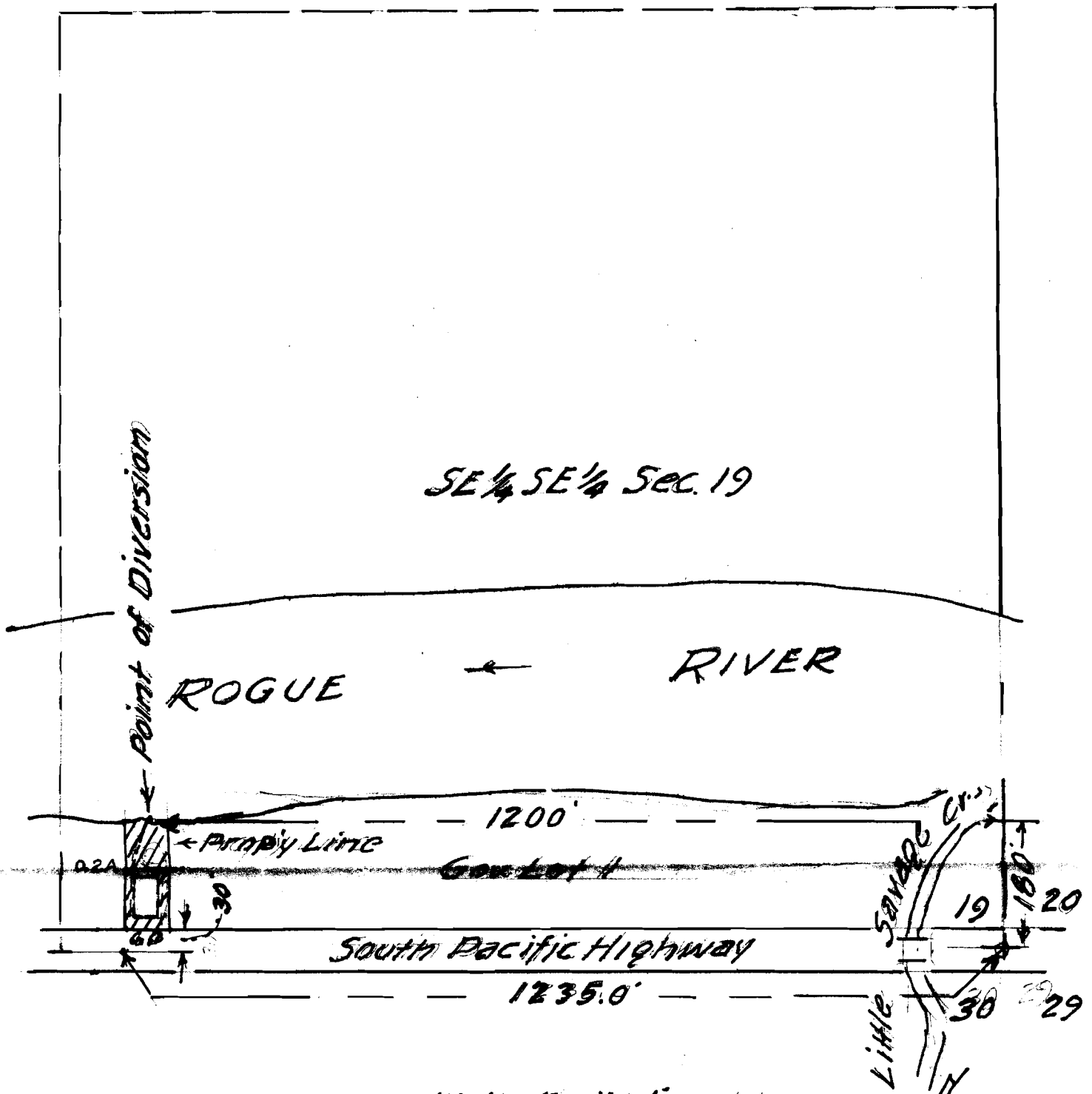


RECEIVED

JUL 27 1961

STATE ENGINEER  
SALEM, OREGON



Water Application of  
VIVIAN T. WILSON  
Sec. 19, T. 36 S., R. 4 W., W. 1 A.  
Scale 200' = 1"  
July, 1961  
Map by TAMM R. PEPPER  
Reg. Engr. # 838