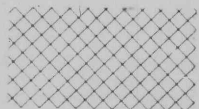


APP 39197

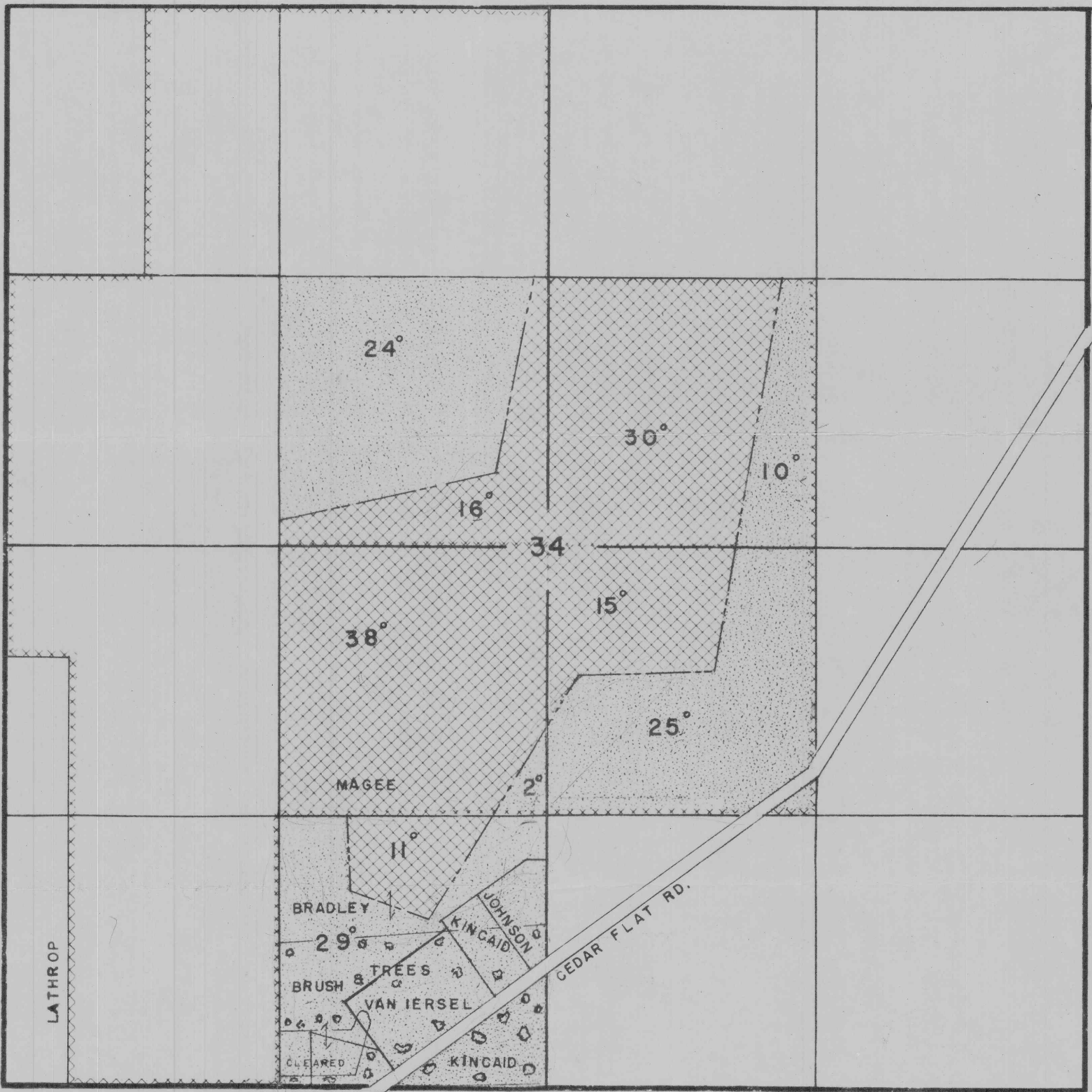
TOWNSHIP 38 S. RANGE 5 W. W. M.



RR DECREE, 1862, MUNGER CREEK
H.O. & E.M. Norton Cert 76352 1.84 cts Irr & stock Stites Ditch
S/1 to C.M. STITES & Est. of W.C. Stites



MUNGER CREEK - 1916 ^{Permit #} 2938
Cert 3362 H.O. & C.M. Norton May 25, 1916 1.13 cts
Munger Cr. supplemented by water from John or Mule Gulch, Marble Gulch & China Gulch



SCALE = 8" = 1 MILE
FEB. 7. 1964

RECEIVED
FEB 24 1964
STATE ENGINEER
SALEM, OREGON