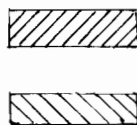
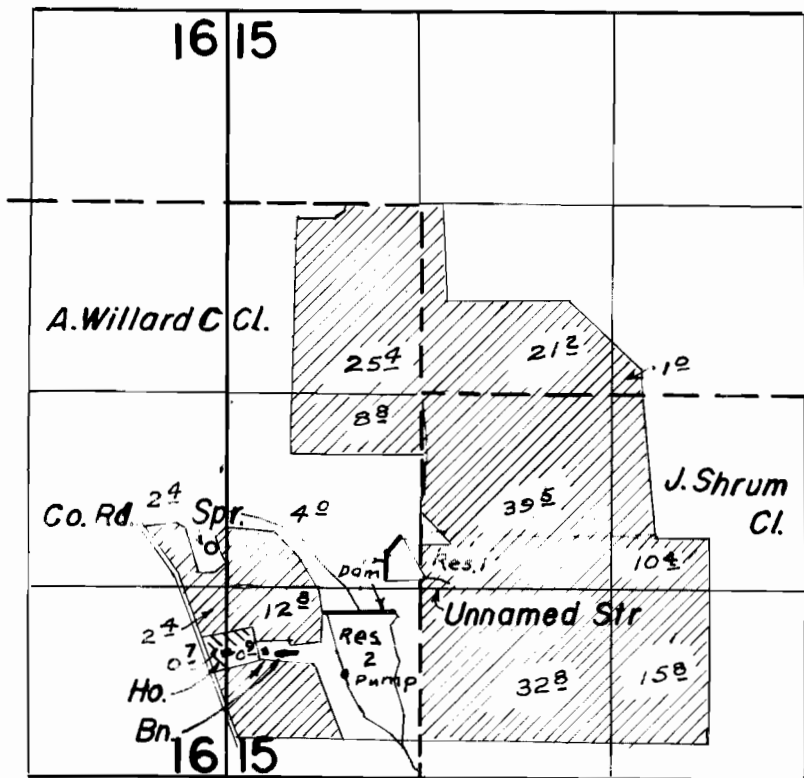


# T. 7 S. R. 1 W. W. M.



Land irrigated from  
Res. 1 & Res. 2

Land irrigated from Res. 2

Div. N. Res. 1 1090' South  
and 230' W. of N.W. Cor.

J. Shrum D.L.C.  
Div. S. Res. 2 1490' South  
and 420' W. of N.W. Cor. of  
J. Shrum D.L.C.

## FINAL PROOF SURVEY UNDER

37312                      28624  
Application No. R-37311 Permit No. R-3214  
IN NAME OF

***Barnes Bros.***

Surveyed Aug. 30 1965, by F. Siegmund.