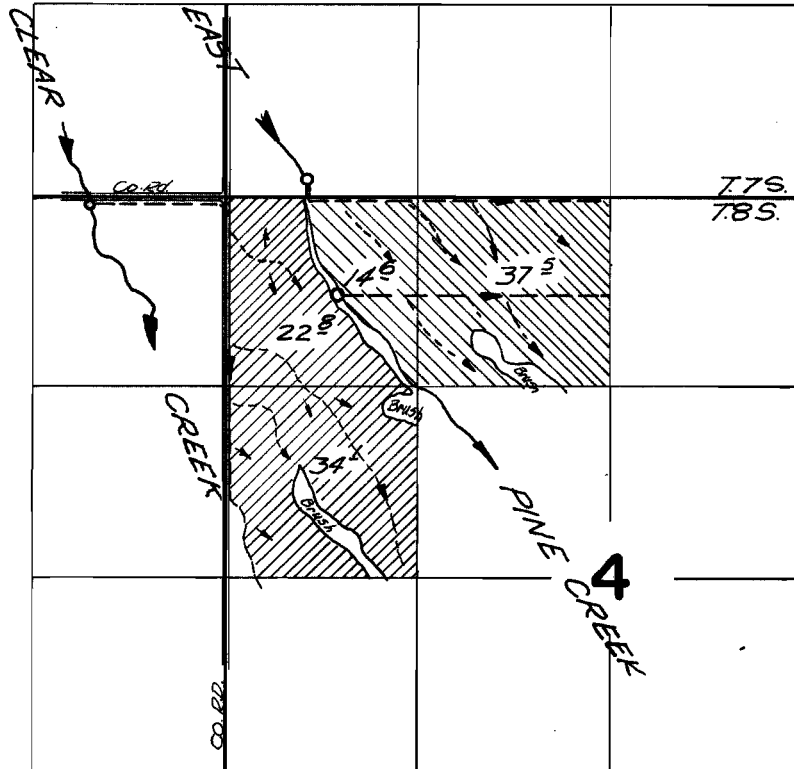




T. 7 & 8 S. R. 46 E. W.M.



Div. Pt's. located 50 ft. S. & 930 ft. W.; 120 ft. N. & 560 ft. E.; 670 ft. S. & 770 ft. E. all from the Northwest corner of Section 4.

 PINE CREEK
 CLEAR CREEK

FINAL PROOF SURVEY UNDER

Application No. 41724 Permit No. 31152
IN NAME OF

FRANK HUFF

Surveyed Aug. 6, 1966, by V. GARNER