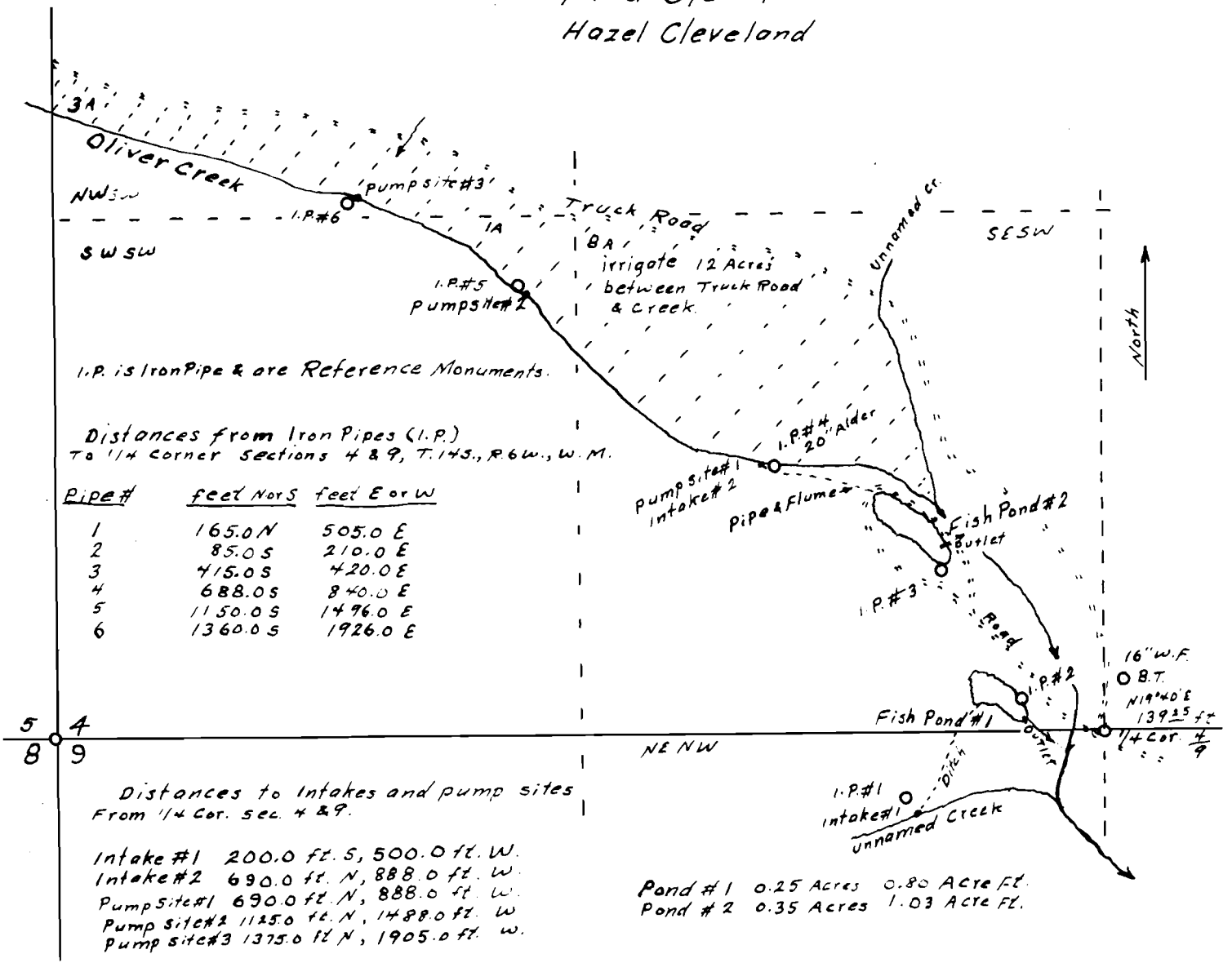


Sections 4 and 9, T.14S., R. 6W., W.M
 Scale: 1 inch = 400 feet.

Fred Cleveland
 Hazel Cleveland



I.P. is Iron Pipe & are Reference Monuments.

Distances from Iron Pipes (I.P.)
 To 1/4 corner sections 4 & 9, T.14S., R.6W., W.M.

Pipe #	feet NorS	feet E or W
1	165.0 N	505.0 E
2	85.0 S	210.0 E
3	415.0 S	420.0 E
4	688.0 S	840.0 E
5	1150.0 S	1496.0 E
6	1360.0 S	1926.0 E

Distances to Intakes and pump sites
 From 1/4 Cor. sec. 4 & 9.

- Intake #1 200.0 ft. S, 500.0 ft. W.
- Intake #2 690.0 ft. N, 888.0 ft. W.
- Pump Site #1 690.0 ft. N, 888.0 ft. W.
- Pump Site #2 1125.0 ft. N, 1488.0 ft. W.
- Pump Site #3 1375.0 ft. N, 1905.0 ft. W.

- Pond #1 0.25 Acres 0.80 Acre Ft.
- Pond #2 0.35 Acres 1.03 Acre Ft.

RECEIVED
 MAR 18 1952
 STATE ENGINEER
 SALEM, OREGON

A. L. M. Esq.
 Reg. P.E. Ore. 1903