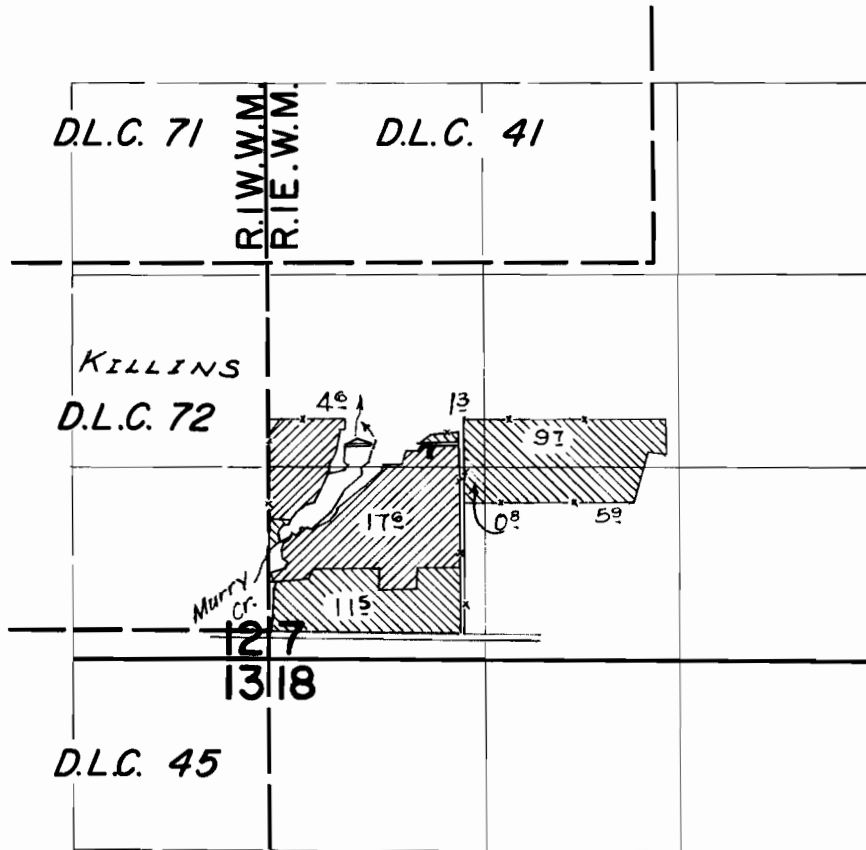


T.5S.R.IW.&IE.W.M.



 Primary
 Supplemental

Div. Pt. located 1280 ft. N. & 600 ft. E. from the S.E. Corner
KILLINS D.L.C. 72

FINAL PROOF SURVEY UNDER

R-37858 R-3001
 Application No. 37859 Permit No. 28165
 IN NAME OF

ELMER Y. GLICK

Surveyed May 14 1965, by *St Jackson*