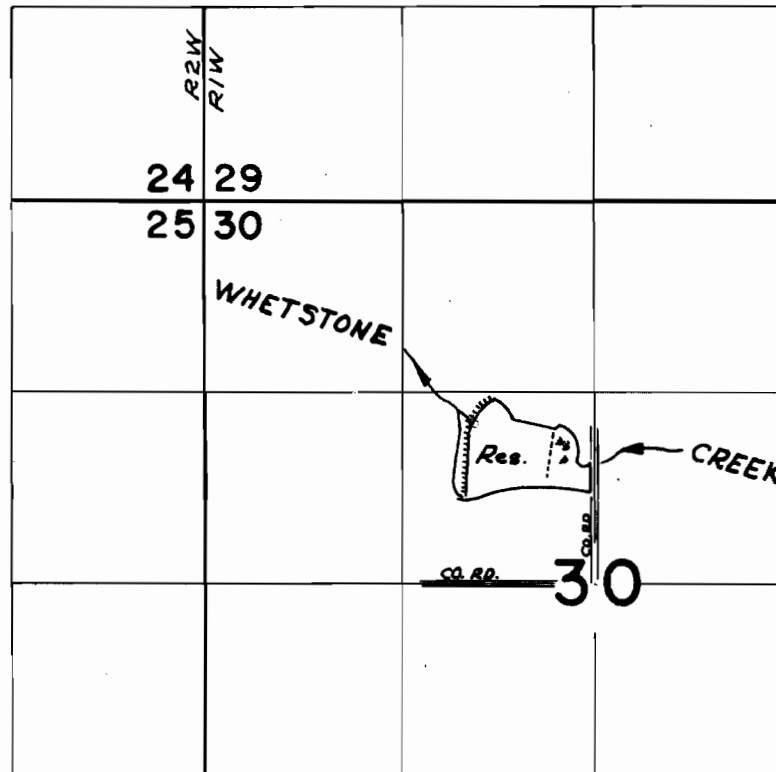


T36 S R1 & 2 W W M



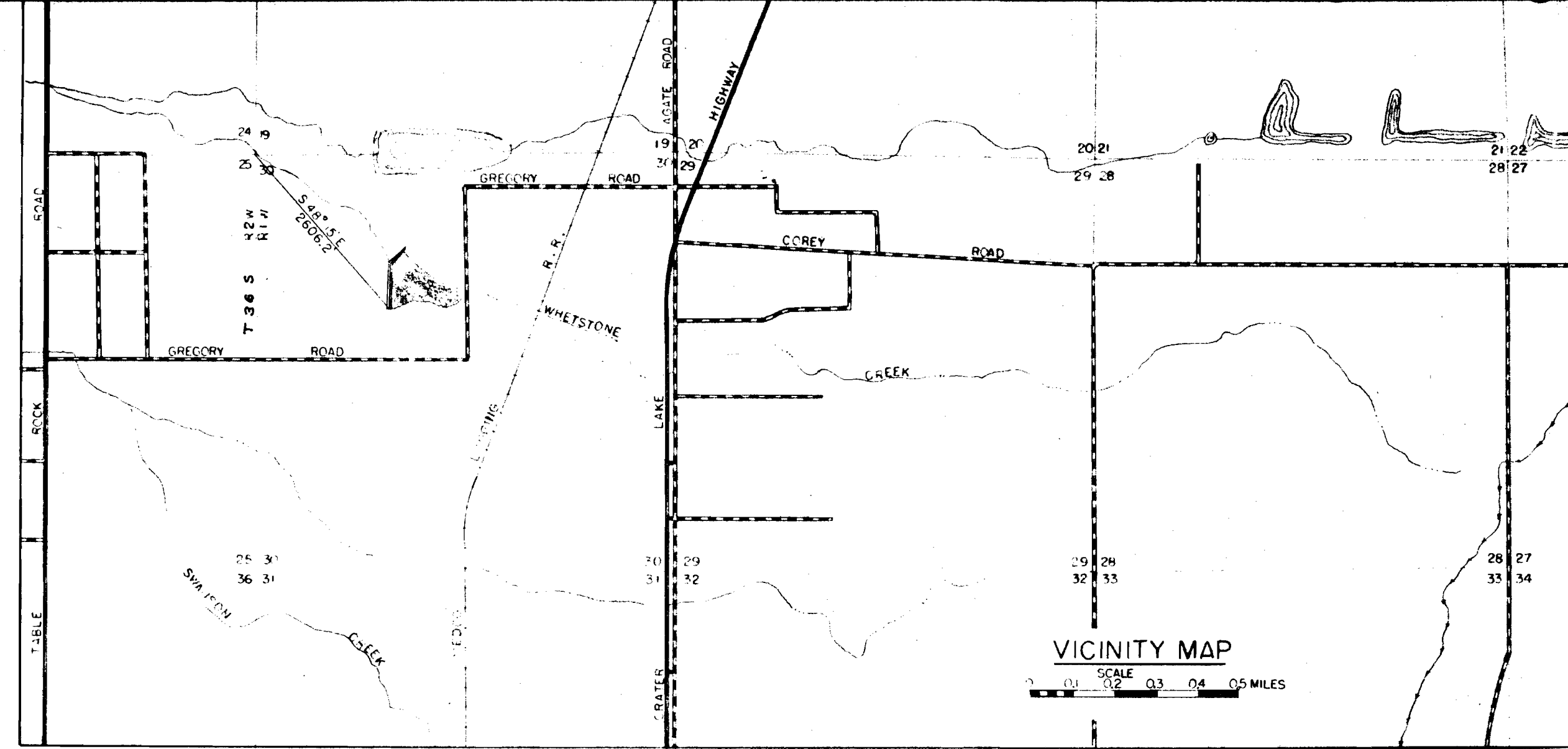
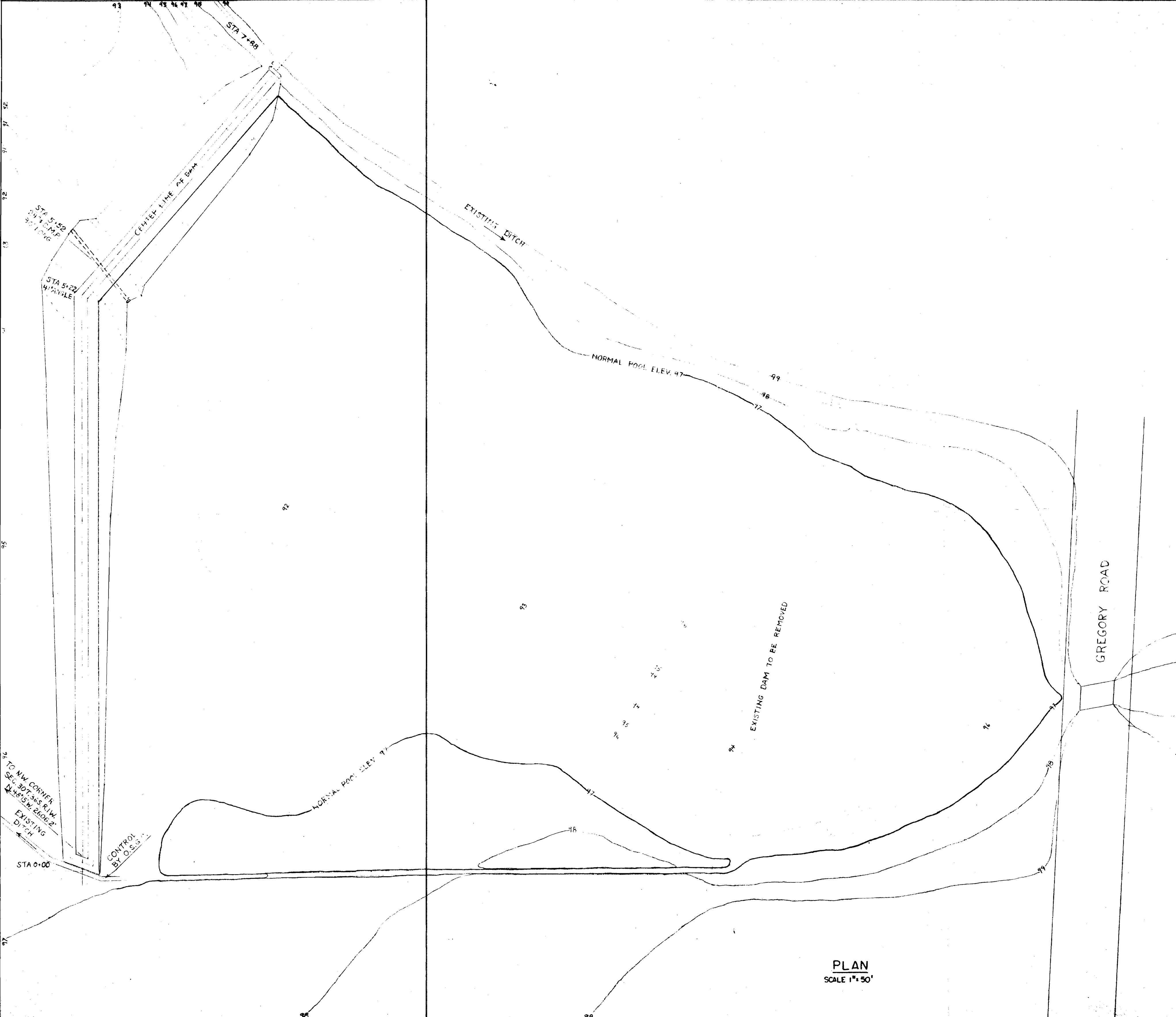
Div. Pt. located 1120 ft. N. & 860 ft. W.
from the Center Section 30

FINAL PROOF SURVEY UNDER

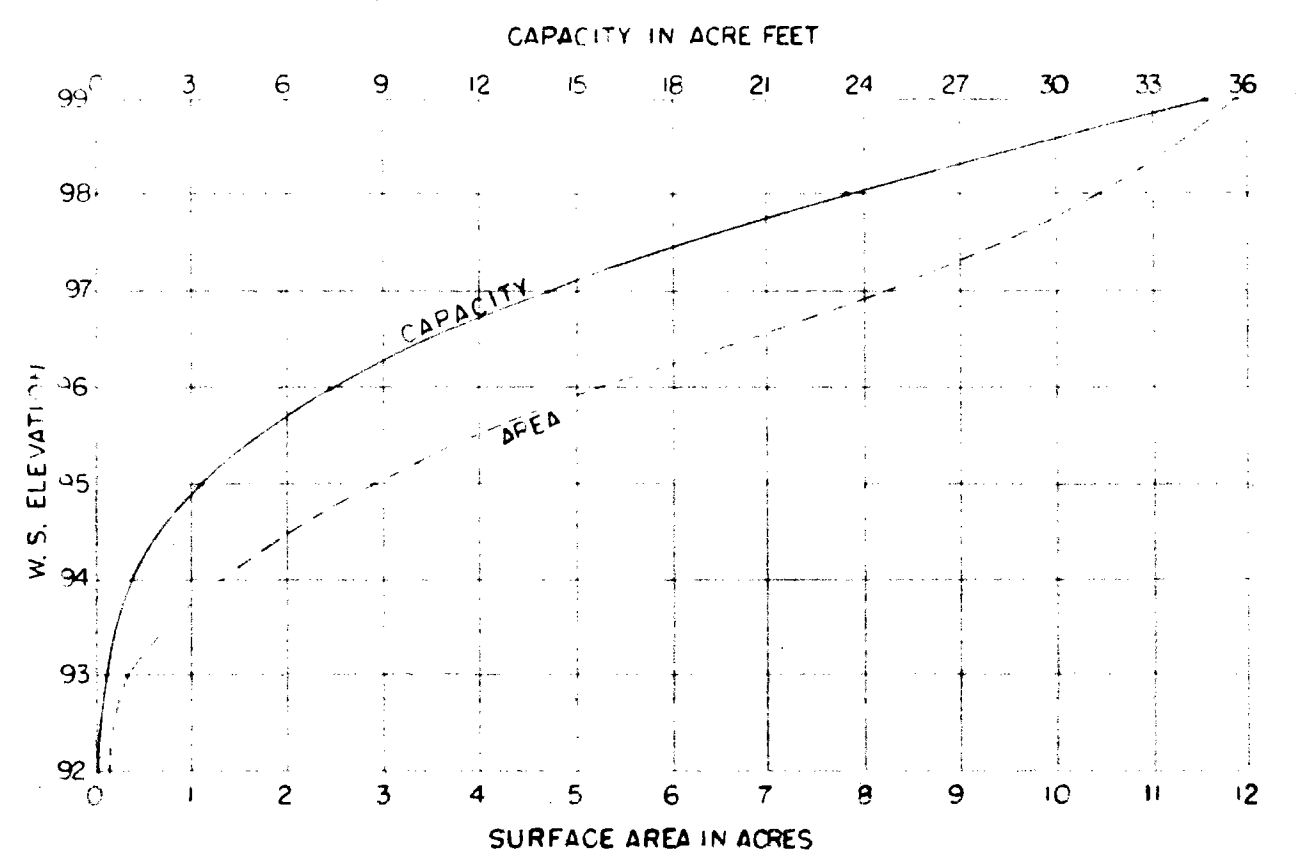
R-34761 R-2595
Application No. 34762 Permit No. 27288
IN NAME OF

OREGON STATE GAME COMMISSION

Surveyed JUNE 2, 1966, by V. GARNER



Application No. *R-34761 + 34762*
 Permit No. *R-2595 + 27288*



PLAN
SCALE 1" = 50'

APPROVED *May 16, 1961*
Lewis A. Stanley
 STATE ENGINEER

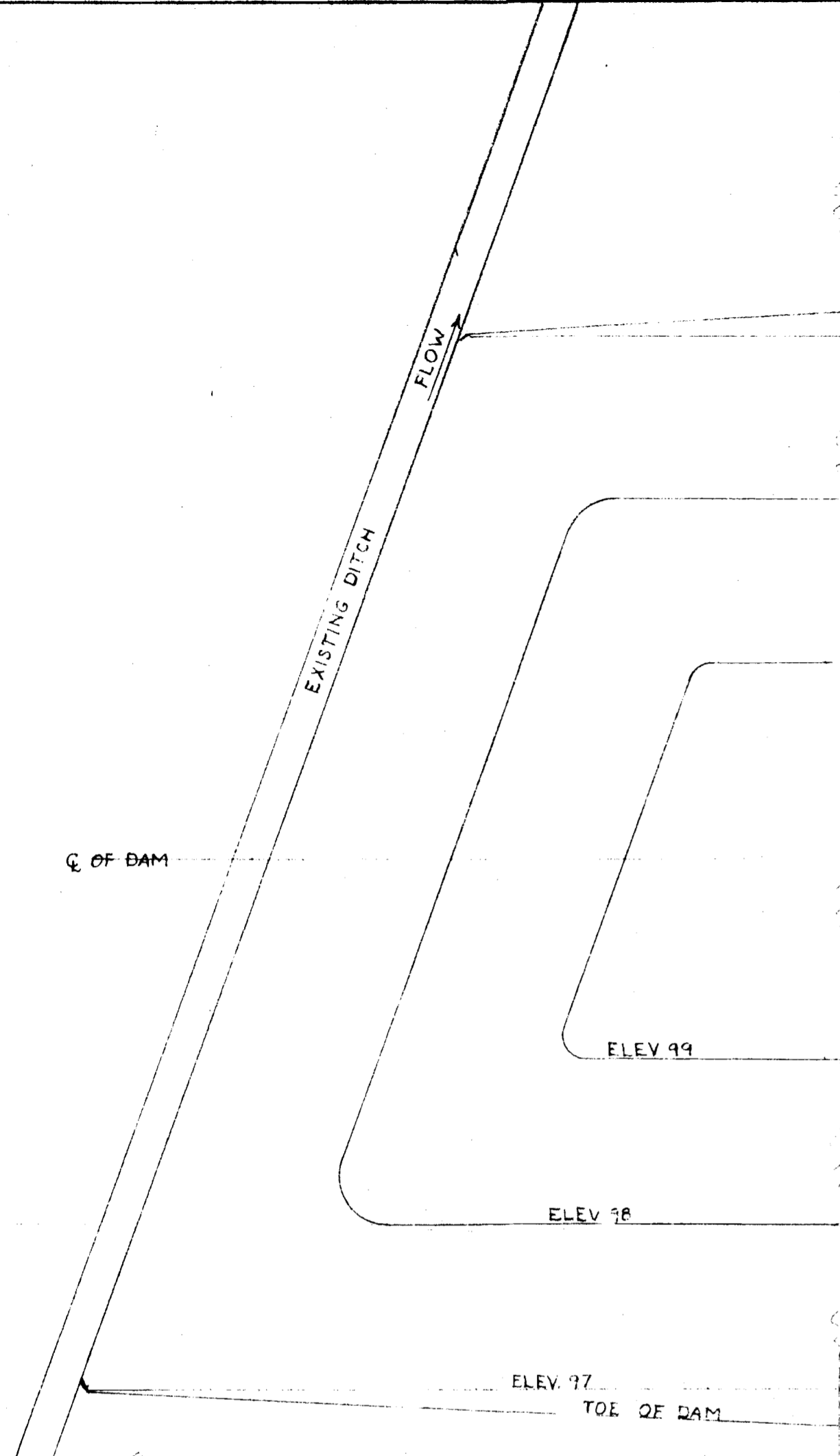
RECEIVED
 MAR 24 1961
 STATE ENGINEER
 GALELION DIVISION

George Kenna

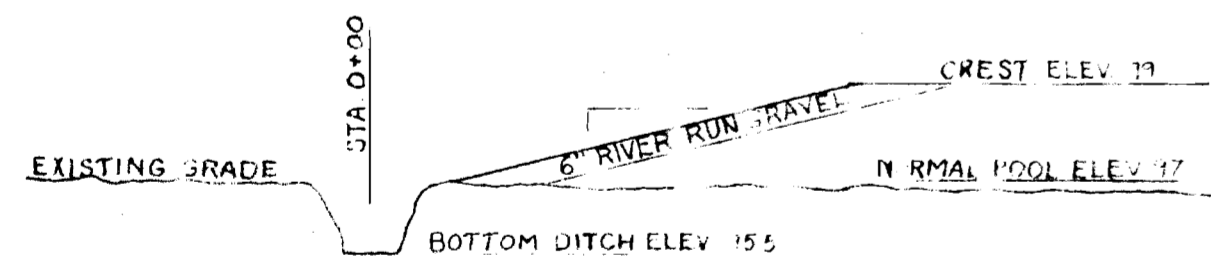
REVISED 3-17-61 GHC

R.G.M.A.
 WHETSTONE CREEK
 IMPROUNDMENT

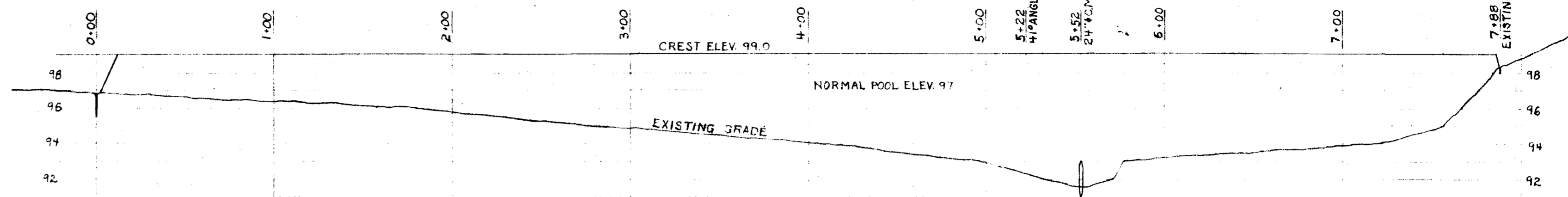
SCALE AS SHOWN	PLATE 1 OF
DRAWN 2-8-61 BY KSL	2 PLATES
ENGINEER <i>Arthur H. Campbell</i>	1117
CHECKED BY ASST. DIRECTOR	
APPROVED BY DIRECTOR	



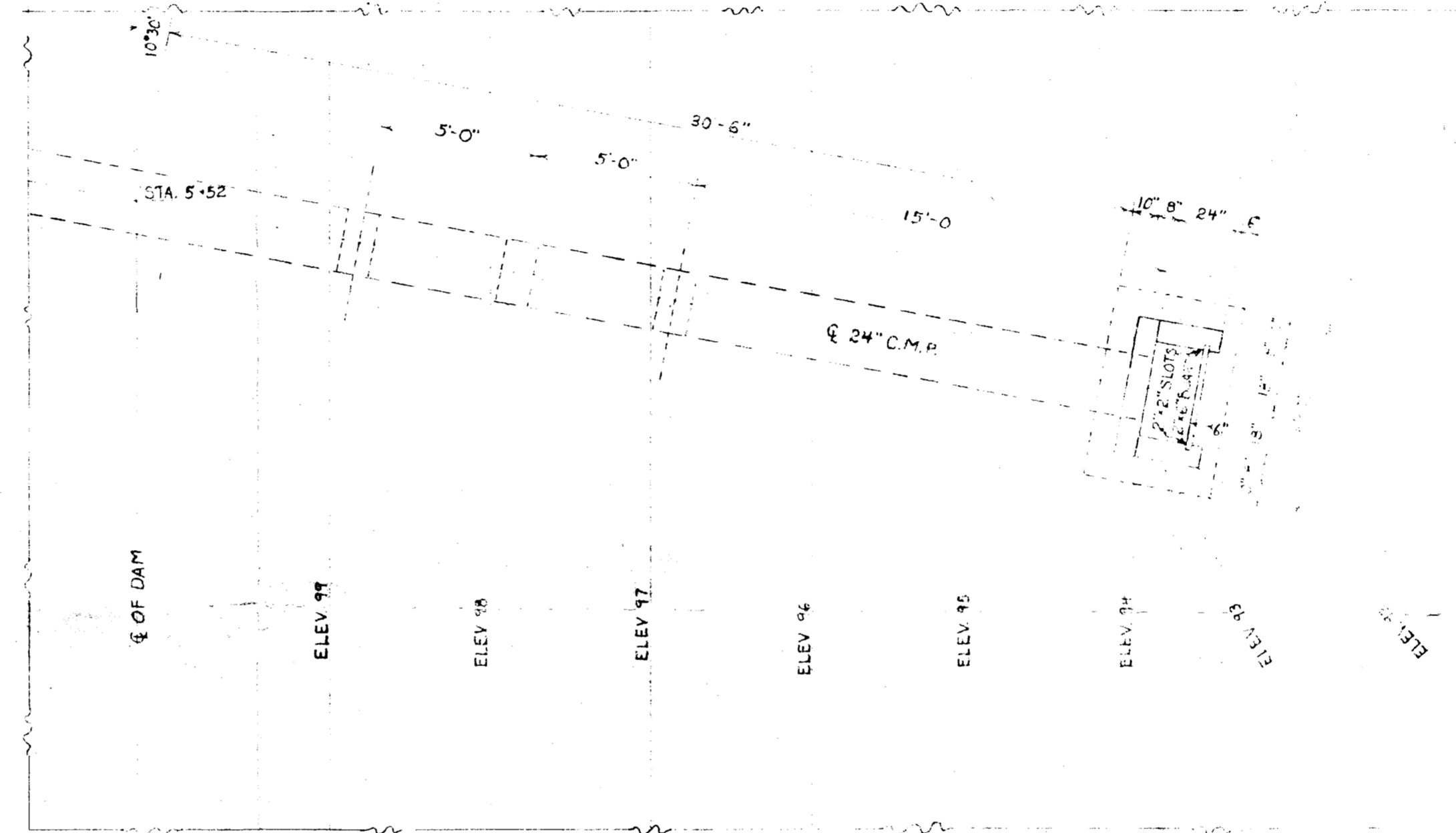
PLAN



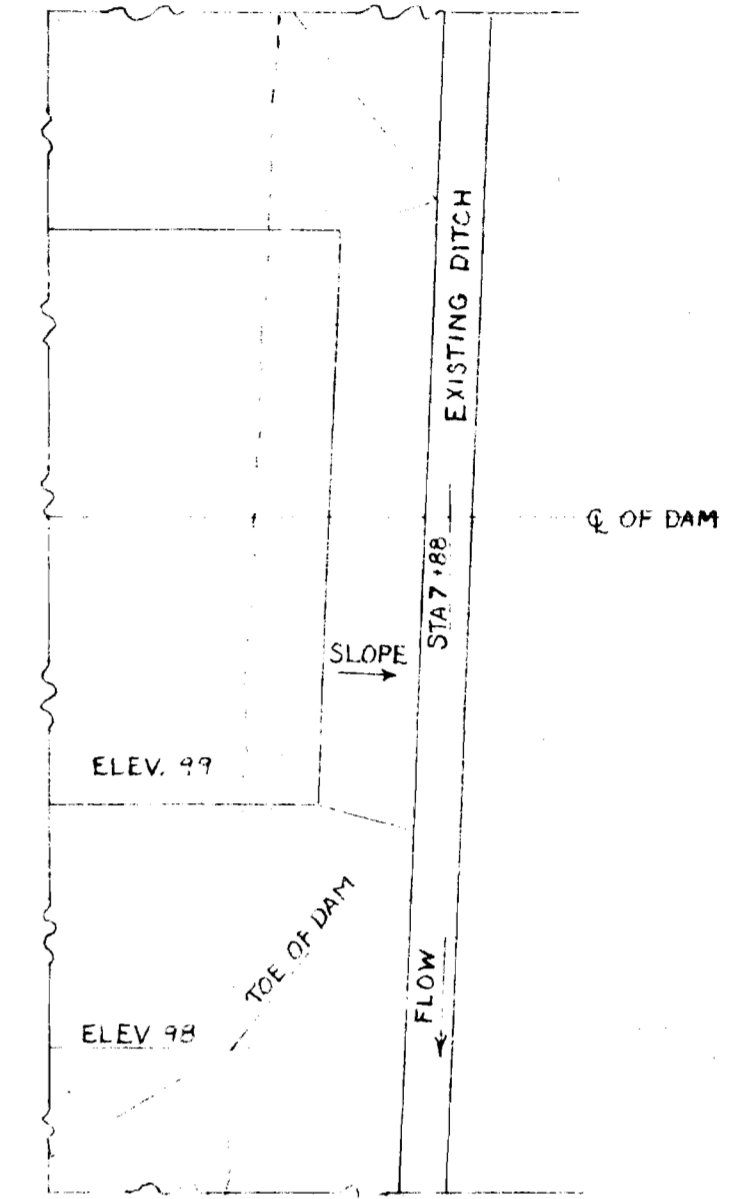
SECT. Q OF DAM
SCALE 1/4" = 1'-0"



SECT. Q OF DAM
SCALE HORIZ. 1" = 50' VERT. 1" = 5'



PLAN OF CONTROL
SCALE 1/4" = 1'-0"



PLAN



SECT. Q OF DAM
SCALE 1/4" = 1'-0"

Application No. *R-34761 + 34762*
Permit No. *R-2595 + 27288*

O.S.G.C. TO PLANT THE GRADE ON CREST + DOWNSTREAM FACE

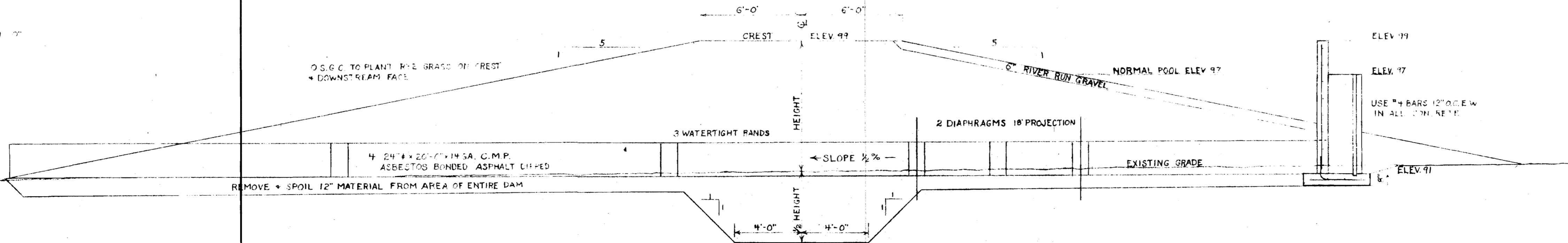
REMOVE + SPOIL 12" MATERIAL FROM AREA OF ENTIRE DAM

4 24" x 20' x 14.5A. C.M.P. ASBESTOS BONDED ASPHALT CHIPPED

3 WATERTIGHT BANDS

2 DIAPHRAGMS 18" PROJECTION

USE #4 BARS 12" O.C. EW IN ALL CONCRETE



SECT. AT 24" PIPE
SCALE 1/4" = 1'-0"

APPROVED *May 16, 1961*

Lewis A. Stanley
STATE ENGINEER

RECEIVED
MAR 23 1961
STATE ENGINEER
GALATIEN

REVISED 3-17-61 G.H.C.

R.G.M.A.
WHETSTONE CREEK
IMPOUNDMENT

SCALE AS SHOWN	PLATE 2 OF
DRAWN 2-9-61 BY G.H.C.	2 PLATES
ENGINEER <i>George J. Kern</i>	
CHECKED BY <i>George J. Kern</i>	
APPROVED BY DIRECTOR	1117