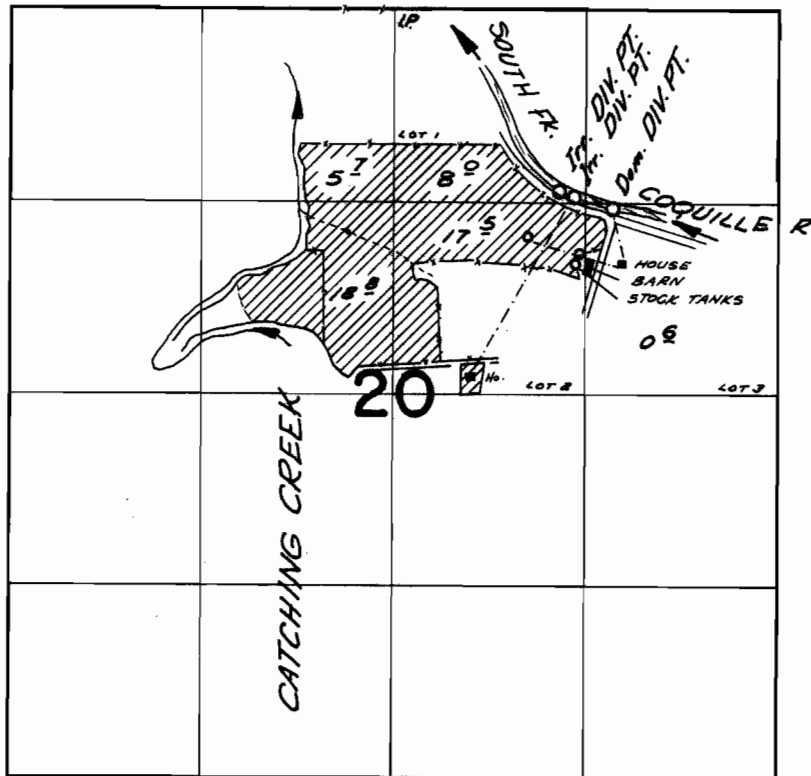


T.29S. R.12W. W.M.



*Div. Pts. located 1250 ft. S., 1140 ft. E.; 1290 ft. S.
1230 ft. E.; 1370 ft. S. & 1510 ft. E., all from
the North 1/4 corner of section 20.*

FINAL PROOF SURVEY UNDER

Application No. 39621 Permit No. 29477
IN NAME OF

VERNE LUNDY

Surveyed Oct. 10, 1966, by V. GARNER