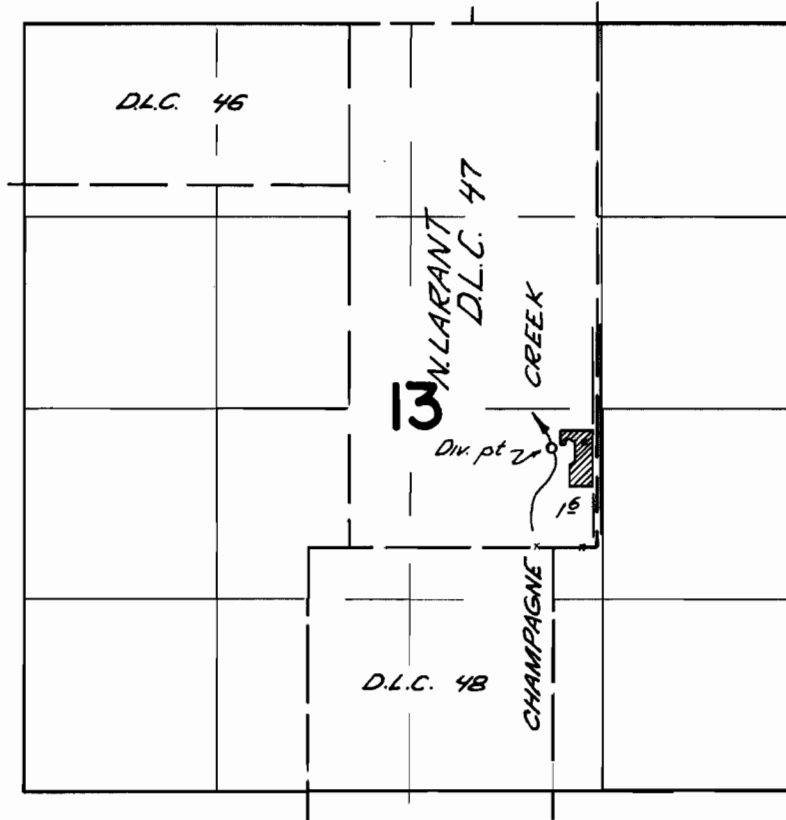


T.27S. R.7W. W.M.



Div. pt. located 670 ft. N. and 300 ft. W. from
the S.E. corner N. Larant D.L.C. 47

FINAL PROOF SURVEY
UNDER

Application No. 40962 Permit No. 30547
IN NAME OF

GLEN HUMBERT

Surveyed April 20 1967, by V. Garner