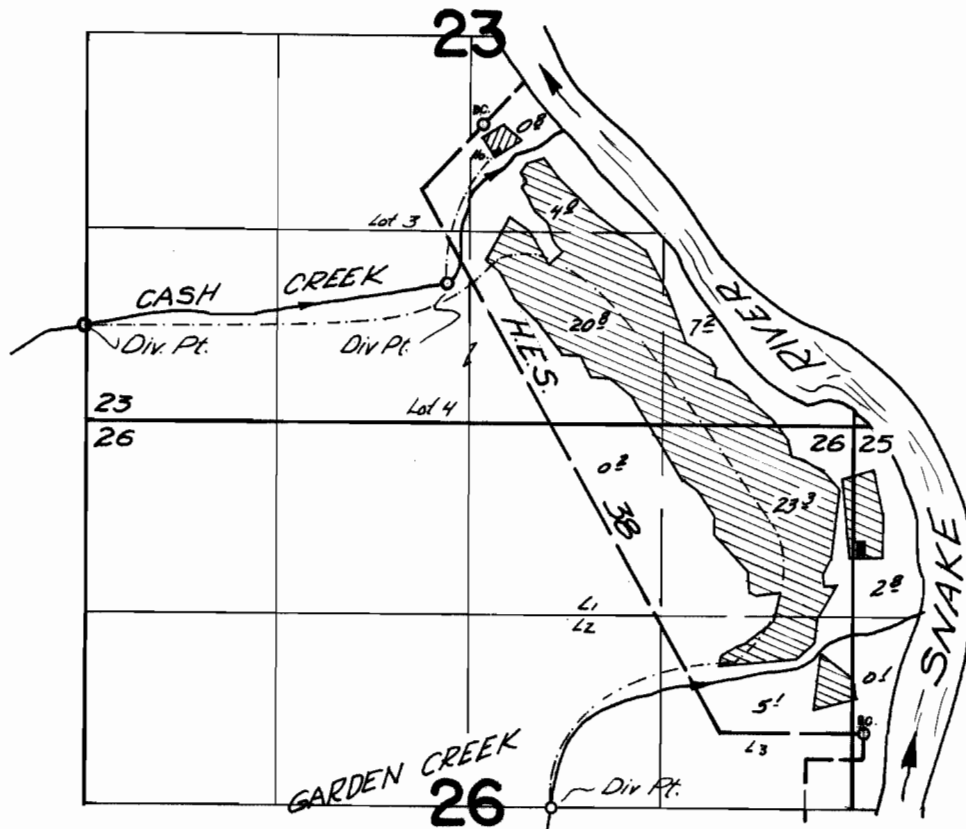


T.6N. R.47E. W.M.



Div. Pts. located 1400 ft. S. & 2720 ft. W.; 1100 ft. S. & 230 ft. W., both from the most northerly meander cor. H.E.S. 3B; 520 ft. S. & 2140 ft. W. from the most easterly meander cor. H.E.S. 3B

 from Cash Creek  from Cash and Garden Creeks

FINAL PROOF SURVEY UNDER

Application No. 37203... Permit No. 27724...
IN NAME OF

WALTER PURCELL

Surveyed Oct. 9, 1967, by V. Garner