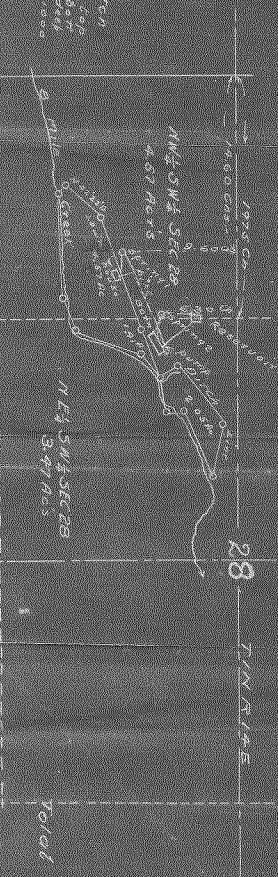


Ditch
5.222 on top
1/4 - 200 ft
1/4 - 200 ft
1/4 - 200 ft



I, J. F. MILLMAN, Surveyor of Wasco County, Oregon do hereby certify that the map was made from notes taken during a visit of survey made by me on Jan. 28, 1920 and that it is correct. I represent the water distributed in the accompanying application together with the location of streams and other claims in the immediate vicinity and has written thereon the area over which I hold special subdivisions which I proposed containing.

J. F. MILLMAN
City of Portland
Oregon

Springs & IRRIGATED LANDS
J. F. MILLMAN

Recording No. 71258
44-2-14-5

Total 8.04 AC