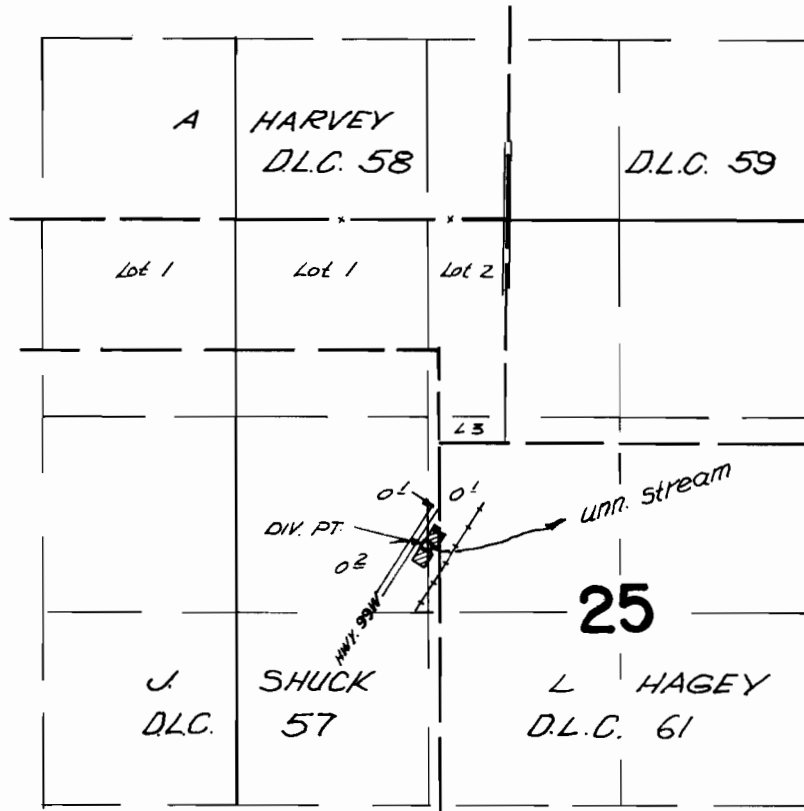


T.3S. R.3W. W.M.



div. pt. located 2240 ft. S and 540 ft. W. from
the S.E. corner A. Harvey D.L.C. # 58

FINAL PROOF SURVEY UNDER

Application No. 42244 Permit No. 3/681
IN NAME OF

CHARLES M. BUTLER

Surveyed March 31, 1967, by V. Garner