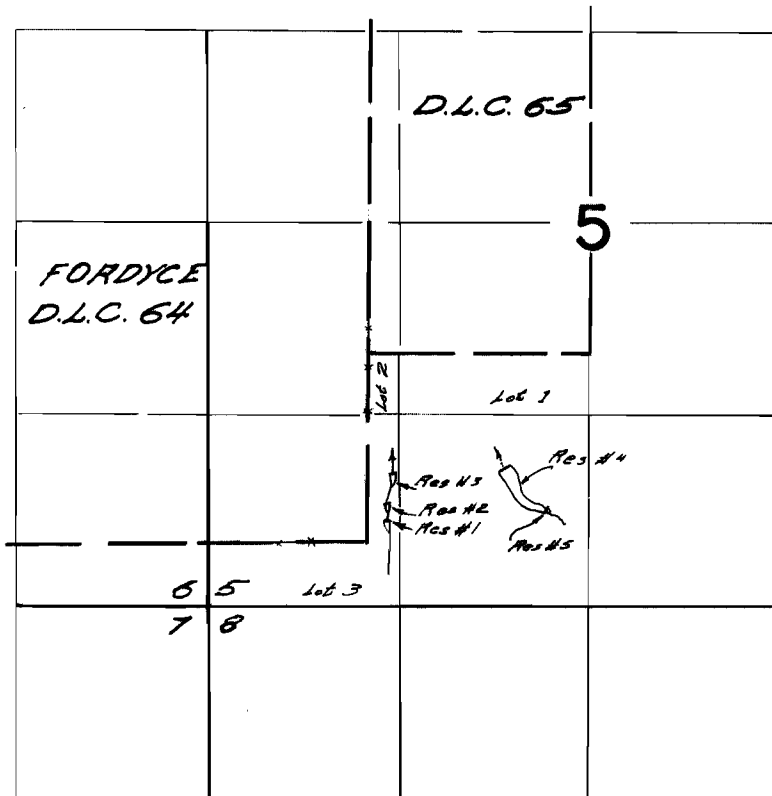


# T.3S. R.3E.W.M.



Diversion Points located - Res #4-480 ft. N. & 930 ft. E.;  
Res #5-200 ft. N. & 1230 ft. E.;  
Both from S.E. Cor. Fordyce D.L.C. 64

## FINAL PROOF SURVEY UNDER

R-37801      R-2998

Application No. 37802. Permit No. 28156  
IN NAME OF

E. E. BRISCOE

Surveyed July 7, 1967, by W. C. Ruppert