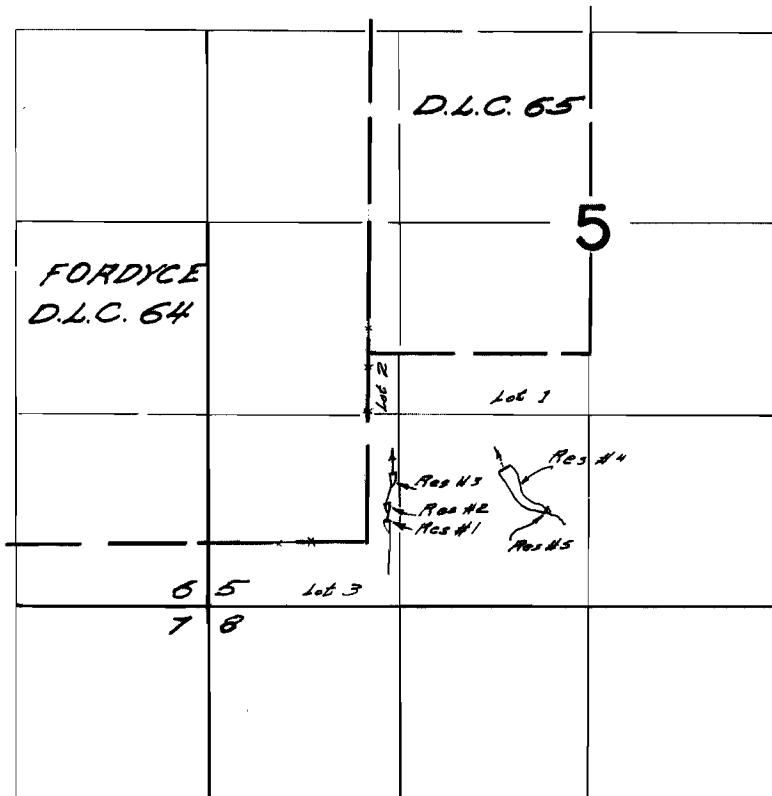


T.3S. R.3E.W.M.



Diversion Points located - Res #4-480 ft. N. & 930 ft. E.;
 Res #5-200 ft. N. & 1230 ft. E.;
 Both from S.E. Cor. Fordyce D.L.C. 64

FINAL PROOF SURVEY UNDER

R-37801 R-2998

Application No. 37802. Permit No. 28156
 IN NAME OF

E. E. BRISCOE

Surveyed July 7, 1967, by W. C. Ruppert