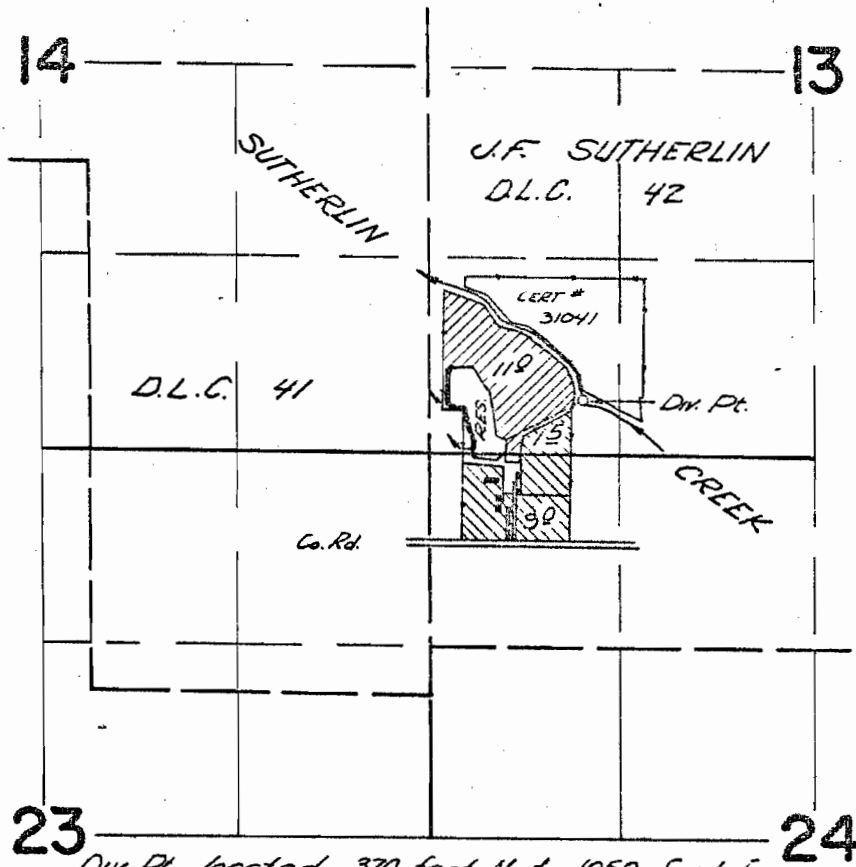


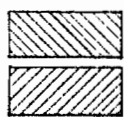
T.25 S. R.5W. W.M.



Div. Pt. located 370 feet N. & 1050 feet E. from the S.W. corner Section 13

FINAL PROOF SURVEY
UNDER

35819	27517
R-3581B	R-2650
38193	28463



Application No. *R-38192*. Permit No. *R-3164*
IN NAME OF

IVAN E. HOLM

Surveyed *April 21, 1967*, by *V. Garner*