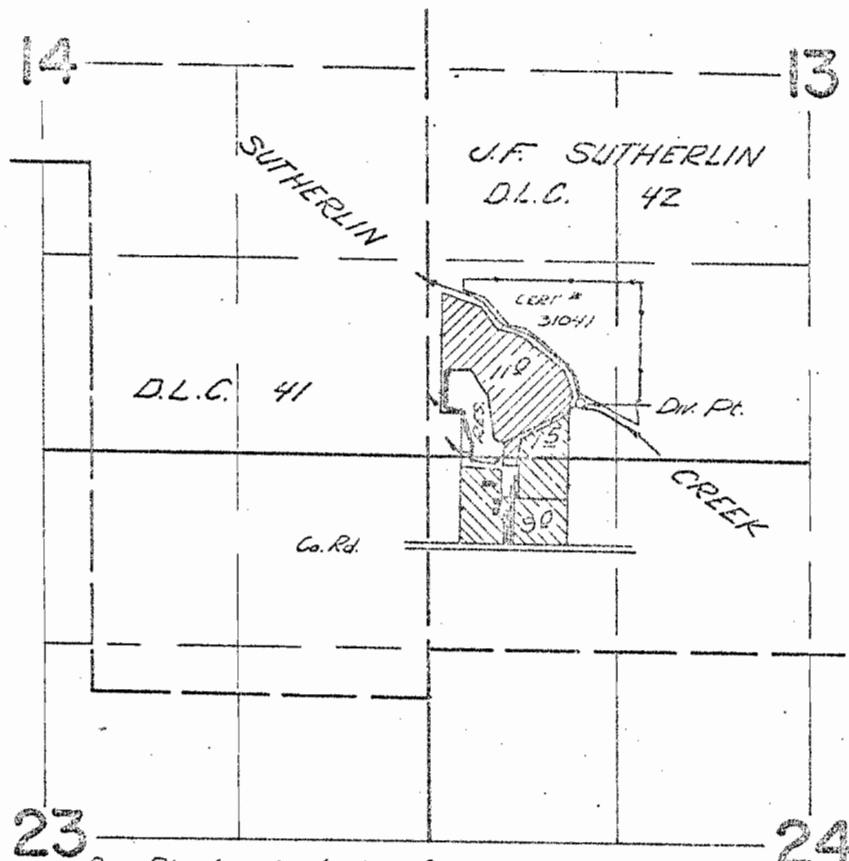


# T.25 S. R.5W. W.M.



Div. Pt. located 370 feet N. & 1050 feet E.  
from the S.W. corner Section 13

## FINAL PROOF SURVEY UNDER

35819	27517
R-35818	R-2650
38193	23463

Application No. R-38192 Permit No. R-3164

IN NAME OF

IVAN E. HOLM

Surveyed April 21, 1967, by V. Garner

