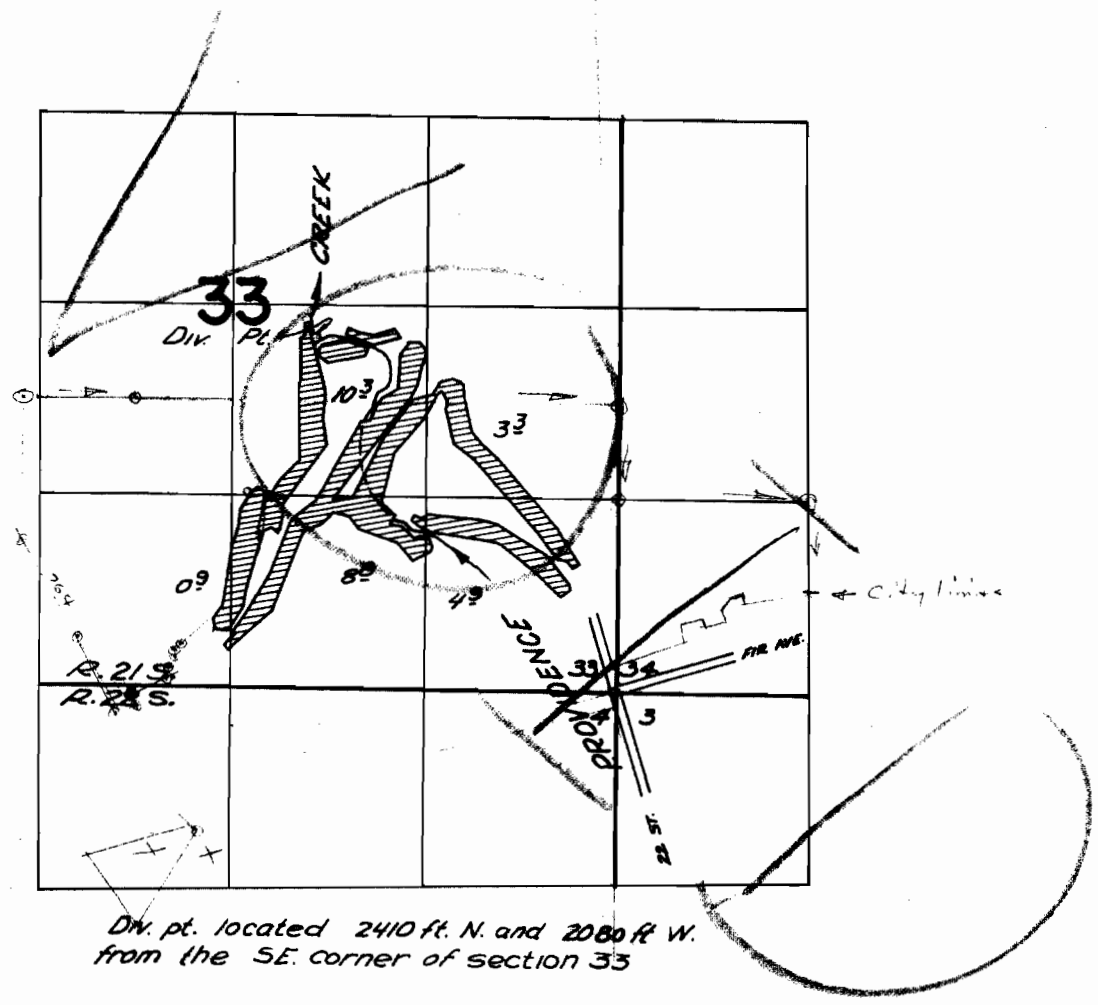


N
227° 30''

T21 & 22 S. R.12W. W.M.



Div. pt. located 2410 ft. N. and 2080 ft. W.
from the SE. corner of section 33

FINAL PROOF SURVEY UNDER

Application No. 40708 Permit No. 29754
IN NAME OF
INTERNATIONAL PAPER COMPANY
GARDINER PAPER MILL

Surveyed July 13, 1967, by V. Garner