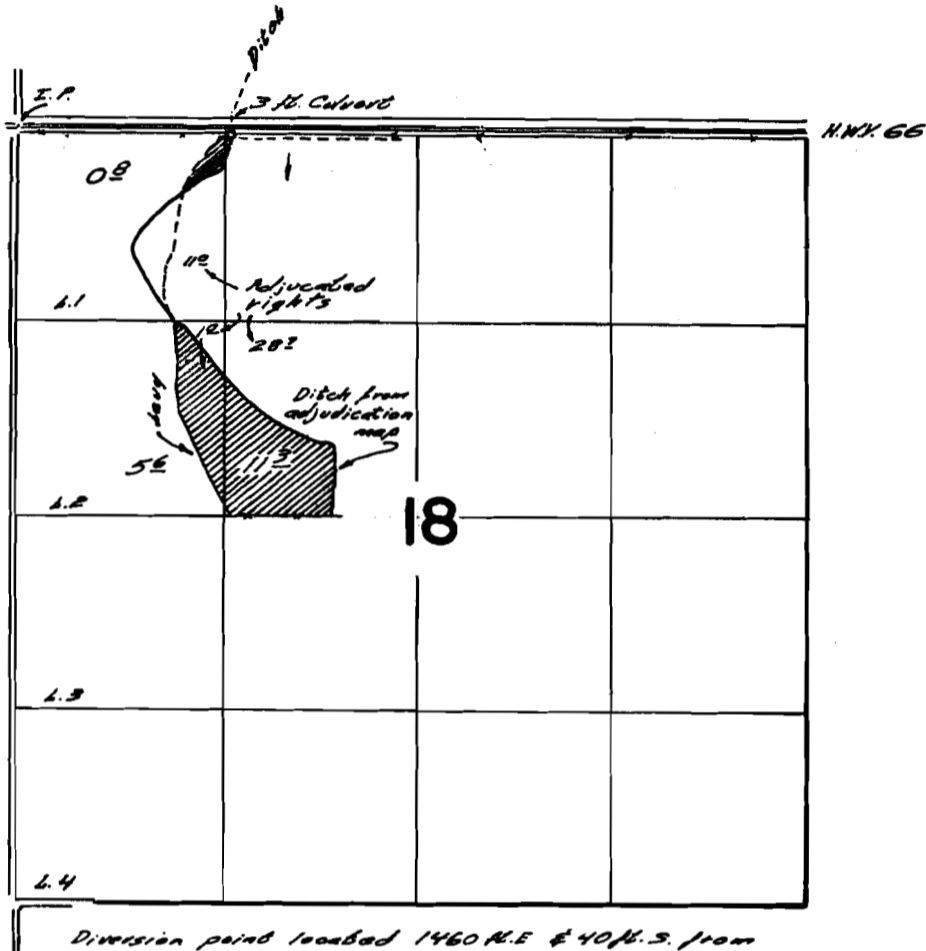


P# 27692
35154

T. 39 S. R. 20 E. W. M.



FINAL PROOF SURVEY UNDER

Application No. 33832 Permit No. 27692
IN NAME OF

R. T. Renney

Surveyed Aug. 31, 1967, by W. Ruppert

T.38S.R.20E.
T.39S.R.20E.

5

00

18

17

SLOUGH CHANNEL

LEEHRAN-BISHOP DITCH

SLOUGH CHANNEL

THOMAS CREEK

Artificial Channel

Improved & Relocated Channel of

Diversion Point

Application No.
33832

SKETCH MAP PREPARED BY THE STATE ENGINEER OF
OREGON FROM AERIAL PHOTOGRAPHS DATED 1954
AND FROM MAP ACCOMPANYING APPLICATION NUMBER
33832
JANUARY 1962