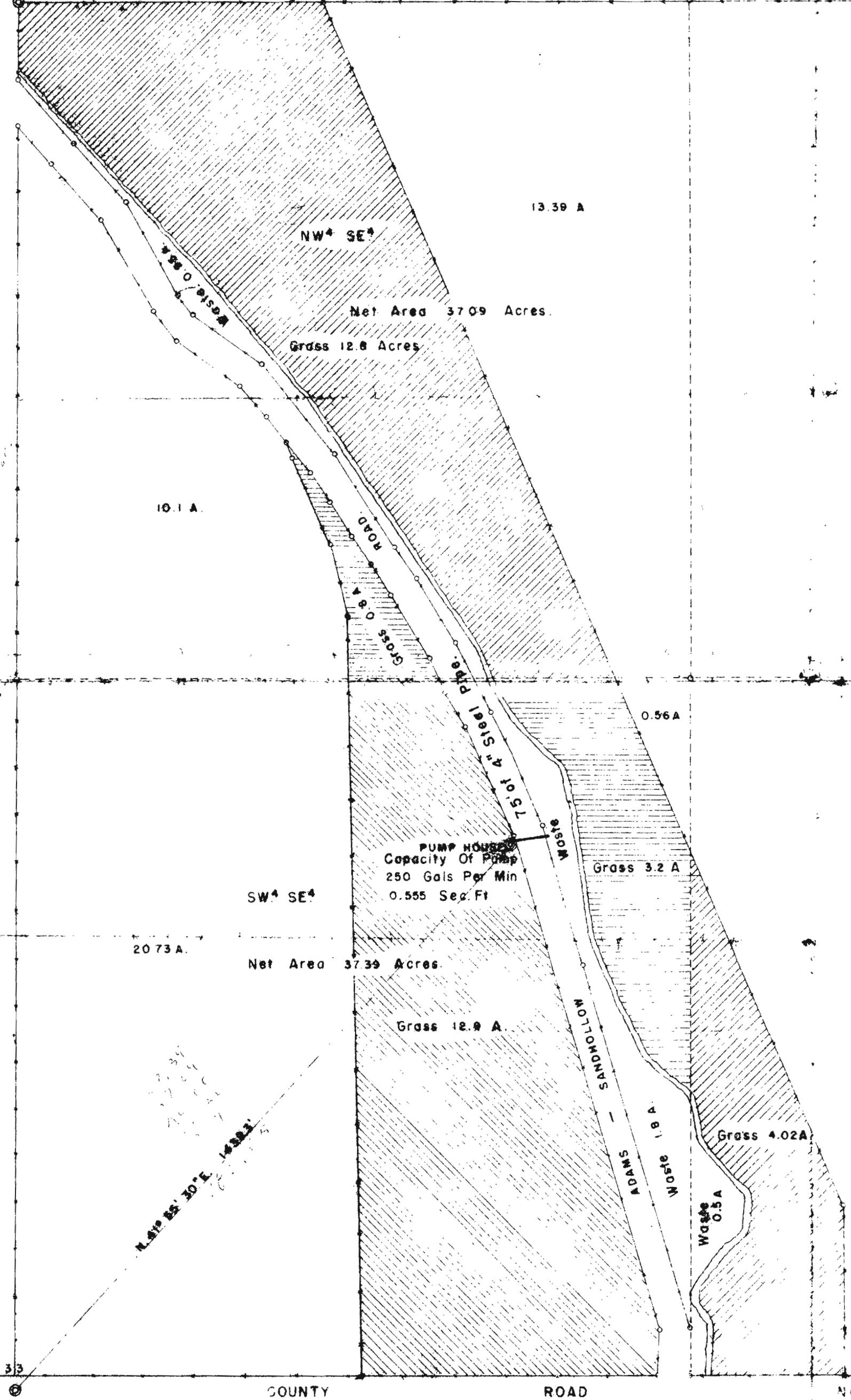


5-9779

1/4 Cor



NE<sup>4</sup> SE<sup>4</sup>

40 Acres

SE<sup>4</sup> SE<sup>4</sup>

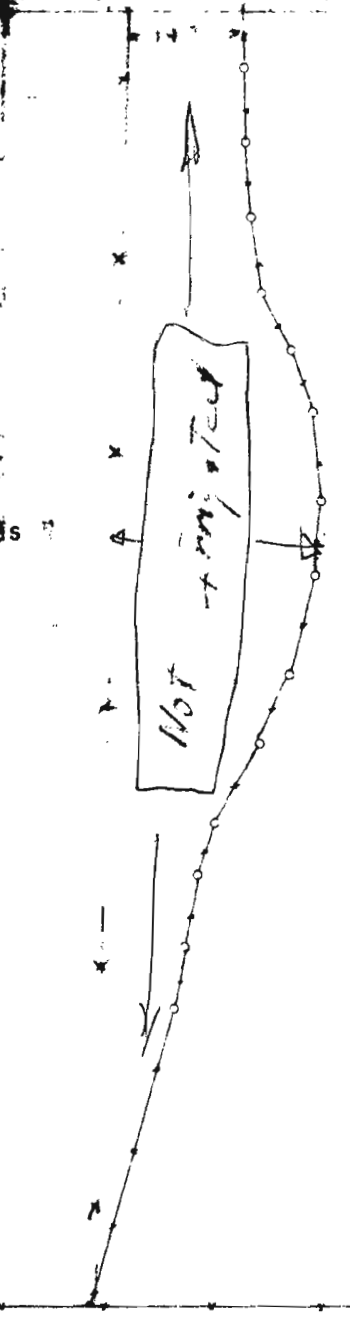
Net Area 40.36 Acres

I, F B Hayes, County Surveyor for Umatilla County,  
do hereby certify that this map was made from notes taken  
during an actual survey made by me on September the 5th  
1953; that the monument or 1/4 corner was destroyed and  
and that I relocated said corner and drove a 1" I.P. the  
the top of which is 6" below the surface of the ground.  
The bearing of well from said 1/4 corner is N. 41° 55' 30" E.  
1439.3 feet. Total acres irrigatable 195.75

*F. B. Hayes*  
COUNTY SURVEYOR



*F. B. Hayes*



SW<sup>4</sup> SW<sup>4</sup> Sec. 34

Net Area	31.71 Acres
Waste	9.2 "
Total 1/4	40.91 "

Net area 29.1 acres

PLAT OF SURVEY  
FOR  
**L.L. ROGERS.**  
LOCATION OF DEEP WELL  
AND LAND TO BE IRRIGATED.  
LOCATED IN THE SE<sup>4</sup> OF SECTION 33  
T. 4 N., R. 34 E. W.M.  
Scale 1" = 200'

U-682; G-2  
L-619; G-2

COUNTY

ROAD

855