

MAP

Accompanying application for permit
to appropriate water from
HENRY CREEK.

Scale: 2 in. = 1 mi.

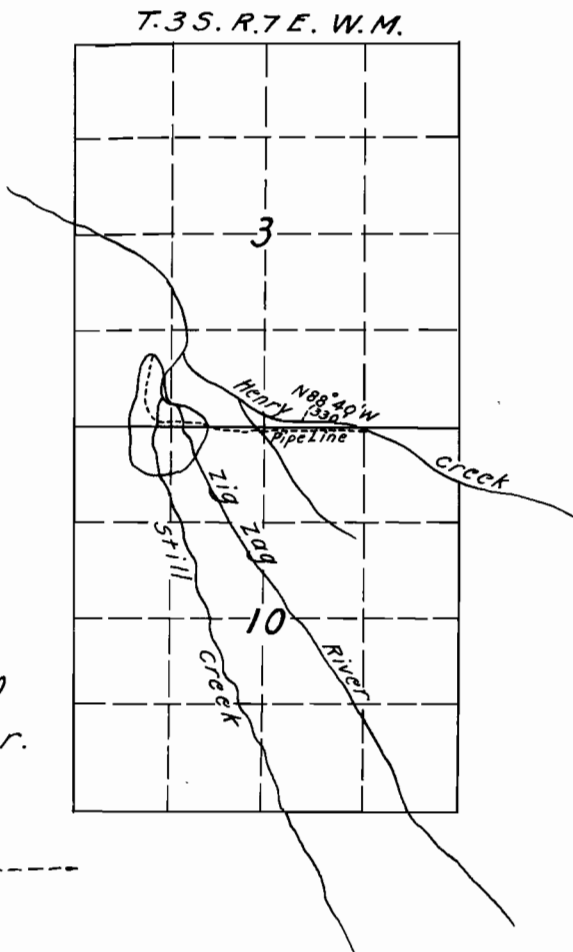
I, W.M.H. Woodward of Portland, Oregon,
do hereby certify that this map was made
from notes taken during an actual survey
made by me on April 23, 1921, and that it cor-
rectly represents the works described in
the accompanying application, together with
the location of streams and other ditches in
the immediate vicinity.

W.M.H. Woodward
Registered Professional Engineer.

Oregon No. 1173

May 8, 1920

Date of Registration.



Superceded

W.M.H. Woodward
Professional Engineer
No. 1173
May 8, 1920

5058