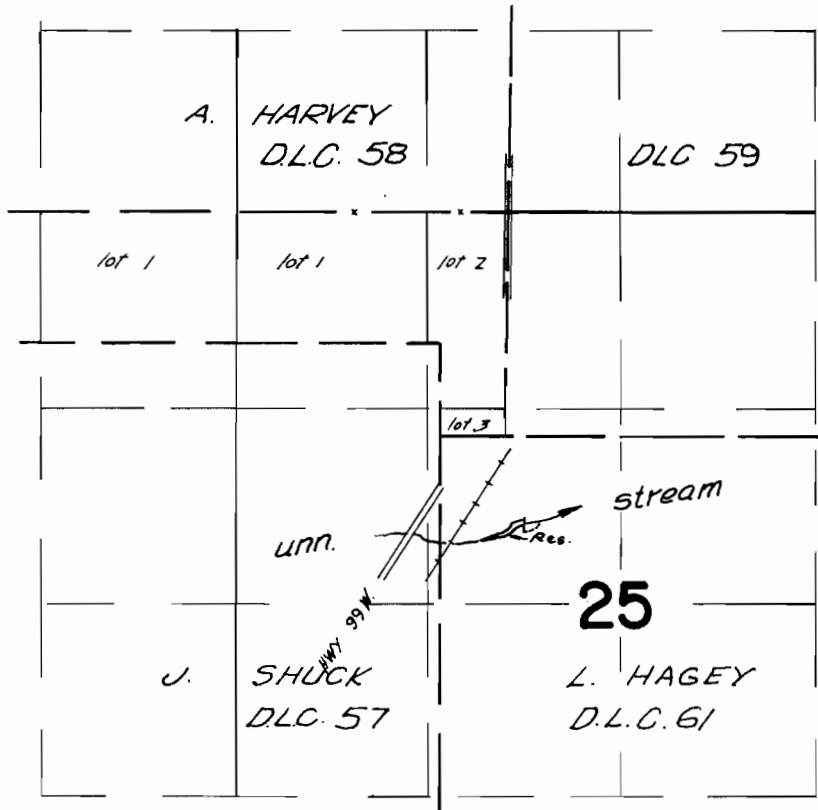


# T.3S. R.3W. W.M.



div pt. located 2140 ft S. and 120 ft E. from  
the S.E. corner of A. Harvey D.L.C. # 58

## FINAL PROOF SURVEY UNDER

Application No. <sup>R-41834</sup> 41971 Permit No. <sup>R-4685</sup> 31045  
IN NAME OF

WILLIAM T. HARDING

Surveyed March 30, 1967, by V. Garner