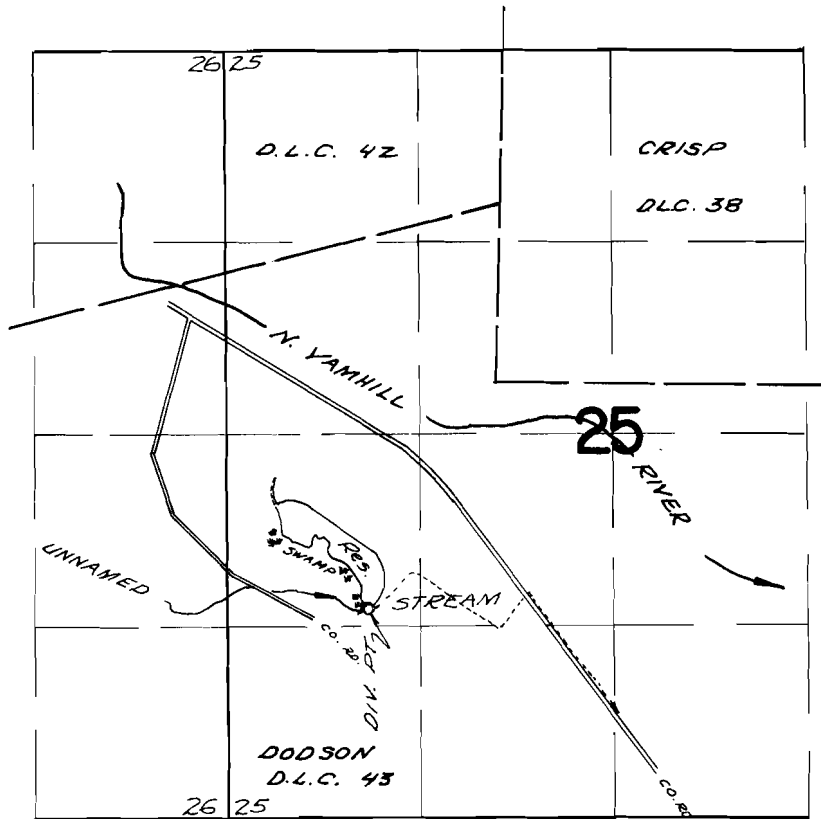


T. 2S. R. 5W. W.M.



Div. Pt. located 1560 ft. S. & 880 ft. W. from
the S.W. corner of CRISP D.L.C. # 38

FINAL PROOF SURVEY UNDER

Application No. *R-40409* 40410 Permit No. *R-4564* 30370
IN NAME OF

HARLEY S. BELT

Surveyed *Sept. 8 1967.* by *V. Garner*