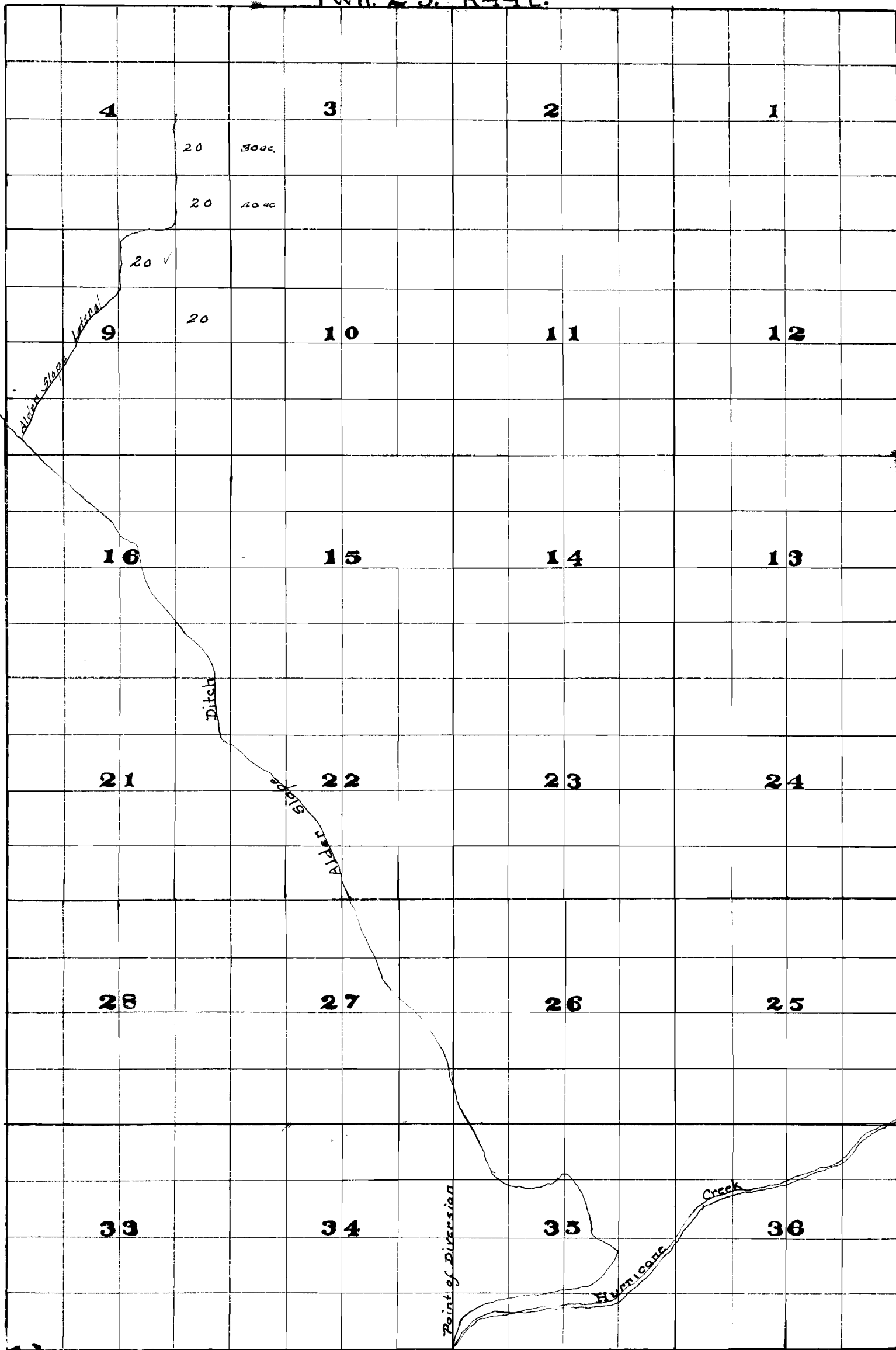


Twn. 2 S. R44E.



I, Geo. H. Brewster of Enterprise Oregon
do hereby certify that this map was made
from maps prepared for the Wallawa
River Adjudication and that it cor-
rectly shows the works shown thereon

Geo. H. Brewster

Permit No. 7571
 4805

George H. Brewster
 (Circular official stamp)