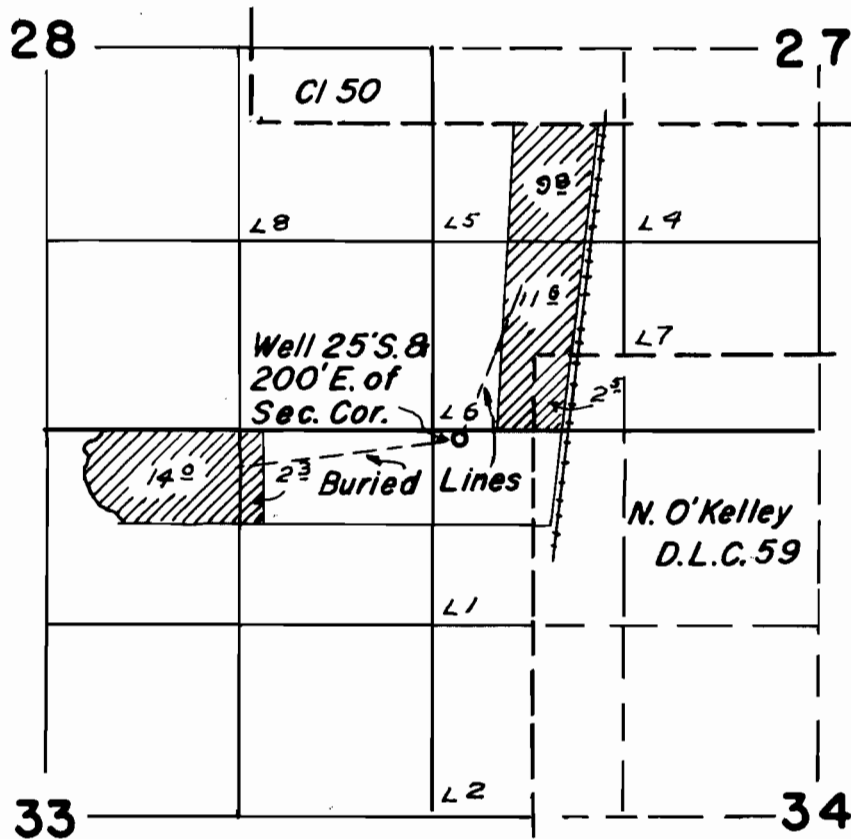


T. 13 S. R. 5 W. W. M.



FINAL PROOF SURVEY
UNDER

Application No. *G.1837* Permit No. *G-1732*
IN NAME OF

Muddy Creek Farms Inc.

Surveyed *July 27, 1964*, by *F. Siegmund*
Inspected *Sept. 26, 1968*, by *L. E. Gould*