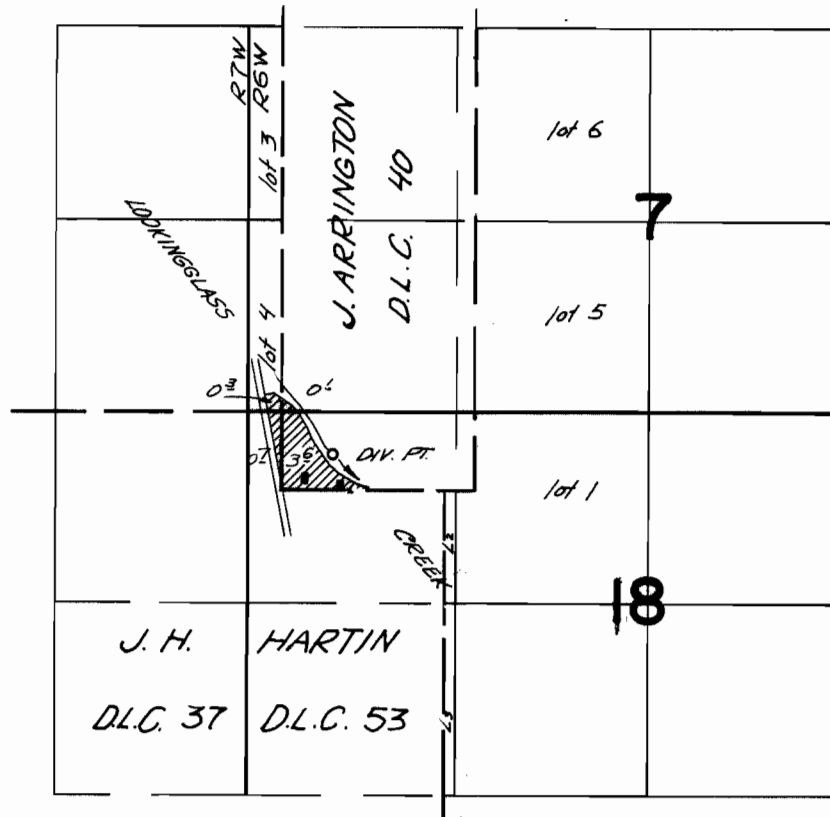


T.28S. R.6&7W. W.M.



DIV. PT. LOCATED 240 FT. N. & 350 FT. E. FROM THE SW CORNER OF J. ARRINGTON D.L.C. 40

FINAL PROOF SURVEY UNDER

Application No. 3901B Permit No. 29063
IN NAME OF

CLIFFORD BOLING

Surveyed April 24 19.67. by V. Garner