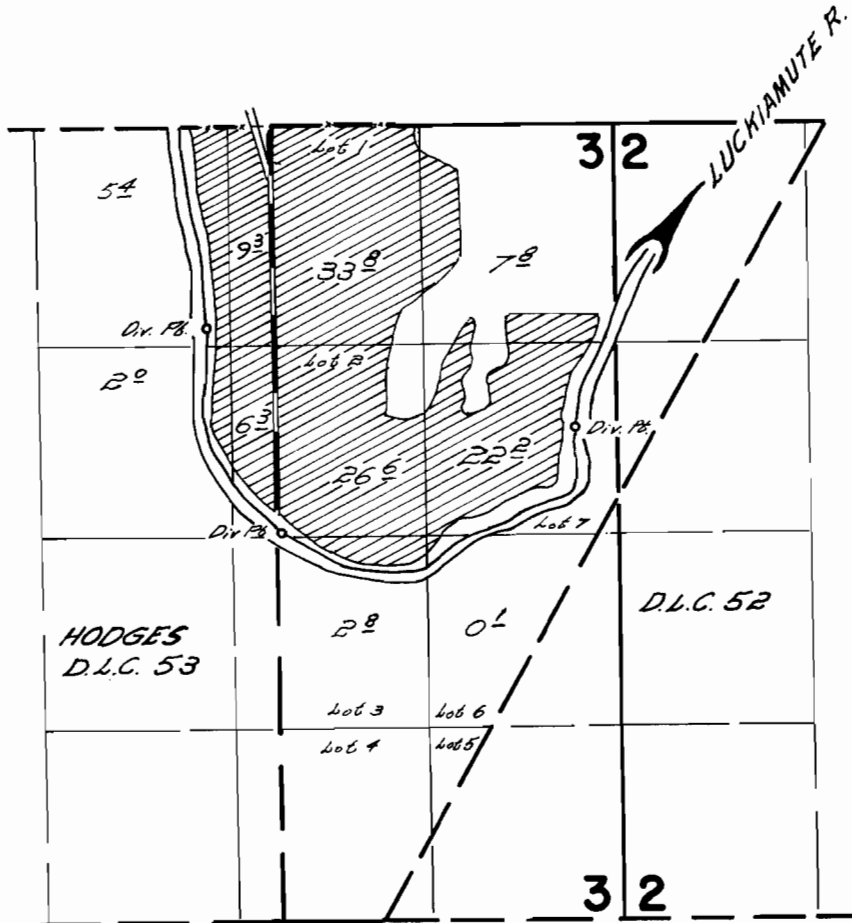


T.10S. R.4W. W.M.



DIVERSION POINTS LOCATED 1380 FT. S. & 160 FT. W. ALL FROM N.E.  
 2800 FT. S. & 20 FT. E. COR. D.L.C. 53  
 2080 FT. S. & 2050 FT. E.

**FINAL PROOF SURVEY**  
 UNDER

Application No. 38618 Permit No. 28749  
 IN NAME OF

LYON & CAMPBELL

Surveyed August 12 1968, by W.J. Fluppert