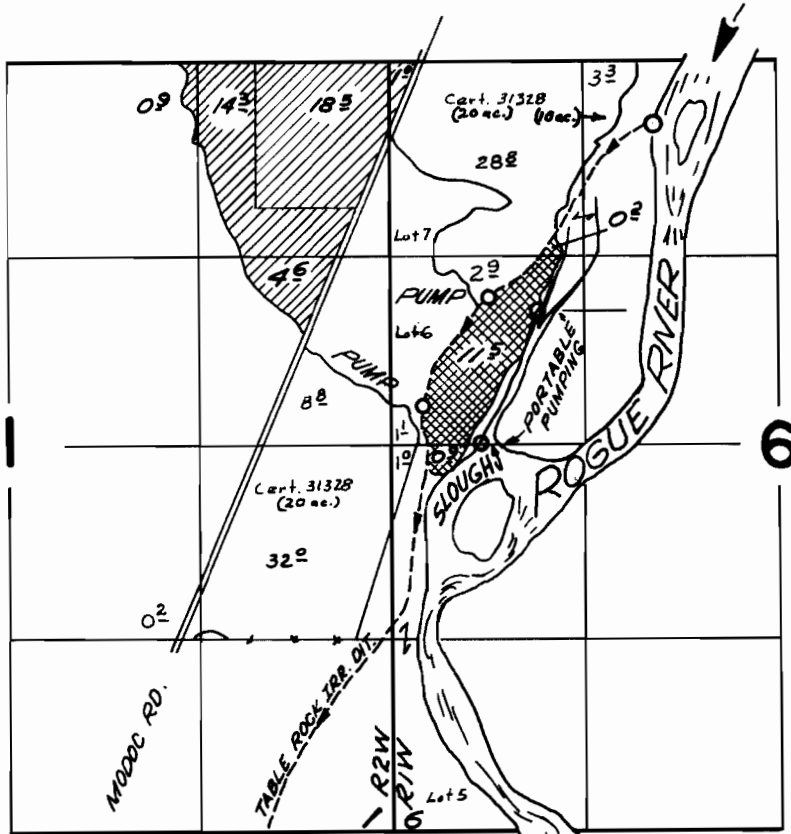




T. 36S. R. 18 & 2W. W.M. :



32766 }
 25635 } ROGUE R.  Div. Pt. located 420 ft. S. & 1810 ft. E.
 30468 } from the N.W. cor. Section 6
 30468 SLOUGH  Portable Pumping bet. points located
 1010 ft. E. & 1710 ft. S. and 610 ft. E. & 2630 ft. S.
 from the N.W. Cor. Sec. 6

FINAL PROOF SURVEY UNDER

25635 20107
 30468 23998
 Application No. 32766 Permit No. 25858
 IN NAME OF

RAY W. RYAN

Surveyed June 11, 1963, by C. BAKER
June 2, 1966 by V. GARNER