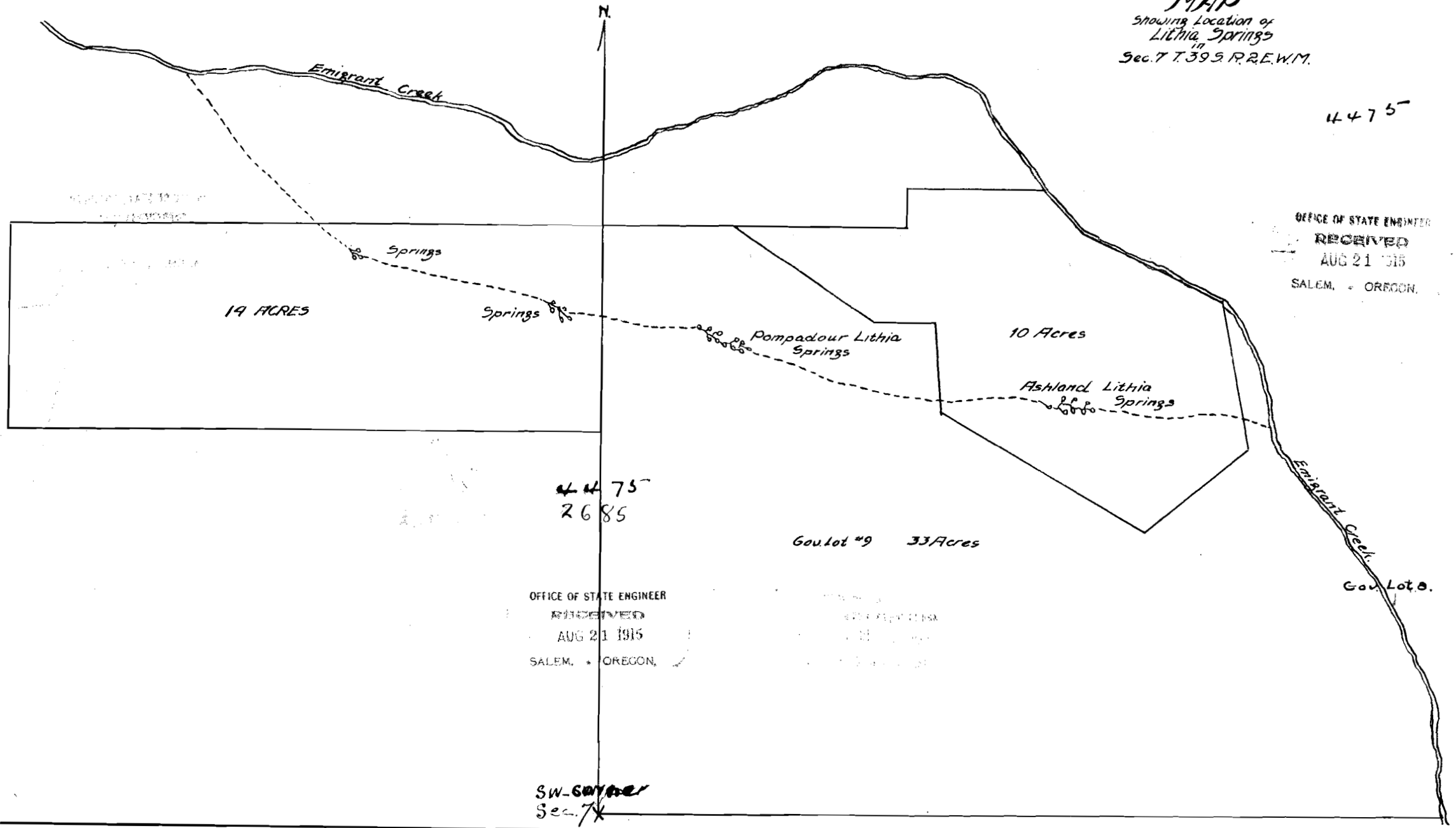


MAP
Showing Location of
Lithia Springs
in
Sec. 7 T. 39 S. R. 2 E. W. M.

4475



OFFICE OF STATE ENGINEER
RECEIVED
AUG 21 1915
SALEM, OREGON.

4475
2685

OFFICE OF STATE ENGINEER
RECEIVED
AUG 21 1915
SALEM, OREGON.

SW-~~34~~
Sec. 7

T 39-S-R-2 E. W. M.