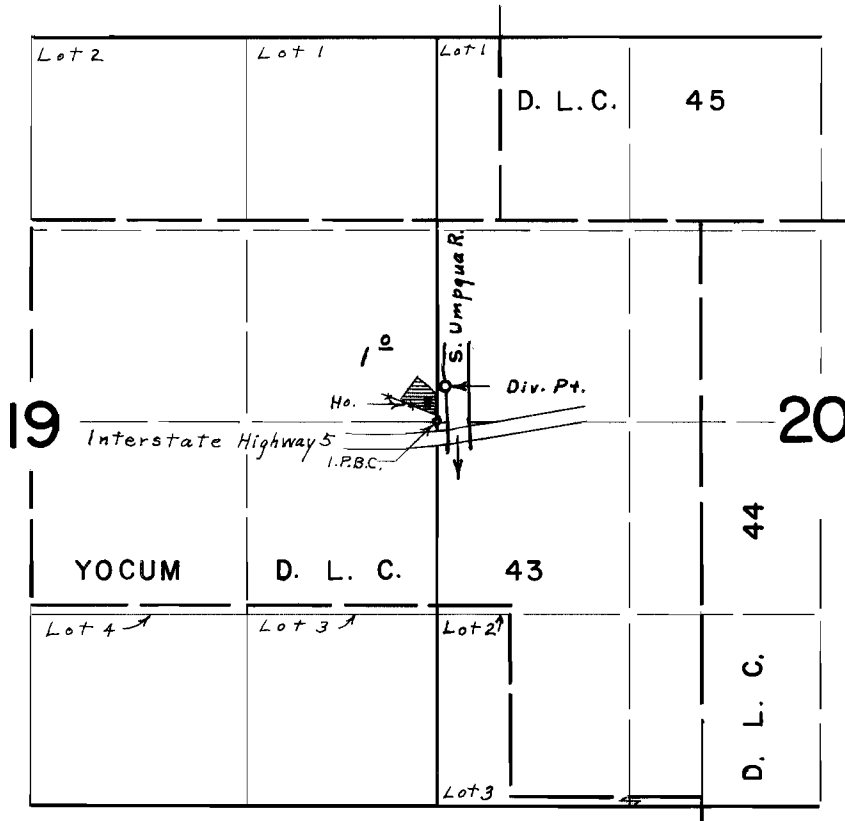


T. 30 S. R. 5 W. W. M.



Div. Pt. located 230' N. & 60' E. from E. & Corner Section 19

FINAL PROOF SURVEY UNDER

Application No. 33755 Permit No. 26653
IN NAME OF

ARTHUR &/OR GERTRUDE LeVASSEUR

Surveyed July 31, 1969, by L. E. Gould