

Schneider
Lumber Company
Sprinkling System Water
Supply.

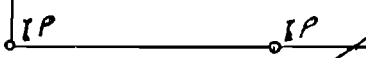
This Map Based on Survey
Nos 7815 & 7995 By
Bert Udel

Scale 1"=400'

Pumpsite Lies in The
NE; SE; Section 36
At a point 3198.2' South
& 1179.0' East of
The NW Cor of Alexander
Kirk DLC No. 37

T.J. Howard

Calapooy a River



City of Brownsville



Alexander Kirk DLC
Elias Walter DLC
6907.4266 side .9



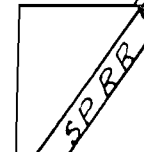
Section 36
Township 135 Range 3W

State Highway

Section 1
Township 14S Range 3W Fire Protection
Schneider Lumber Co. Area

G Isom

Reservoir Lies in NE; NW Section 1
At a point 5622.3' S & 1015.4' W of
The NW Cor of Alexander Kirk DLC 37



Log Deck Area

SE Cor. Elias Walter DLC

Application No. 41588, R-41587
Permit No. 31649, R-4686

Schneider Lumber Co.

Sprinkling Reservoir

NE, NW Section 1 T14S R. 3W. W.M.

Depth

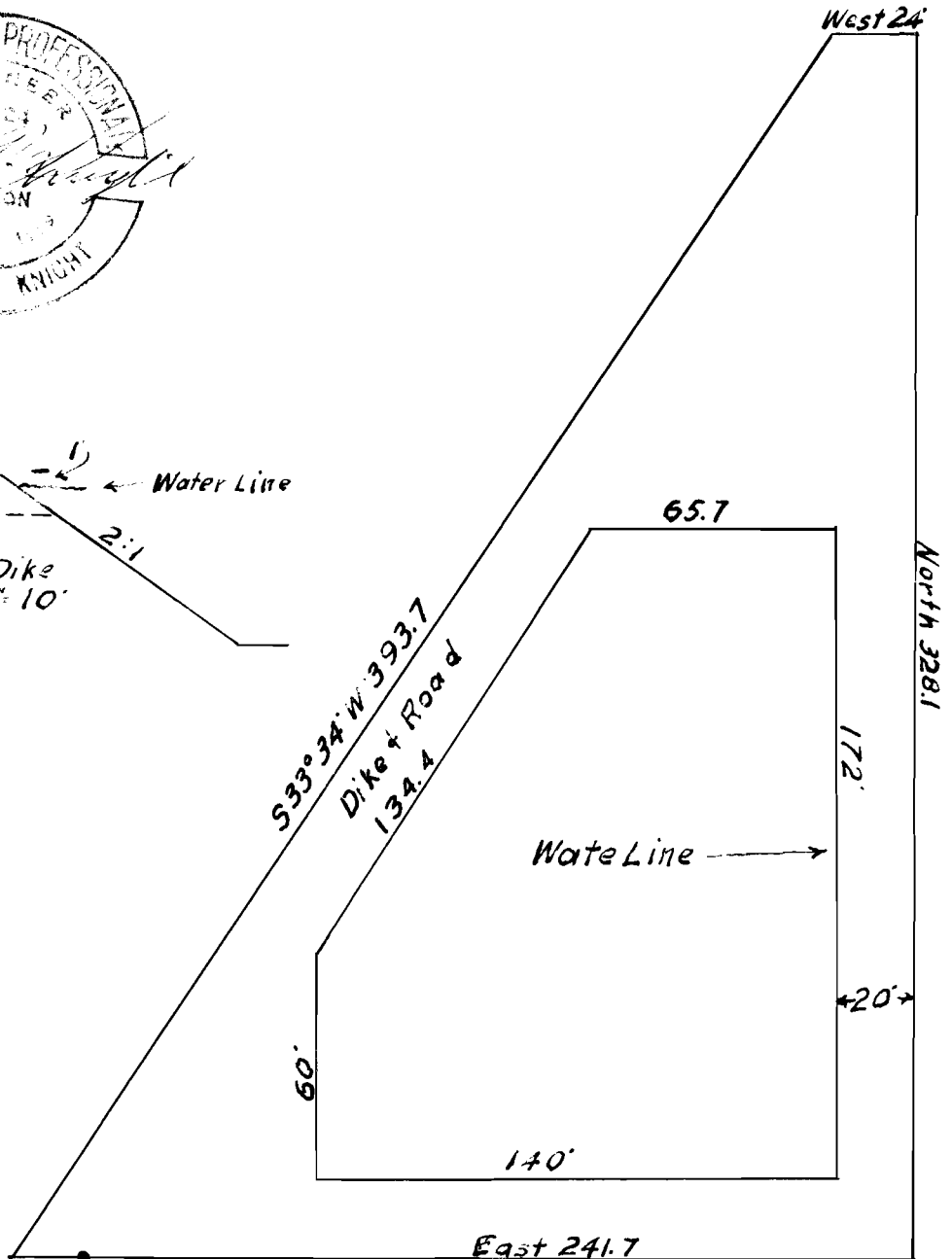
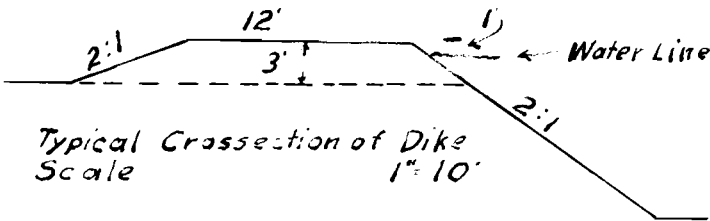
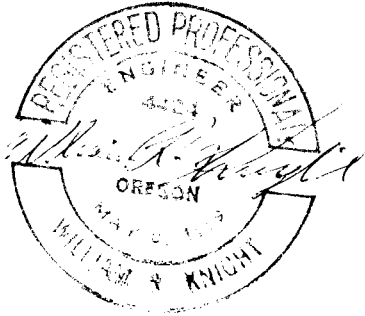
9'

Volume

3.1 Acre FT.

Scale

1" = 50'



Point 5622.3 S + 1015.4 W of
The NW Cor of Alexander Kirk DLC.

RECEIVED
NOV 2 1965
STATE ENGINEER
SALEM, OREGON

RECEIVED
NOV 5 1965
STATE ENGINEER
SALEM, OREGON

Application No. 41588
Page No.