

STATE of OREGON } s.s.
 COUNTY of KLAMATH }

I, Don J. Zumwalt, being first duly sworn, depose and say that I surveyed and plotted the Supplemental Plat of the City of Malin, Klamath County, Oregon, as described and plotted on the original and supplemental plats thereof on file in the County Clerk's office in Klamath Falls: That I made this survey and plat by order of and under the direction of the Mayor and Common Council of the City of Malin for the purpose of establishing monuments from which to make future surveys. Said monuments are shown on the plat thus: \odot , and are copper pins set in concrete.

Don J. Zumwalt
 Subscribed and sworn to before me this 17th day of May, 1939.

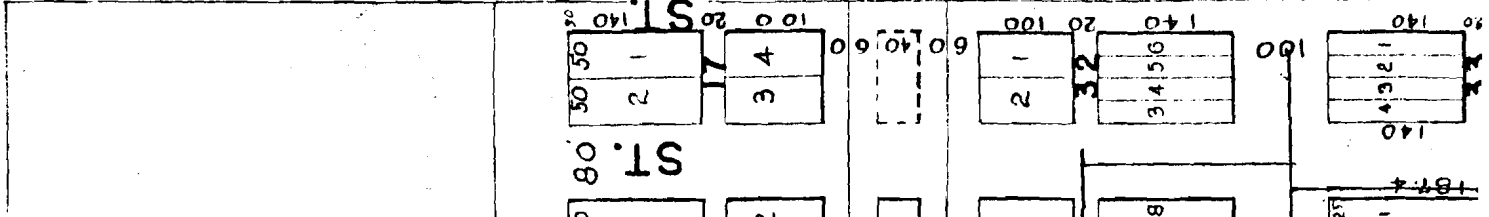
Joe Babcock
 Notary Public for Oregon
 My commission expires Mar. 24, 1943



STATE of OREGON } s.s.
 COUNTY of KLAMATH }

Be it remembered that on the 6 day of June, 1939, the Common Council of the City of Malin, Oregon, in session assembled, duly created and passed a resolution having for its object the establishment of the street lines of said City of Malin by a supplemental survey, and directing Don J. Zumwalt to make the necessary survey and plat hereto annexed; and the report of Don J. Zumwalt of such survey together with the plat thereof hereto annexed, having been duly presented to the Common Council of said city on the 6 day of June, 1939, for their consideration and approval, and such survey and supplemental plat having been duly considered and approved by the Common Council in session assembled, and the Mayor and City Clerk having been duly empowered by the Common Council to evidence in writing such approval, in accordance with the terms of resolution number

This is therefore information to all whom it may concern that said Supplemental Plat is



the official plat of the City of Malin, Malin, Oregon, showing the source of information as to the survey of Lots, Blocks, Streets and all things pertaining to said City.

In Testimony Whereof I have hereunto signed my name in my official capacity of Mayor of the City of Malin.

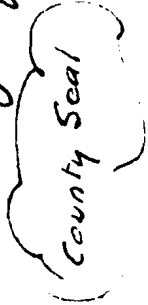
Attest: Irving E. Capet
City Clerk

Filed for record this 5 day of July, 1939.

Mac K. Short
County Clerk

By J. D. Case
Deputy

Approved this 1 day of July, 1939.



U. E. Reeder County Judge

Wm. G. Chase Commissioner

_____, Commissioner

Approved this 30 day of June, 1939.

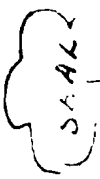
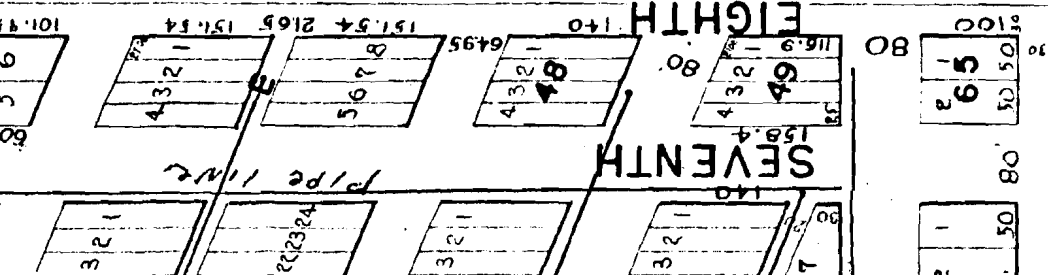
Frank J. Howard
County Surveyor

Approved this 30 day of June, 1939.

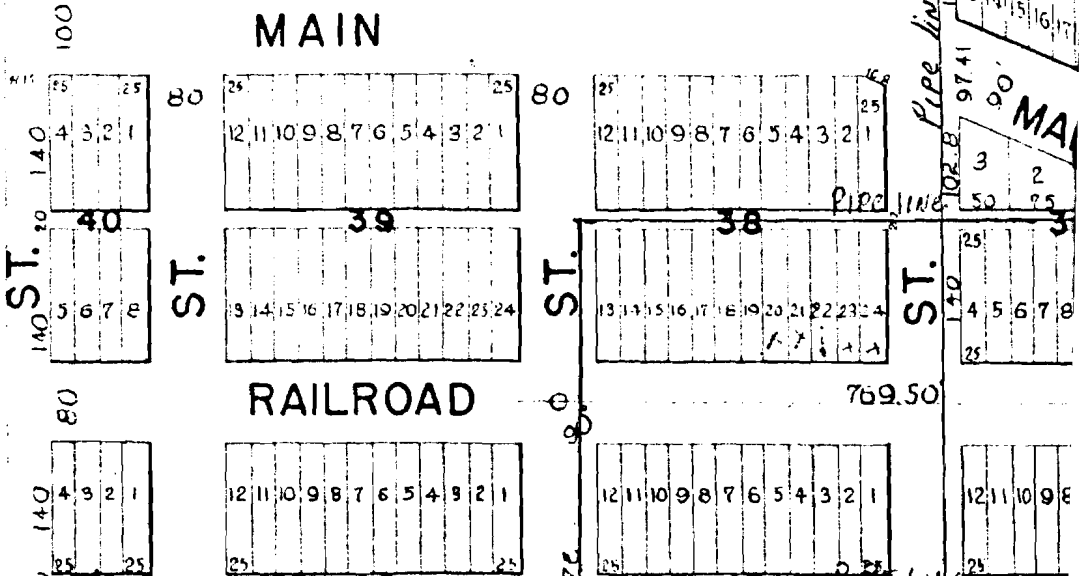
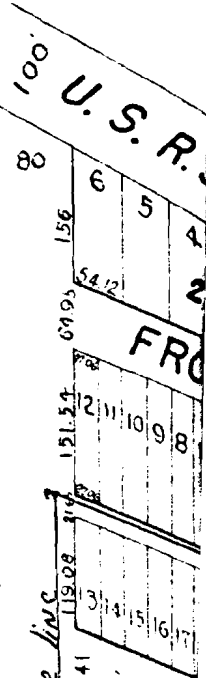
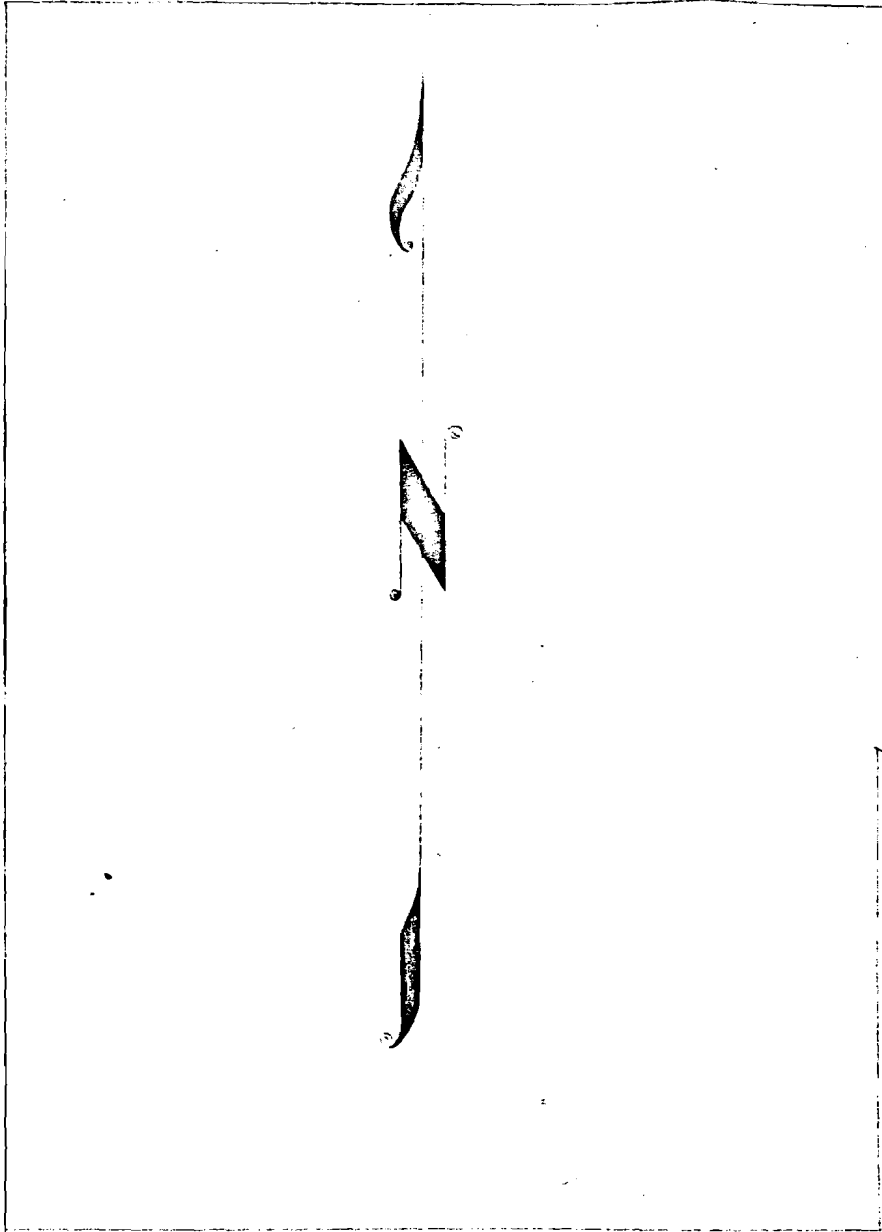
Chas. N. Mack
County Assessor
by Wm. W. Moore, Deputy

Application No. G-1167
Permit No. G-1167

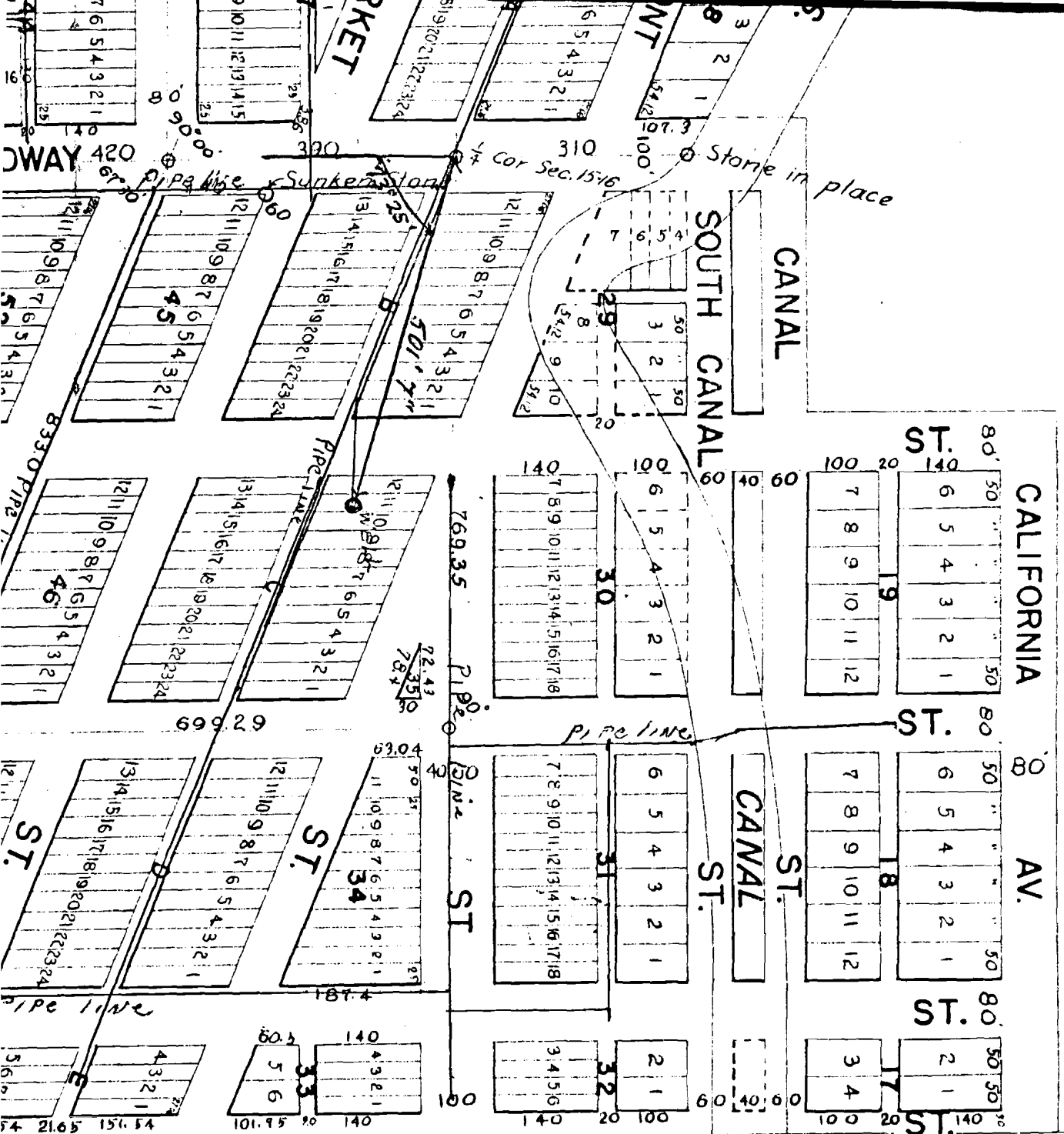
f. Zumwalt



SUP
 CIT
 KLAMA
 SCALE

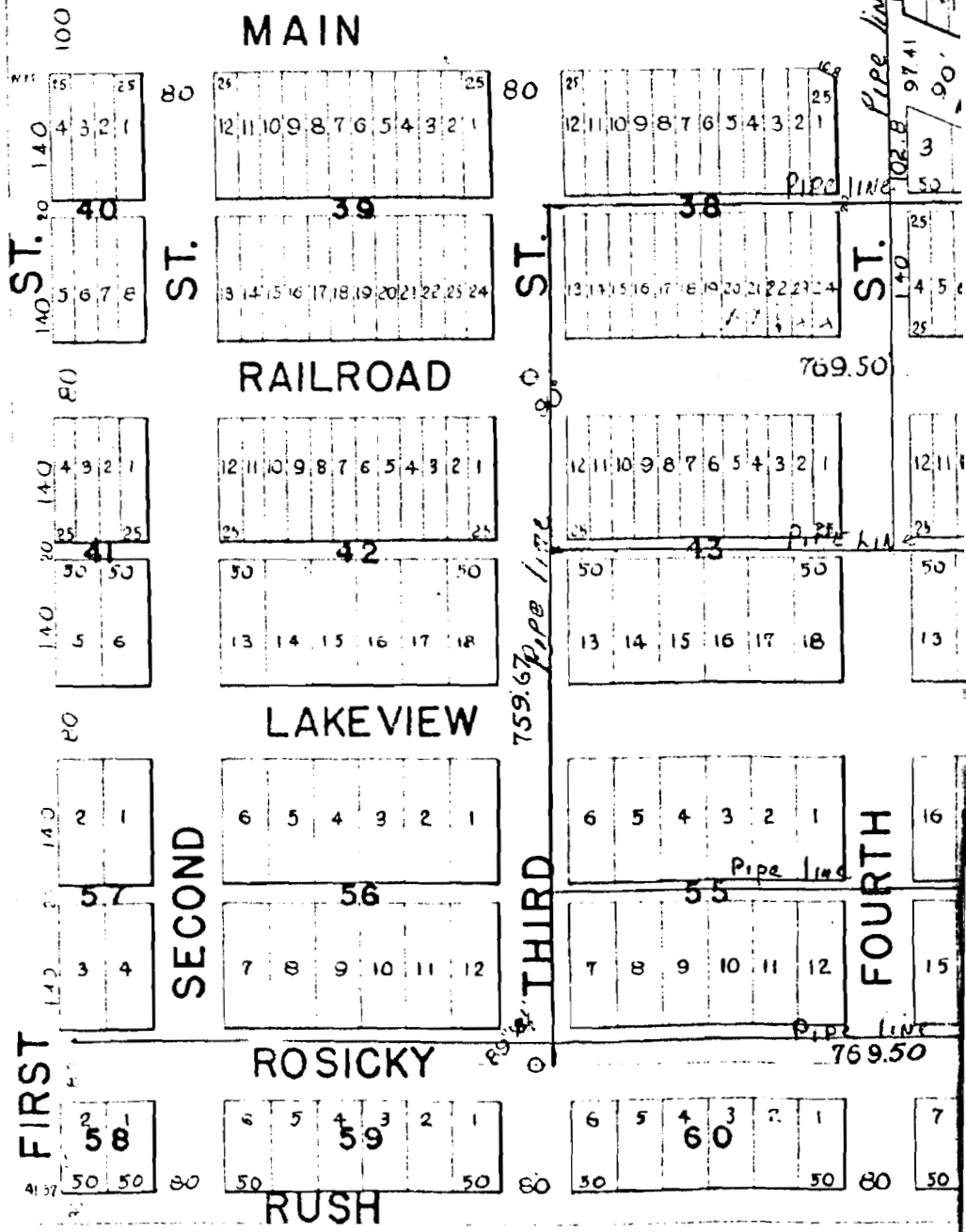


SUPPLEMENTAL PLAT
 OF
 CITY OF MALIN
 WASHINGTON COUNTY, OREGON
 200' DON J. ZUMWALT



ST
 CO
 Sup
 ted
 Fall
 and
 fro
 and

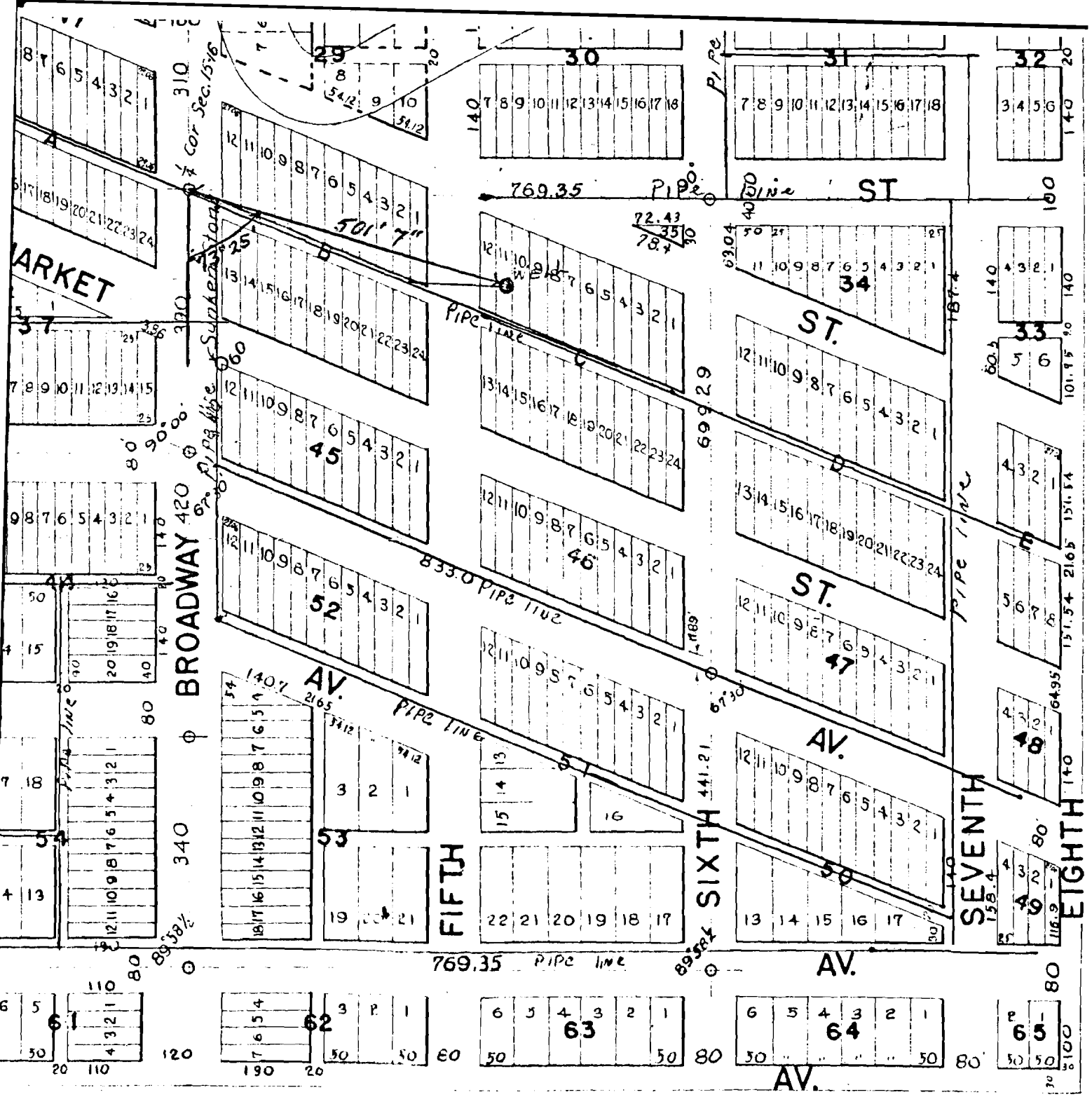
ST
 CC
 CH
 HA
 SU
 the
 of
 SU
 M
 en
 W
 H
 SC
 SC
 M
 A



This is to cert
of the City of M
at date of filling

SEAL

Y



fy that this is the copy of the Supplemental Plat
 xlin, filed July 5, 1939 which accompanied same
 . Mac K. Short

County Clerk
 By J. H. Carr, Deputy

Don J. Zumwalt