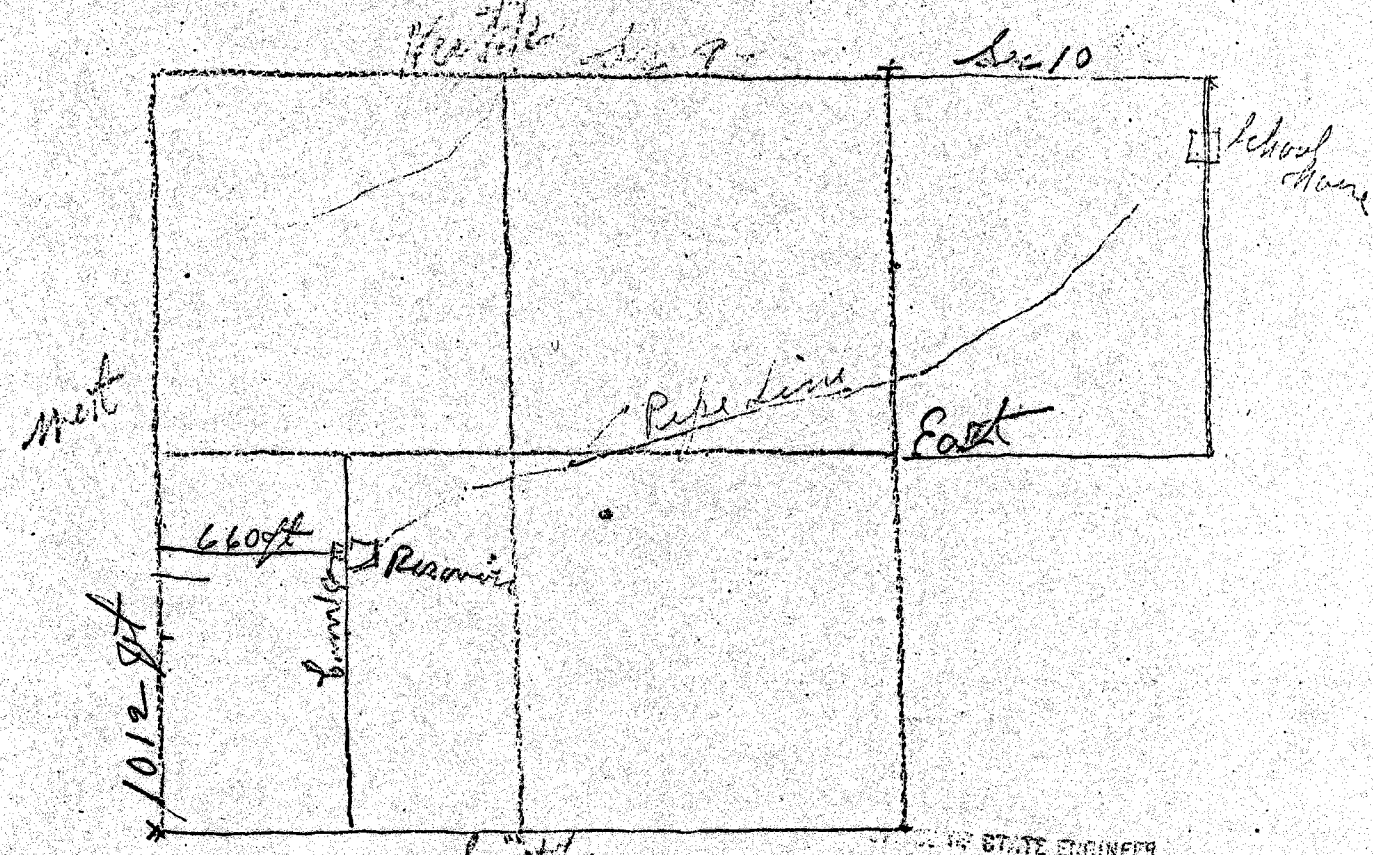


North East 1/4 of Sec 9 - T. 2 N., R. 10 - E.



Southwest corner of N. E. 1/4 - Sec 9

STATE ENGINEER
 RECEIVED
 DEC 3 11 1913
 SELEM., OREGON

Send the charge to A. G. King Sect

Application No. 6362
 Permit No. 3967