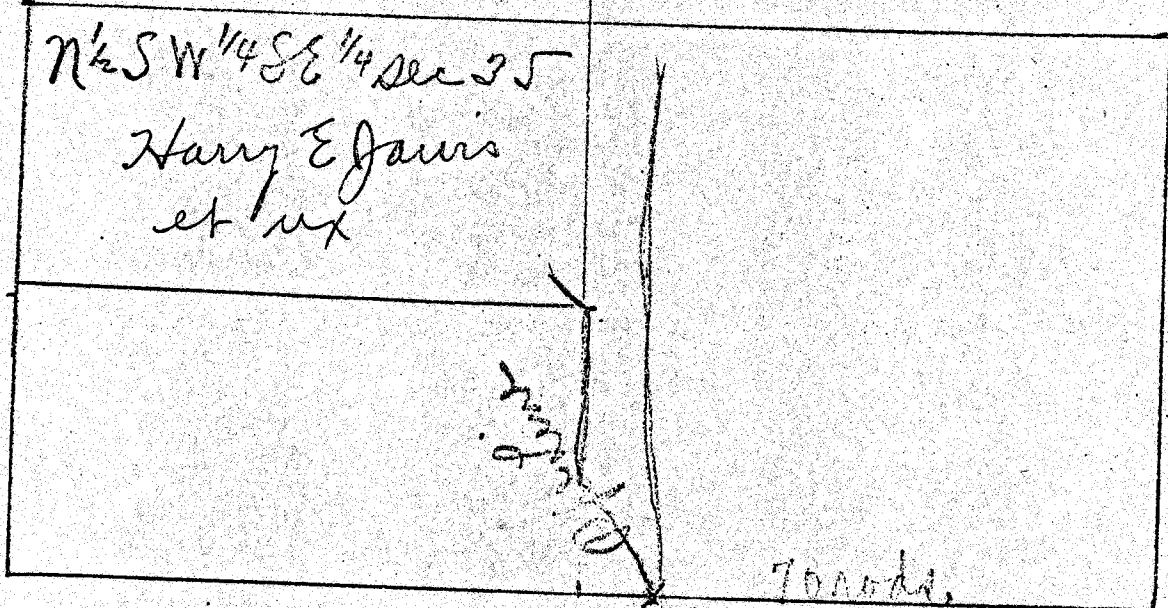


SE 1/4 Section 35, T2N, R10E, M.

W.



E.

N 1/2 SW 1/4 SE 1/4 Sec 35  
Harry E. Jarvis  
et ux

Sec  
36

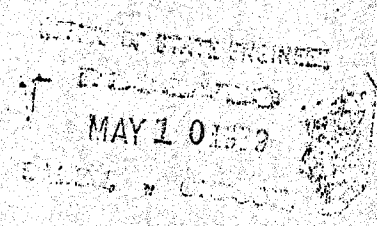
Towards  
S. Point of diversion

App' 6526  
Per 4075

Sec 2.

Sec I

T2N, R10E, M.



Application No. 6526