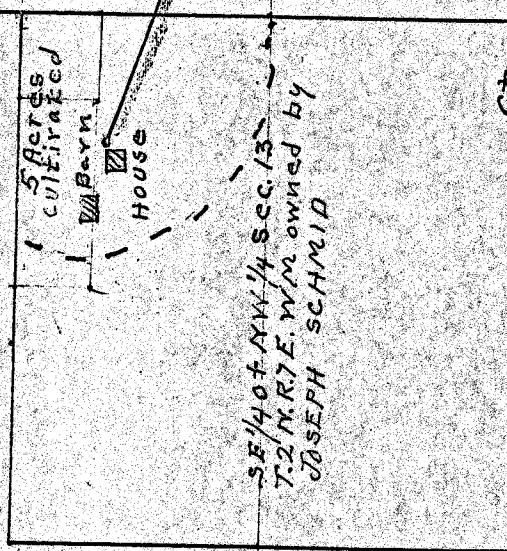


N. ↑

APPLICATION OF JOSEPH SCHMID  
CASCADE LOCKS, HOOD RIVER CO  
FEB. 28, 1920.  
SCALE - 500 FT. = 1"



SE 1/4 of NW 1/4 Sec. 13  
T. 2 N. R. 7 E. W. M. owned by  
JOSEPH SCHMID

3000 Ft. 1 1/2" Pipe - 200 Ft. head

East line of Section 13

Spring bears N. 20° W. 200 Ft.  
Fr 1/4 Sec. cor. on E. side of  
Sec. 13 T. 2 N. R. 7 E. W. M.

City - Sec 13

1 M 5 15

Application No. 7114  
Permit No. 4457