

1.3N, R.28E, W.14
1.3N, R.29E, W.14

Approach Well No. 2
Location

PARKING

ING

1250

70

1250

6

160

60

W Line
No. 1

50

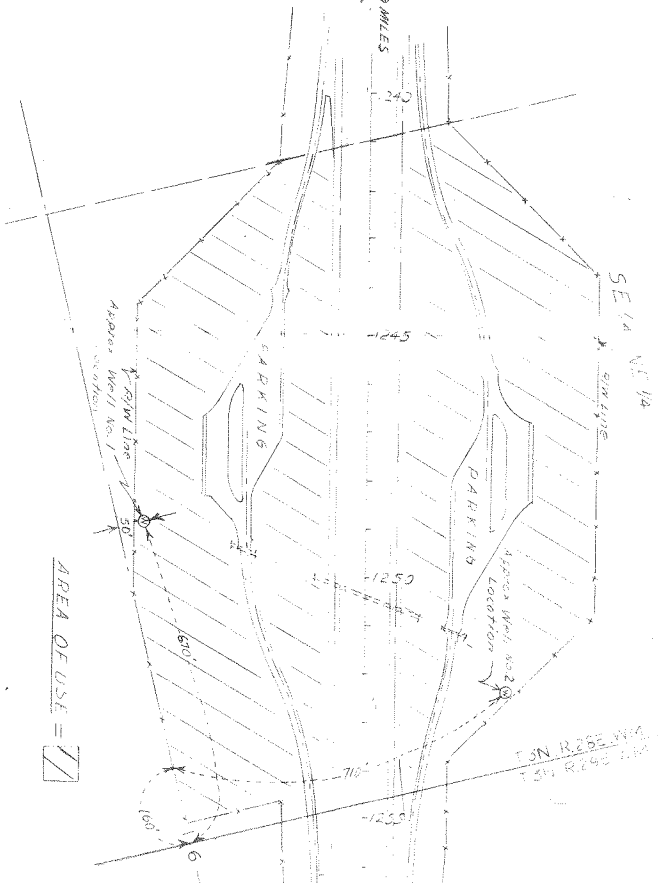
AREA OF USE = 

SPANFIELD SAFETY REST AREA

CL. OREGON TRAIL HIGHWAY - UMATILLA CO.

ADDITIONAL No. G-355A

← HIGHWAY CO. LINE - 9 MILES →



AREA OF USE = 