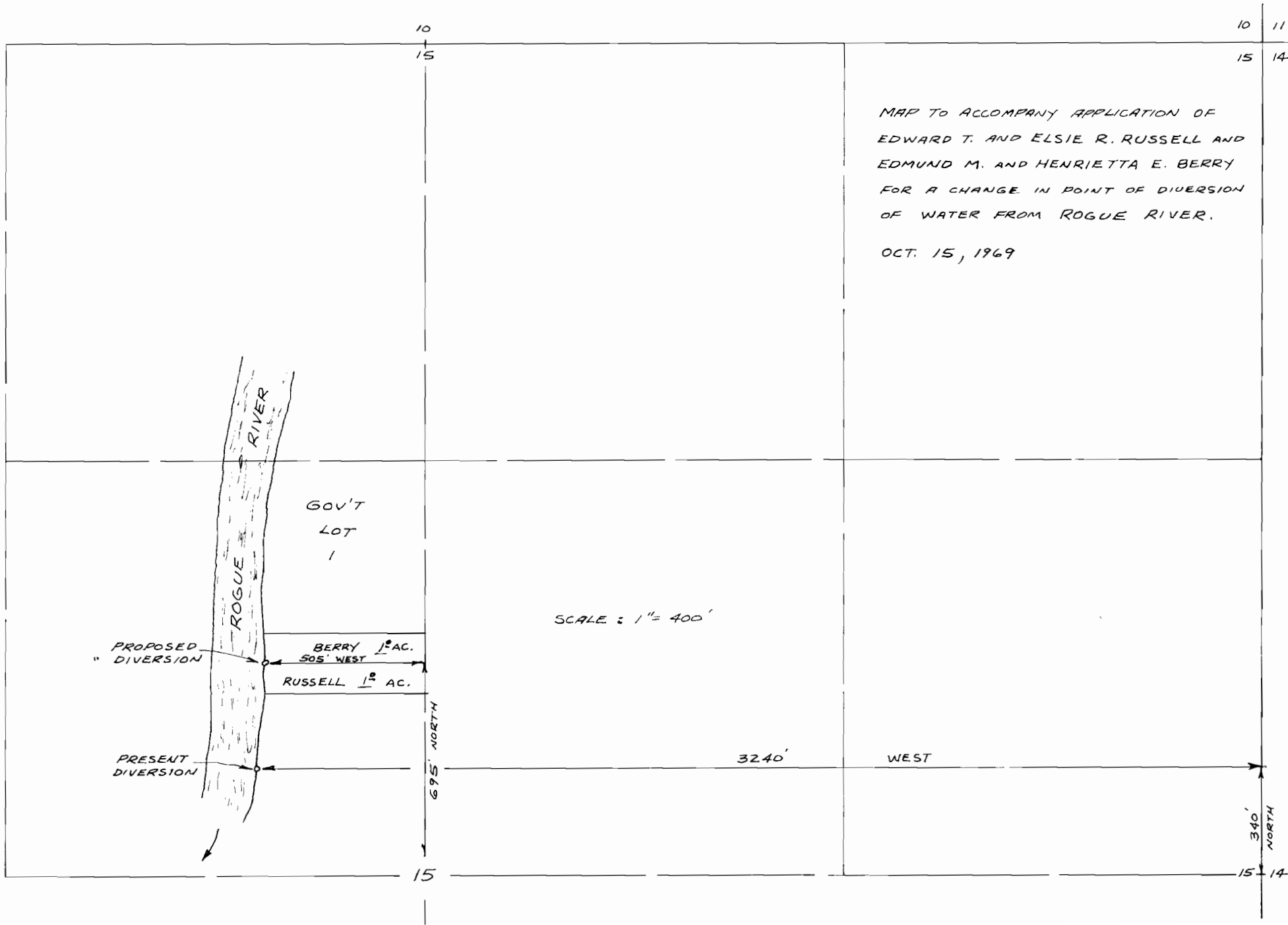


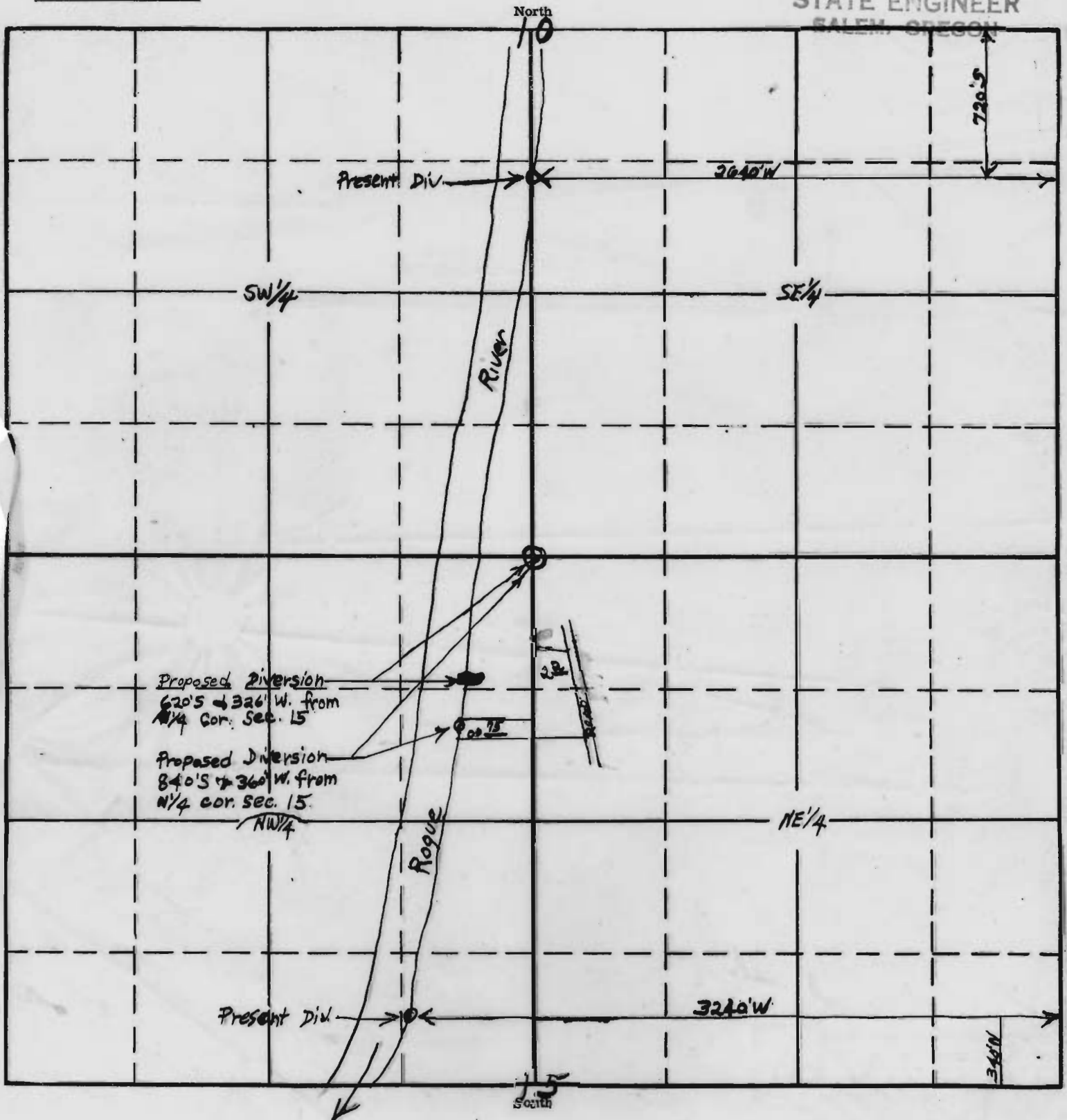
RECEIVED  
OCT 15 1969  
STATE ENGINEER  
DEPARTMENT

T. 34 S., R. 1 W. W.M.



TOWNSHIP 34 S, RANGE 1 W, W. M.

RECEIVED  
FEB 8 1962  
STATE ENGINEER  
SALEM, OREGON



(Scale) 8" = 1 mile

APPLICATION No.  
PERMIT No.

C-139