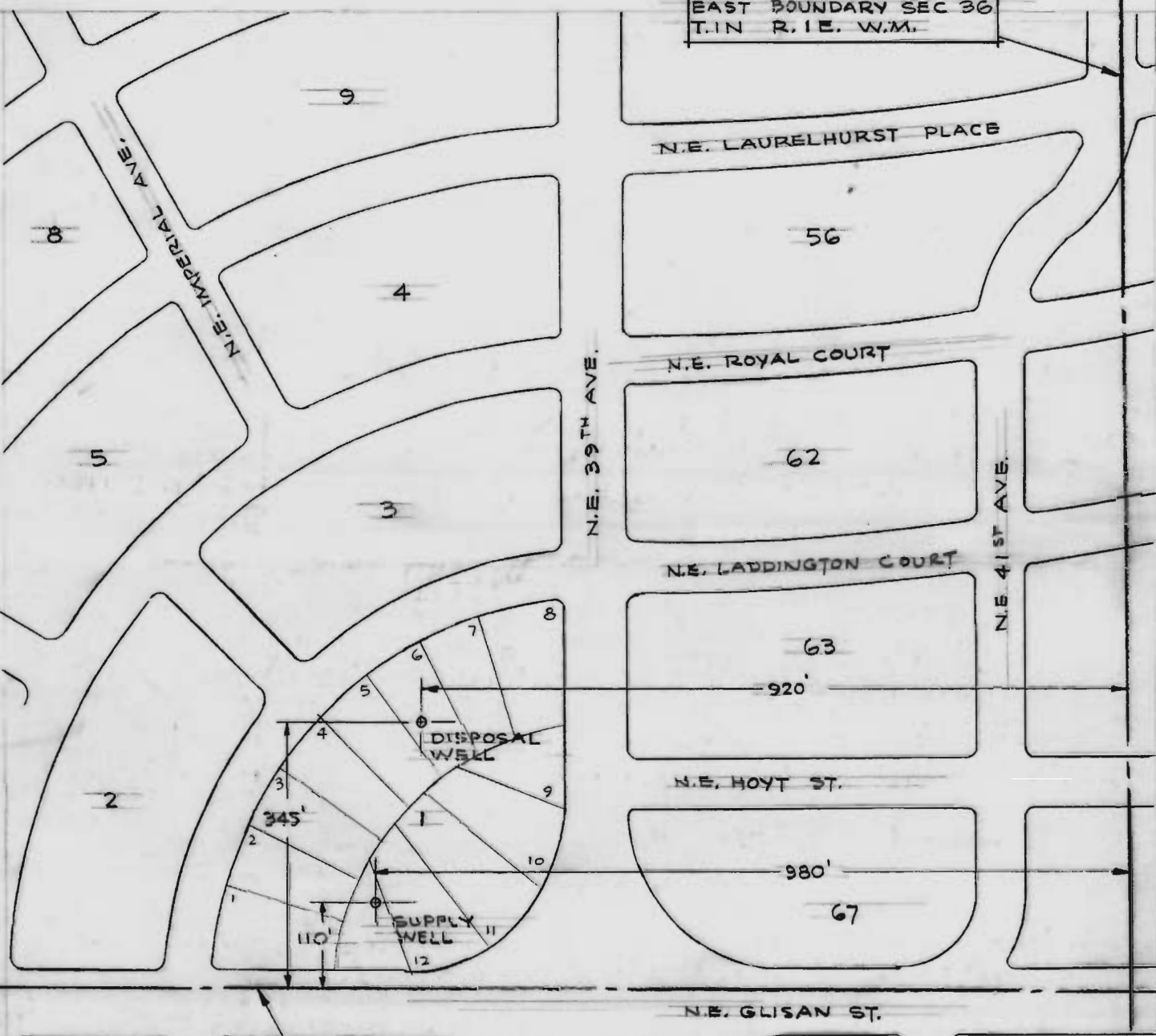



EAST BOUNDARY SEC 36
T.1N. R.1E. W.M.



CENTER SEC 36
T.1N. R.1E. W.M.

RECEIVED
 APR 22 1966
 STATE ENGINEER
 SALEM OREGON



Application No. *g-3392*
 Permit No. *g-3186*

RECEIVED
 FEB 21 1966
 STATE ENGINEER
 SALEM OREGON

NOTE :
 ALL DIMENSIONS SHOWN FOR LOCATING
 WELL ARE APPROXIMATE.

REGISTERED PROFESSIONAL
 ENGINEER
 3124
Robert E. Selberg
 OREGON
 NOV. 10, 1950
 ROBERT E. SELBERG

J. DONALD KROEKER
 AND ASSOCIATES
 CONSULTING ENGINEERS

MAP SHOWING WELL LOCATIONS
 ALL SAINTS CHURCH
 PORTLAND, OREGON
 SCALE : 1" = 200 FT
 DATE : FEB. 7, 1966
 REV : 3-18-66