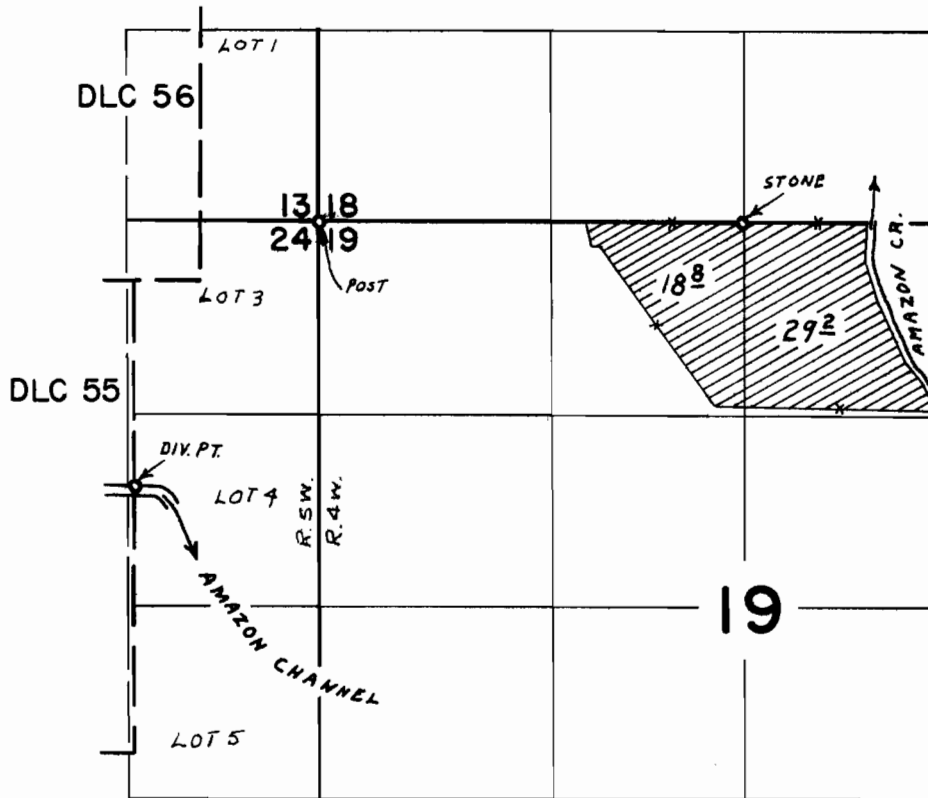


T.17S.R.5&4 W. W.M.



DIV. PT. LOC. 1820'S. & 1260' W. FROM NW COR. SEC. 24

FINAL PROOF SURVEY

UNDER

Application No. 42830 Permit No. 32011

IN FAVOR OF

GEORGE K. LOWE, HARRIET J. LOWE, & G. DAVID LOWE

SURVEYED OCT 8, 1970 BY G. BACA