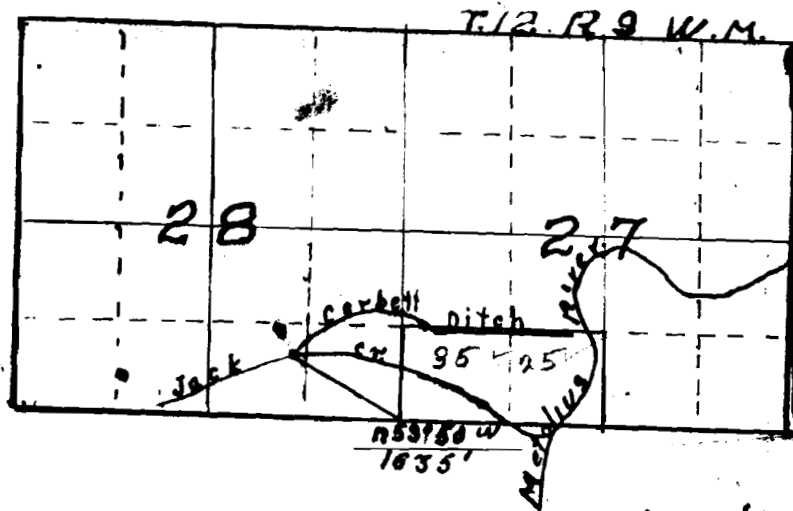


# CORBETT DITCH

I, Roy Rannells of Redmond Ore., do hereby certify that this was made from notes taken during an actual survey made by me on Sept. 26 1920 and it correctly represents the words in the accompanying application together with the location of streams and ditches in the immediate vicinity.

Roy Rannells  
Surveyor



OFFICE OF STATE ENGINEER  
RECEIVED  
OCT 13 1920  
SALEM, OREGON

Application No. 7180  
Permit No. 4816

C 3786

4816