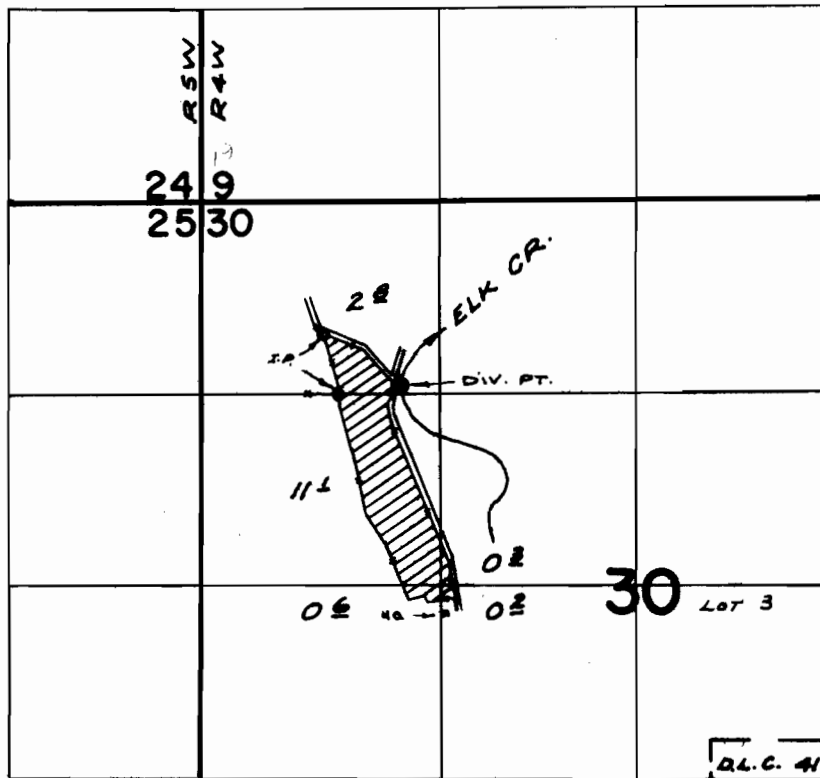


T.22S.R.4&5W.W.M.



DIV. PT. LOC: 70' N & 1370' E. FROM S.W. COR. NW 1/4 & NW 1/4 SEC. 30

FINAL PROOF SURVEY

UNDER

Application No. 41514 Permit No. 30979

IN NAME OF

GEORGE S. CRUIKSHANK

Surveyed JUNE 19, 1970, by R. MUCKEN