

MAP
 To Accompany Application
 of PACIFIC STATES LUMBER Co.
 to appropriate water

I. D. L. Buckingham, of Marshfield Oregon,
 hereby certify that this map was made from
 notes taken during an actual survey made by me
 July 27 1922 and that it correctly represents
 the works described in the accompanying application
 together with the location of the streams in the immediate
 vicinity

D. F. Buckingham

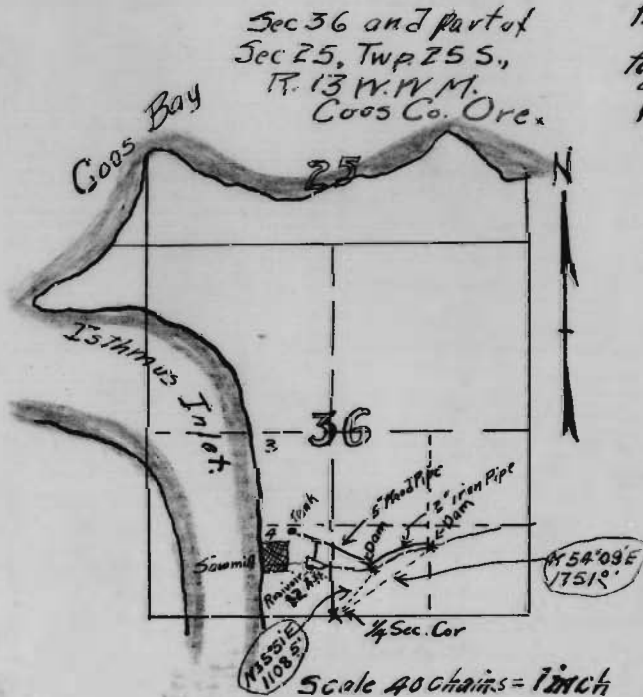
STATE ENGINEER
 RECEIVED

AUG 5 1922

SALEM, OREGON



D. F. Buckingham



Application No. 8556
 Permit No. 5577