

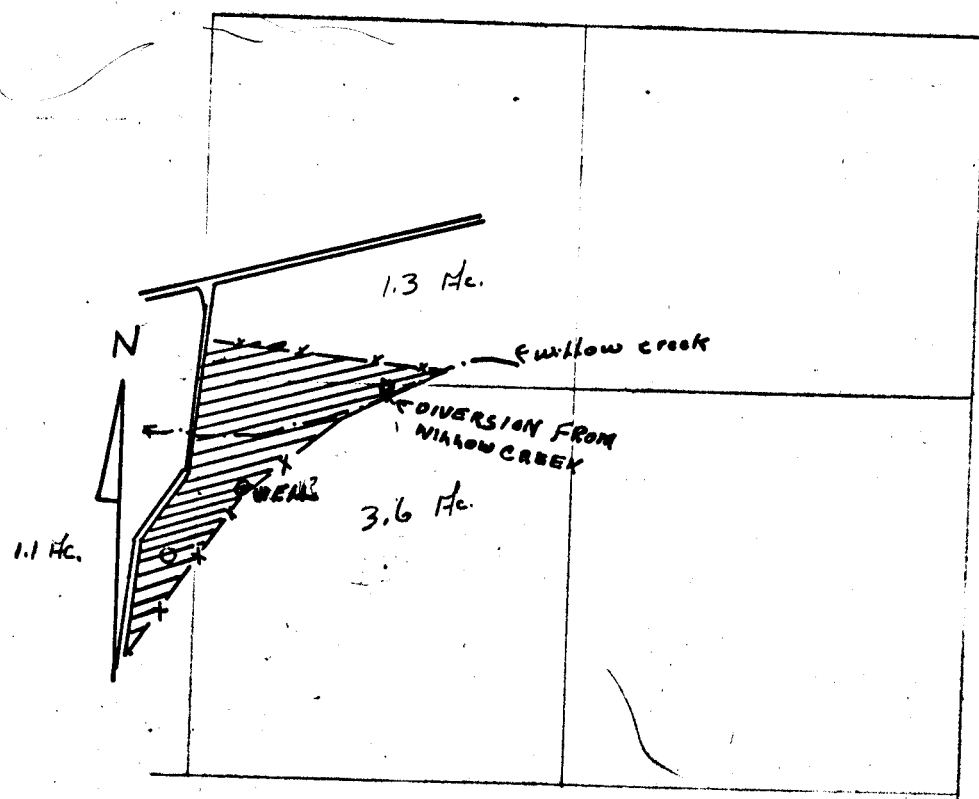
33465 1/1
38273

RECEIVED
AUG 13 1968
STATE ENGINEER
SALEM OREGON

Scale 8" = 1 mile
T.15 R.24 E.

1/6
12/7

RECEIVED
JUN 21 1968
STATE ENGINEER
SALEM OREGON



Well 2440
2700' West &
3200' south from NE
3010
corner of Sec. 12

PUMP IN CREEK 4000'
WEST & 2715' FROM NE
1970
SOUTH
CORNER OF SEC. 12

SEC. 12

S.W. $\frac{1}{4}$ OF N.E. $\frac{1}{4}$ 1.3 Ac.

N.W. $\frac{1}{4}$ OF S.E. $\frac{1}{4}$ 3.6 Ac.

N.E. $\frac{1}{4}$ OF S.W. $\frac{1}{4}$ 1.1 Ac.

12/7
13/18

Application No. 44697 & G-4453
Permit No. 33465