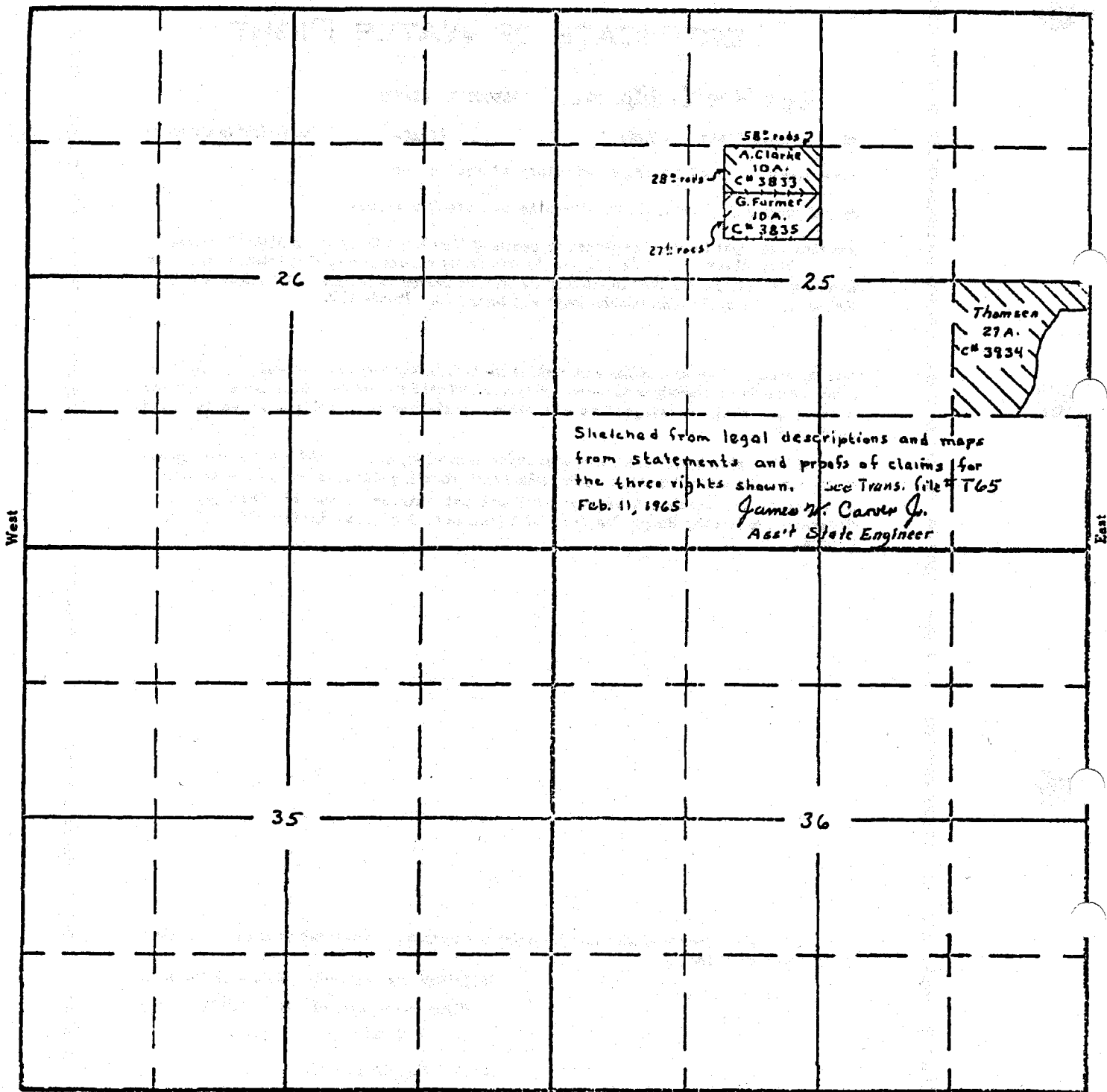


SECTION

TOWNSHIP 2 N , RANGE 10 E , W. M.

North



Sketched from legal descriptions and maps  
 from statements and proofs of claims for  
 the three rights shown. See Trans. file T65  
 Feb. 11, 1965  
*James W. Carver Jr.*  
 Ass't State Engineer

APPLICATION No.  
 PERMIT No.